



## **Building Design Authority (P) Ltd**

*in joint Venture with*

**B.N. Consultancy Pvt. Ltd and  
PLUSH Engineering & architects (P) Ltd Kathmandu.**

## **Monthly Progress Report**

**for**

**Secondary Towns Integrated Urban Environmental  
Improvement Project (STIUEIP), Biratnagar, Nepal**



**June 2018**

**Biratnagar Metropolitan City (BMC), Nepal**

## **Table of Contents**

---

<b>1. SALIENT FEATURE OF CONTRACT PACKAGE: STIUEIP/W/BRT/ICB-01 .....</b>	<b>1</b>
<b>2. INTRODUCTION / BACKGROUND .....</b>	<b>3</b>
<b>3. SUB PROJECT COMPONENTS .....</b>	<b>4</b>
<b>3.1. SEWER LINES .....</b>	<b>4</b>
<b>3.2. STORM WATER DRAIN .....</b>	<b>6</b>
<b>3.3. WASTE WATER TREATMENT PLANTS .....</b>	<b>9</b>
<b>3.4. ROADS AND LANES .....</b>	<b>12</b>
<b>3.5. ENVIRONMENTAL ASPECT .....</b>	<b>12</b>
<b>3.6. SOCIAL ASPECT .....</b>	<b>12</b>
<b>3.7. FINANCIAL PLAN .....</b>	<b>13</b>
<b>3.8. DISBURSEMENT RECORDS IN CONSTRUCTION .....</b>	<b>13</b>
<b>4. OBJECTIVES AND SCOPE OF WORKS .....</b>	<b>15</b>
<b>4.1. OBJECTIVES .....</b>	<b>15</b>
<b>4.2. SCOPE OF WORKS .....</b>	<b>15</b>
<b>5. PROGRESS OF SUB – PROJECT COMPONENTS .....</b>	<b>15</b>
<b>5.1. STORM WATER DRAINS .....</b>	<b>15</b>
<b>5.2. SEWER LINES .....</b>	<b>16</b>
<b>5.3. WASTE WATER TREATMENT PLANT .....</b>	<b>16</b>
<b>5.4. ROAD AND LANES IMPROVEMENT WORKS .....</b>	<b>17</b>
<b>5.5. CONSTRUCTION MATERIALS .....</b>	<b>17</b>
<b>5.6. CONSTRUCTION MATERIAL TESTING LAB .....</b>	<b>17</b>
<b>5.7. PHYSICAL PROGRESS TILL JUNE, 2018 .....</b>	<b>18</b>
<b>6. SUMMARY OF ACTIVITIES CARRIED OUT UP TO PREVIOUS MONTHS .....</b>	<b>23</b>
<b>6.1. ORGANIZATION AND STAFFING .....</b>	<b>23</b>
<b>6.2. INCEPTION REPORT .....</b>	<b>24</b>
<b>6.3. CONCEPTUAL CATCHMENT PLAN AND DESIGN CRITERIA .....</b>	<b>24</b>
<b>6.4. SURVEY .....</b>	<b>24</b>
<b>6.5. DESIGN .....</b>	<b>24</b>
<b>6.6. PRE – CONSTRUCTION ACTIVITY .....</b>	<b>24</b>
<b>6.7. DRAFT REPORT .....</b>	<b>24</b>
<b>6.8. FINAL REPORT .....</b>	<b>24</b>
<b>6.9. CONSULTANT’S ACTIVITIES IN CONSTRUCTION PHASE .....</b>	<b>25</b>
<b>6.10. KEY DATES .....</b>	<b>26</b>
<b>7. DETAILS OF ACTIVITIES CARRIED OUT IN THIS MONTH .....</b>	<b>26</b>
<b>7.1. PHYSICAL PROGRESS IN THIS MONTH .....</b>	<b>26</b>
<b>8. CONTRACTOR’S MANPOWER .....</b>	<b>43</b>



**9. CONTRACTOR’S EQUIPMENT..... 44**

**10. DETAILS OF SAFEGUARD ACTIVITIES (SOCIAL, ENVIRONMENTAL AND RESETTLEMENT ACTIVITIES AND ISSUES)..... 44**

**10.1. SOCIAL ISSUES ..... 44**

**11. KEY ISSUES AND REMARKS / REASON FOR DEVIATION (IF ANY) AFFECTING PROGRESS..... 47**

**12. WORK PLAN FOR THE NEXT MONTH ..... 47**



**List of Tables:**

Table 1: PROPOSED SEWER LINES in BMC.....	4
Table 2: PROPOSED STORM WATER DRAINS in BMC.....	6
Table 3: PROPOSED WASTE WATER COMPONENTS in BMC.....	9
Table 4: PROPOSED ROADS in BMC.....	12
Table 5: DISBURSEMENT RECORDS in CONSTRUCTION.....	13
Table 6: PLAN vs ACTUAL PROGRESS till June, 2018.....	18
Table 7: AGENCY-WISE FINANCIAL CONTRIBUTION to BMC.....	25
Table 8: KEY DATES of EVENTS / ACTIVITIES.....	26
Table 9: PHYSICAL PROGRESS in STORM WATER DRAINS till June, 2018.....	26
Table 10: PHYSICAL PROGRESS in ROAD SIDE DRAINS (till June, 2018).....	28
Table 11: PHYSICAL PROGRESS in SEWER LINES (till June, 2018).....	31
Table 12: PHYSICAL PROGRESS in MANHOLES, SEWER INLETS & HOUSE CONNECTION CHAMBER (till June, 2018).....	32
Table 13: PHYSICAL PROGRESS in ROADS & LANES (till June, 2018).....	32
Table 14: PHYSICAL PROGRESS in WASTE WATER TREATMENT PLANT (WWTP), JATUWA till June, 2018.....	40
Table 15: PHYSICAL PROGRESS in PRODUCTION OF PRECAST ITEMS at KATAHARI till June, 2018 .....	42
Table 16: PHYSICAL PROGRESS in PRODUCTION OF RCC PIPES at ITAHARI till June, 2018.....	42
Table 17: CONTRACTOR'S KEY STAFFS in June, 2018.....	43
Table 18: CONTRACTOR'S EQUIPMENT at JUDI CAMP.....	44



**List of Figures:**

Figure 1: PROPOSED SEWER LINES IN BMC .....	5
Figure 2: PROPOSED STORM WATER DRAINS IN BMC (Northern Drainage System) .....	7
Figure 3: PROPOSED STORM WATER DRAINS IN BMC (Southern Drainage System) .....	8
Figure 4: PROPOSED WASTE WATER TREATMENT PLANT at JATUWA in BMC .....	11
Figure 5: ORGANIZATION and STAFFING of STIUEIP, Biratnagar .....	23



**ANNEXES:**

**ANNEX-1:** Photographs of June, 2018

**ANNEX-2:** Minutes of Meeting & letters June, 2018

**ANNEX-3:** A Laboratory Test Results of June, 2018

**ANNEX-4:** Contractor's Progress Report for June, 2018



**1. SALIENT FEATURE OF CONTRACT PACKAGE: STIUEIP/W/BRT/ICB-01**

<b>General Features</b>	
Name of Project	Secondary Towns Integrated Urban Environmental Improvement Project(STIUEIP)
Executing Agency	Government of Nepal, Ministry of Urban Development Department of Urban Development and Building Construction (DUDBC)
Implementing Agency	Biratnagar Metropolitan City, Biratnagar
Funded By	Asian Development Bank & Government of Nepal
Package	Sewerage and Drainage Network, Wastewater Treatment Plant and Road and Lanes Improvement Sub Project
Contract No.	STIUEIP/W/BRT/ICB-01
Location	Biratnagar Metropolitan City, Biratnagar
Consultant	SMEC in association with Brisbane/AQUA/BDA/CEMAT March 2018 onwards Building Design Authority (P) Ltd <i>in joint Venture with</i> B.N. Consultancy Pvt. Ltd and PLUSH Engineering & architects (P) Ltd Kathmandu
Contractor	CTCE-KALIKA Joint Venture
Date of Commencement	08 December, 2013
Original Completion Date	26 May, 2016
Date of Completion as per EOT-04 (approved)	<b>31 March, 2018</b>
Revised date of completion as EOT-05 (proposed)	<b>30 June, 2018</b>
Revised Contract Amount including PS and VAT <i>w.r.t.</i> VO-04	<b>NRs. 2,956,290,542.71</b>
Recommended Amount ( <i>Up to IPC- 30</i> )	<b>NRs. 2,786,105,509.81 (including PS &amp; VAT)</b>
Physical Progress till <b>June</b> , 2018	<b>98.07% wrt VO-04</b>
Financial Progress	<b>94.24% (wrt VO-04 including VAT+PS+PA)</b>

The outstanding/remaining works and defect remedial works are also under progress. IPC – 30 is sent to concerned authorities to peruse and disburse.



**Physical progress of works: Components wise**

S.No.	Particulars	Unit	Quantity as per VO-4	Quantity completed till date	%age of work done till date	Quantity of remaining works	%age of work remained
1	Storm water drain	m	34,592.83	34,592.83	100.00	-	-
2	Road side drain	m	36,050.00	35,721.65	99.09	328.35	0.91
3	Sewer lines	m	43,668.50	43,638.55	99.93	29.95	0.07
3.a	HDPE sewer line	m	24,476.90	24,452.25	99.90	24.65	0.10
3.b	Hume pipe sewer line	m	19,191.60	19,186.30	99.97	5.30	0.03
4	Roads & Lanes	m	44,643.00	40,293.50	90.26	4,349.50	9.74
5	Waste Water Treatment Plant (WWTP): Overall	m	100.00	91.15	91.15	8.85	8.85
6	Sewer Manholes	Nos.	1,434.00	1,432.00	99.86	2.00	0.14
7	Sewer Inlets	Nos.	2,924.00	1,764.00	60.33	1,160.00	39.67
8	House connections	Nos.	4,500.00	1,279.00	28.42	3,221.00	71.58

Note: Remaining works in Road and Lanes are asphalt at WWTP and some lanes where the road side drains were not constructed thus sub base isn't laid.





## 2. INTRODUCTION / BACKGROUND

a) SMEC International Pty (Australia) in association with Brisbane City Enterprise Pty Ltd (Australia), AQUA Consultant and Associates Ltd (Bangladesh), Building Design Authority (Nepal) and CEMAT Consultants (Nepal) have entered for a Contract of Consulting Services with Secondary Towns Integrated Urban Environmental Improvement Project (STIUEIP), Project Implementation Unit (PIU), Biratnagar Sub Metropolitan City on 7<sup>th</sup> December 2011. This monthly Progress Report of **June, 2018** has been submitted to the PIU as per the Work Program proposed in the consultant's technical proposal as well as TOR of the consultant.

b) Secondary Towns Integrated Urban Environmental Improvement Project (STIUEIP), the Department of Urban Development and Building Construction (DUDBC), under the Ministry of Urban Development (MUD) through the Government of Nepal (GoN) has received the loan from Asian Development Bank (ADB) Loan 2650-NEP. As per PAM contribution from GoN is 3.99 million USD, Asian Development Bank (ADB) 18.86 million USD and Biratnagar Sub-Metropolitan City (BSMC) 1.99 million USD while contingency is 2.88 million USD for Secondary Towns Integrated Urban Environmental Improvement Project (STIUEIP), Biratnagar. The cost sharing has been revised in April, 2013 as: Government of Nepal (GoN) is 5.960 Million USD, Asian Development Bank (ADB) 24.214 Million USD, TDF loan 4.098 Million USD and Biratnagar Sub-Metropolitan City (BSMC) 2.980 Million USD and in total 37.252 Million USD.

c) In line with ADB's Strategy 2020 and based on Nepal's fundamental long term needs and on the GoN's priority, the ADB is continuing to support the Government in (i) improving urban infrastructure; improving access to water supply and sanitation (ii) supporting urban environmental improvement (iii) strengthening the operation and management skills of local governments. The proposed project Secondary Towns Integrated Urban Environmental Improvement Project (STIUEIP) is another step forward to promote healthy cities by creating healthier urban environments and was formulated under the PPTA 2010.

- Contract of consulting services signed on 07 December 2011.
- Design works commenced on 01 January 2012.
- Final design works submitted to the Client on March 2013
- Contract of construction works signed on 02 December 2013
- Construction works commenced on 08 December 2013
- The revised work Programme -3 with S-curve and Resource plan is submitted by the Contractor along with EOT-2.
- After approval of EOT-3 as of 30 November, 2017, Contractor has submitted the draft revised work Programme without S-curve and resource plan.
- EOT-04 is approved till 31 March, 2018.
- Taking over certificate has been issued on 6<sup>th</sup> Feb 2018 according to **clause 10.1, 10.2 and 17.2** of the FIDIC Conditions of Contract for completed sections/works except Waste Water Treatment Plant (WWTP), Dedicated electricity line for WWTP, Jatuwa, R6 (Sahi Marg), R3 (Dharambandh road) and R4 (Jatuwa Marg) and DLP will start except above works on 6 Feb 2018 and will be completed on 5 Feb 2019 except Waste Water Treatment Plant (WWTP), Dedicated electricity line for WWTP, Jatuwa, R6 (Sahi Marg), R3 (Dharambandh road) and R4 (Jatuwa Marg) as decided in the meetings of dated 22 Nov 2017 and 02 Jan 2018. On request from the contractor to finish the above remaining works will take about three months more thus the EOT No.: -05 is approved till 30<sup>th</sup> June 2018.
- It is decided and agreed by the employer to supervise the STIUEIP, Biratnagar by the of RUDP, Biratnagar from 1st March, 2018 till the completion of the project including DLP and Operation and Maintenance.



### 3. SUB PROJECT COMPONENTS

#### 3.1. SEWER LINES

d) The prioritized sewer lines for Final Detailed Engineering Report of BMC are as follows:

*Table 1: PROPOSED SEWER LINES in BMC*

S. NO.	Description	Unit	Original Quantity	Revised Quantity as per VO-3
<b>1</b>	<b>Sewerage Pipe Supply and Installation</b>	m	<b>63,964.00</b>	<b>43,668.50</b>
	<b>Reinforced Concrete Pipe laying and jointing</b>		<b>16,612.00</b>	<b>19,191.60</b>
	Line T1 (Secondary)	m	3,788.00	5,026.80
	Line T2 (Trunk)	m	8,370.00	9,488.00
	Line T3 (Trunk)	m	4,136.00	4,493.30
	Line T4 (Secondary)	m	318.00	183.50
	<b>HDPE laying and jointing</b>	m	<b>47,352.00</b>	<b>24,476.90</b>
	Line T1 (Secondary)	m	7,124.00	3,817.10
	Line T2 (Trunk)	m	19,410.00	13,595.40
	Line T3 (Trunk)	m	18,606.00	6,947.10
	Line T4 (Secondary)	m	2,212.00	117.30
<b>2</b>	<b>Manhole ( Brick / RCC)</b>	<b>no.</b>	<b>2,036.00</b>	<b>1,434.00</b>
<b>3</b>	<b>Sewer Inlet</b>	<b>no.</b>	<b>3,766.00</b>	<b>2,924.00</b>
<b>4</b>	<b>House Connection</b>	<b>no.</b>	<b>5,930.00</b>	<b>4,500.00</b>
<b>5</b>	<b>Reinstatement of Roads</b>	<b>Km</b>	<b>66.06</b>	<b>44.683</b>



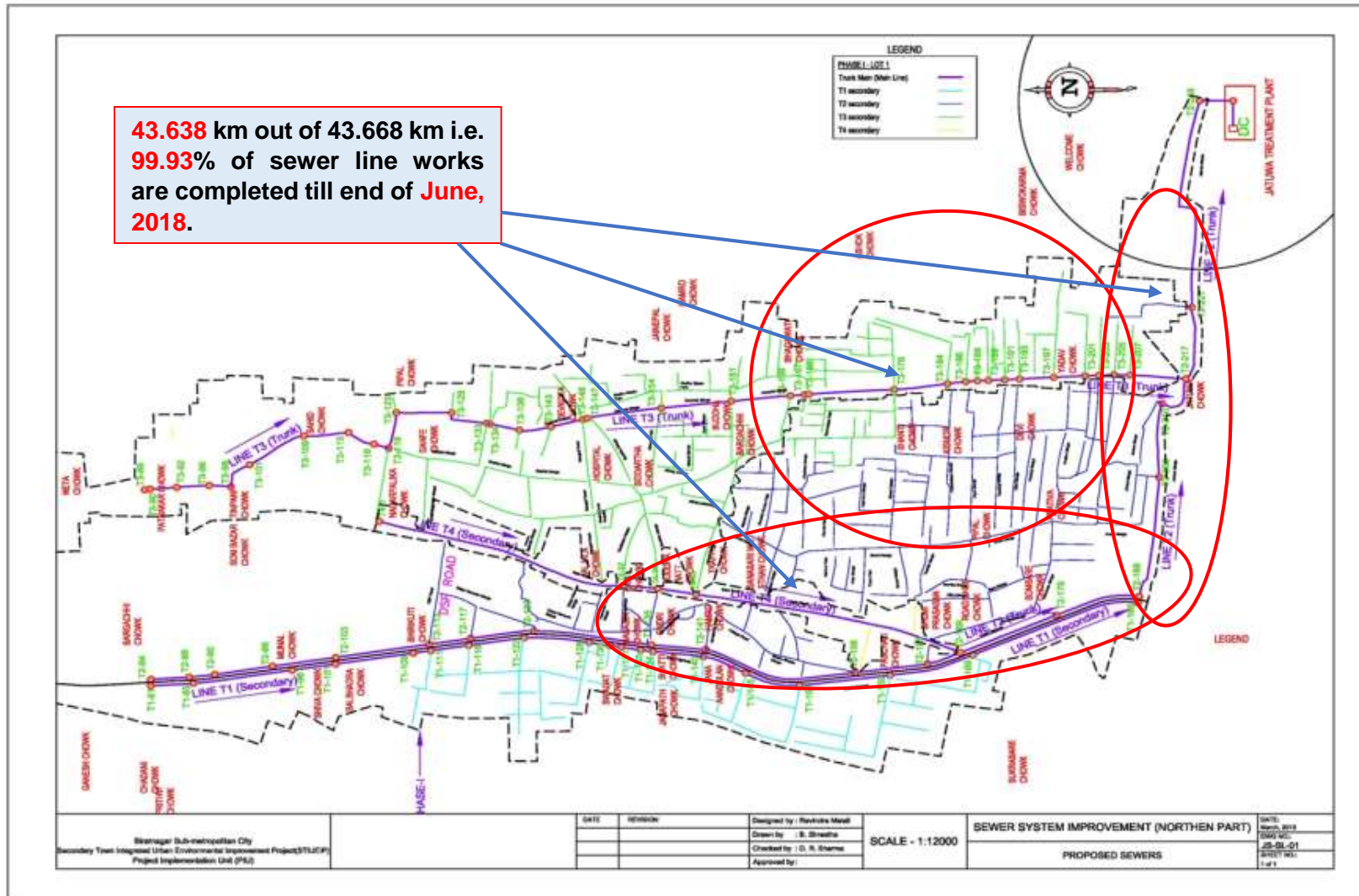


Figure 1: PROPOSED SEWER LINES IN BMC



### 3.2.STORM WATER DRAIN

e) Most of the storm drains (S13, S11, S9, S5, B1, B2, B3, CN2, CN3 and southern parts) have been provisioned as Phase I priority works. The major storm drain outlets as planned are 14 numbers and catchment areas and discharges are respectively 1,324.2 Ha and 73.21 cum/sec.

*Table 2: PROPOSED STORM WATER DRAINS in BMC*

S.No.	Description	Unit	Original Quantity	Revised Quantity as per VO-3
<b>A</b>	<b>Storm Drain for Northern Parts</b>		<b>28,491.00</b>	<b>27,678.00</b>
I	Storm Drain Lines	m	28,491.00	
II	Culvert	No.	41.00	
III	Outfall	No.	15.00	
IV	Rain Inlet	No.	30.00	
V	Manhole	No.	30.00	
VI	Canal Crossing	No.	11.00	
<b>B</b>	<b>Storm Drain for Southern Part</b>			
I	Brick Masonry Drain	m	<b>8,483.00</b>	<b>6,487.00</b>
II	Cleaning and Maintenance of Existing Drain	m	7,273.00	
III	Culverts	No.	38.00	
<b>C</b>	<b>Rehabilitation of Existing Drain</b>			
I	Drain Cover	m	30,467.00	
II	Cleaning and Maintenance of Existing Drain	m	33,601.00	





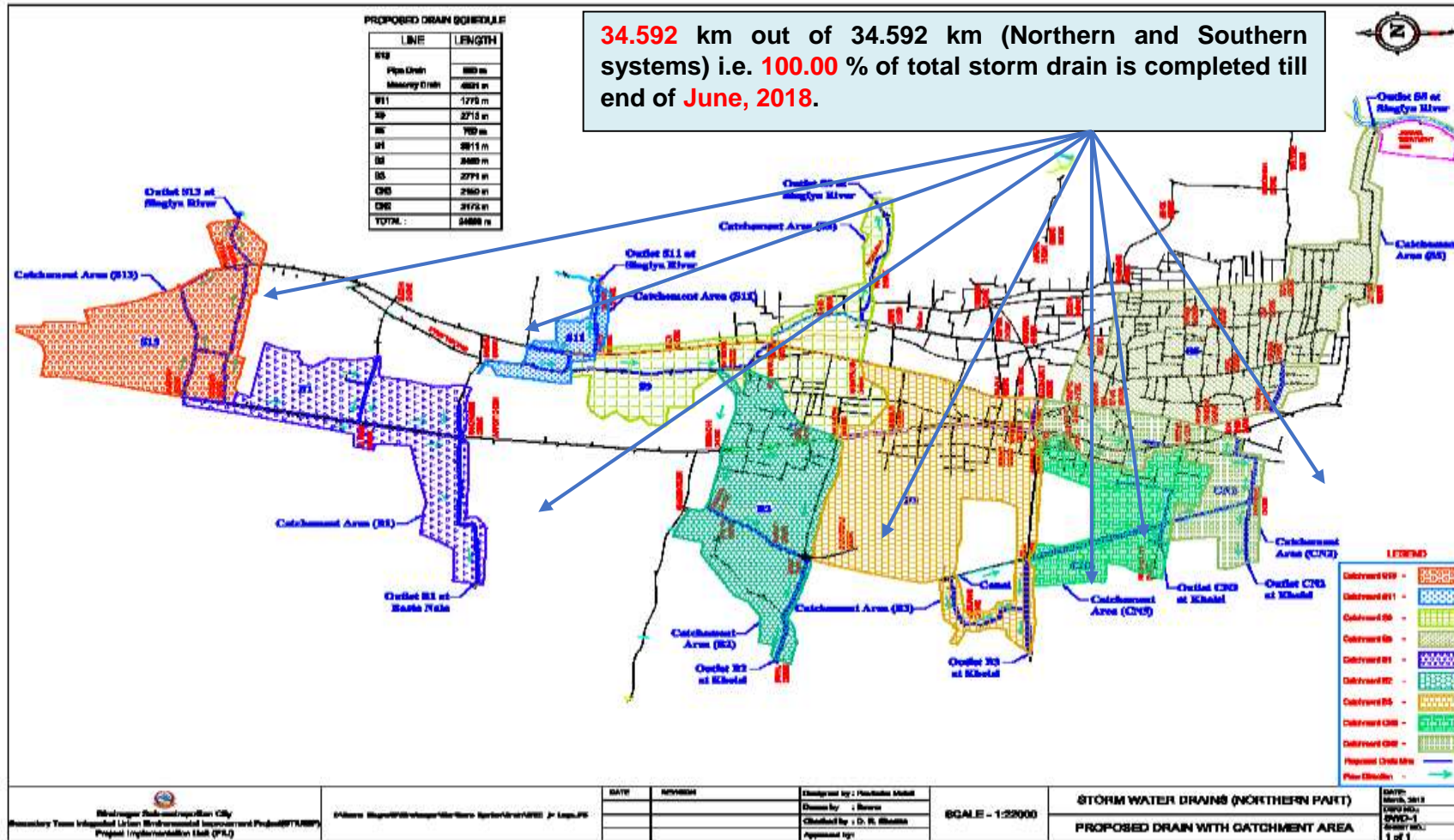


Figure 2: PROPOSED STORM WATER DRAINS IN BMC (Northern Drainage System)



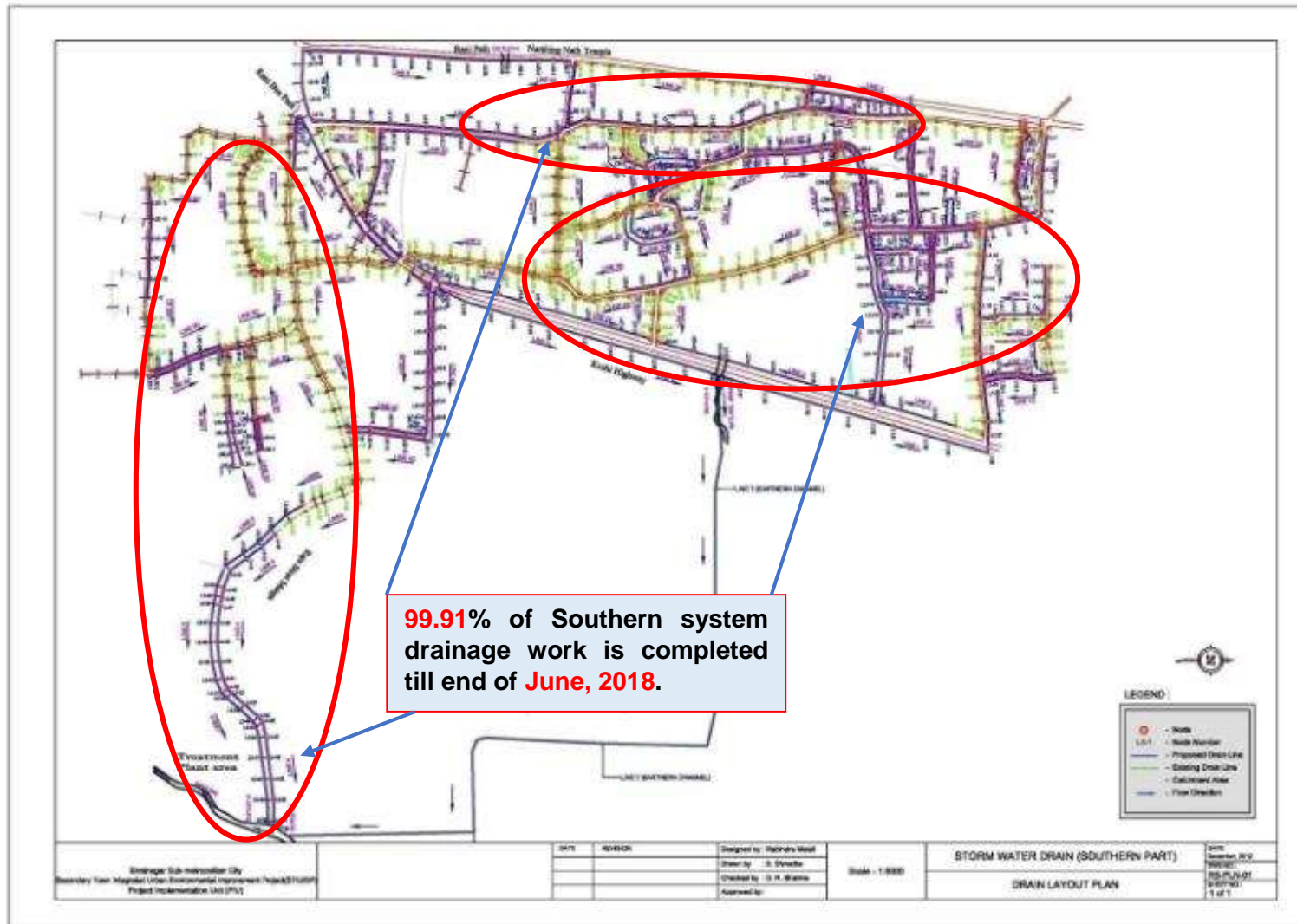


Figure 3: PROPOSED STORM WATER DRAINS IN BMC (Southern Drainage System)



### 3.3.WASTE WATER TREATMENT PLANTS

f) The quantity of domestic waste water is calculated using water supply rate at 90 liters per person per day in the design year 2035, out of which 80% is converted into waste water. Maximum quantity of waste water is calculated taking peak factor of 1.99 to 2.5. Minimum quantity of sewage is taken as 30% of the average quantity. Commercial / Institutional / Industrial waste water quantity is calculated as 0.10 LPS/ha. While infiltration quantity is calculated as 0.14 LPS/ha in the design year 2035. The total quantity of commercial / institutional / industrial and infiltration waste water estimated as 237.79 LPS in the design year 2035 which is very large in comparison with domestic waste water quantity of 207.18 LPS. The maximum quantity (peak flow) of waste water in the design year 2035 for both Phase I and Phase II are as is estimated at 650.08 LPS. The maximum quantity of the waste water for Phase I is estimated as 213.97 LPS only. The capacity of the Phase I WWTP has been adopted as 214 LPS. The capacity of the Phase II WWTP will be thus 436 LPS. Features of WWTP at Jatuwa are as follows:

**Table 3: PROPOSED WASTE WATER COMPONENTS in BMC**

S. No.	Description	Unit	Nos.
	<b>Waste Water Treatment Plant Components</b>		
1	By Pass Chamber	No	1
2	Distribution Chamber	No	1
3	Bar Screen Chamber	No	2
4	Sump well with Pumping Station	No	2
5	Collection Chamber1	No	1
6	Oil &Grease Chamber	No	2
7	CollectionChamber2	No	1
8	Grit Chamber	No	2
9	CollectionChamber3	No	1
10	Anaerobic Pond	No	3
11	Facultative Pond	No	3
12	Collection Chamber4	No	1
13	Outfall Structure	No	1
14	Sludge Drying Bed	No	10
15	Enclosure Chamber Shed	No	1
16	Guard House	No	1
17	Office Cum Lab Building	No	1
18	Workshop Building	No	1
19	Generator/Changing House	No	1
20	Entrance Gate	No	1
21	Boundary wall	m	1,340
22	Shallow Tube Well with water Tank	set	1
23	Landscaping and Plantation works	Sq.m.	99,915



24	Site clearance, grubbing, surface dressing	Sq.m.	99,915
25	Road construction	m	1,440
26	Road side drain construction	m	2880
26	River training works	m	600
27	Electromechanical works	Set	1
28	Lab Equipment and installation	Set	1





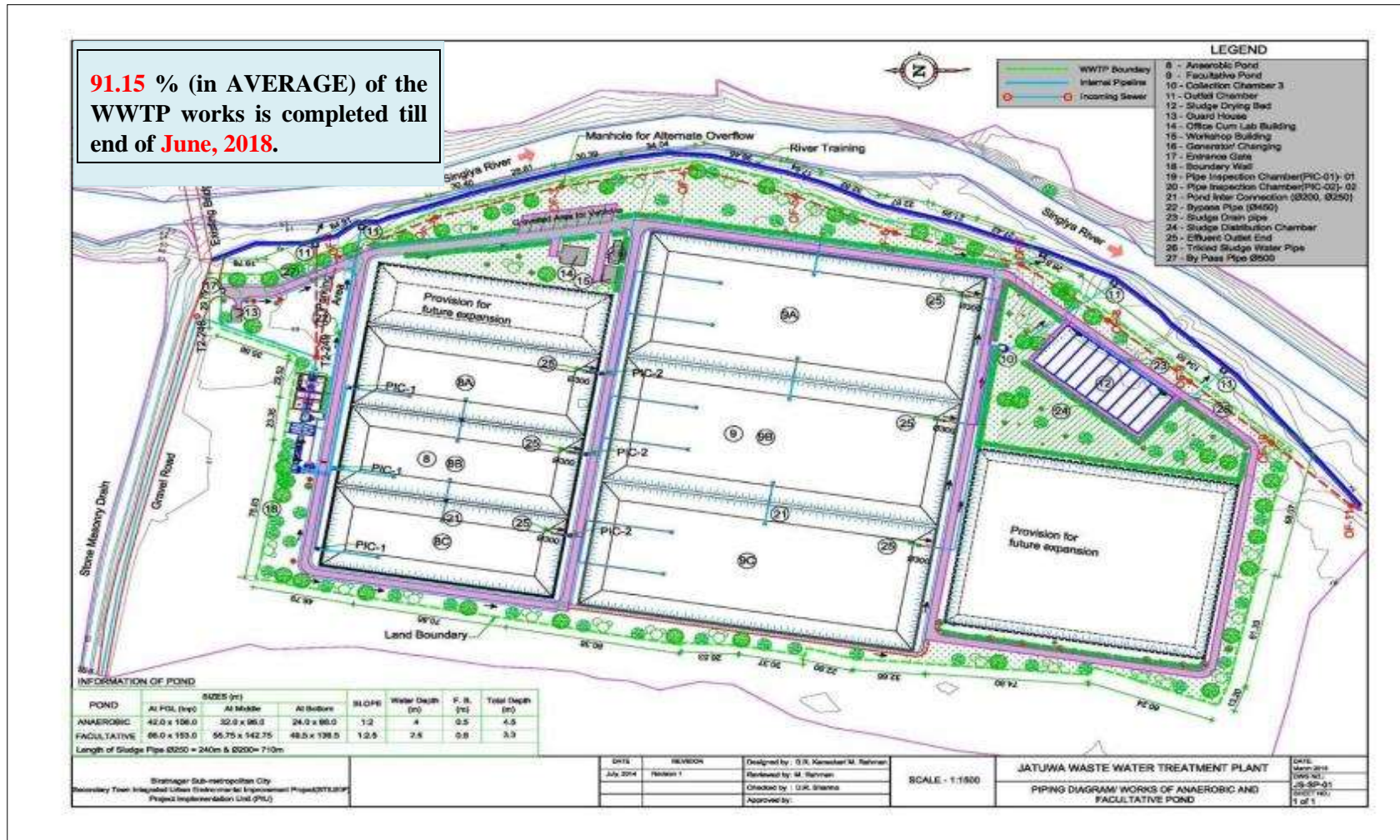


Figure 4: PROPOSED WASTE WATER TREATMENT PLANT at JATUIWA in BMC



### 3.4.ROADS AND LANES

g) Most of the roads/lanes in Biratnagar are in a poor state due to lack of periodic maintenance, and need improvement, where as some of the roads are graveled and would benefit from upgrading. In the areas where drainage and sewerage works are proposed there will be significant impact on the existing roads. The 3.224 Km road improvement with Asphalt from Pushpalal Chowk to Pani Tanki Chowk is completed where as in other roads 37.069 Km Sub-grade and Sub-base is completed till this month and hence the Project has considered on design based on reinstatement, rehabilitation and upgrading of existing roads and lanes.

**Table 4: PROPOSED ROADS in BMC**

Description of Item	Quantity
Main Road Improvements (Road from Pushpalal Chowk to Pani Tanki)	3.224 Km
Reinstatement and Road Improvements (under Sewer line installation) and WWTP	41.358 Km

### 3.5.ENVIRONMENTAL ASPECT

h) The project is environmental improvement project and mainly constitutes works on sewerage and drainage improvement works in BMC besides others. As per ADB guide lines on Environmental Assessment requirements, this project is classified as Environment Category B. According to Environmental Protection Guidelines, 2054 BS, First Revised (2055 BS) schedule-3, IEE is required for Operations of Sewerage Schemes under Schedule 1.h.2.e (pertaining to Rule3). The final report on IEE was submitted and MoUD

i) had approved the IEE on May14, 2013.

j) Installation of functioning sewers and functioning drainage system including roads/lanes improvement in BSMC does not possess any adverse environmental impacts to its surrounding. In fact, these will greatly enhance the living conditions/hygiene of the inhabitants and facilitate transportation. Nevertheless, it is imperative to look into positive as well as negative impacts of such infrastructure development works in the urban area.

k) DSC has prepared and submitted Environmental Progress Reports (Semi-Annual) October 2014 – March 2015 and Quarterly Updated Environmental Report, January – March on 27 May 2015. Recently, the DSC has received comments from PCO to revise semi-annual environmental report. The next Quarterly Updated Environmental Report for the months of April, May and June 2016 and semi – annual report has been submitted in July, 2016. The Updated Environmental Annual Report for the months of January 2017 to June 2017 and July 2017 to December 2017 has been submitted in Dec, 2017.

### 3.6.SOCIAL ASPECT

l) Secondary Towns Integrated Urban Environmental Improvement Project (STIUEIP) in Biratnagar has commenced from 2010 to improve the quality of life and help to achieve higher and more socially inclusive economic growth of people through effective, efficient, and reliable delivery of improved and affordable municipal services. Infrastructure development of drainage



and sewerage system as well as roads and lane improvement are the major components of STIUEIP in Biratnagar Metropolitan City (BMC). Besides this, community development and institutional strengthening components, the two other objective focused components of STIUEIP Biratnagar are running various social development programs and activities.

Social development component is one of the major components of STIUEIP Biratnagar that comprises of various social development programs and activities like community development program (CDP), awareness raising, skill development, health and sanitation. Social Development Specialist (SDS) in Design and Supervision Consultant (DSC) is deputed to assist the Project Implementation Unit (PIU) in implementing effectively the social activities to achieve the project goal as envisaged by the project. Monitoring of ongoing social development activities and consultation meetings with community people are the general tasks to be accomplished as regular basis.

Establishment and functioning of Social Safeguard Desk in PIU is a major milestone of social development aspect which has been effective to address all social/ community development issues and concerns with active initiation of the DSC.

Based on the poverty indicators, all details have been documented and shown in the social map. The program area for community development programs has been extended to most poverty stricken area scattered across several wards of the BSMC. The Community Development Program includes meetings, orientation, awareness activities, skill development trainings and health, hygiene and sanitation activities which are conducted and organized by the NGO (Fri PAD).

The updated Semi- Annual Report for the period of January 2017 to June 2017 and July 2017 to December 2017 has been submitted in **Dec, 2017**.

### 3.7.FINANCIAL PLAN

m) The Sub-project cost will be disbursed in three years starting from FY2013/14 to 2015/16. It has estimated that 20 percent of the Sub-project cost will be disbursed in first year. Similarly, in second year, 50 percent will be disbursed. Finally, remaining 30 percent of Sub-project cost will be disbursed in third year. Actual disbursement in the first fiscal year was 4.3 % (up to July 2014); 34.3% (up to July 2015 inclusive VO1) in second fiscal year was 56.72% so total was 88.53% (up to August, 2017). Hence the remaining disbursement 11.47 % will be done in fourth year.

### 3.8.DISBURSEMENT RECORDS IN CONSTRUCTION

*Table 5: DISBURSEMENT RECORDS in CONSTRUCTION*

S. No.	Description of Payment	Total Bill Amount with VAT & PS	Remark
1	IPC 01		
2	IPC 02	29,553,479.92	
3	IPC 03	50,406,775.75	
4	IPC 04	44,819,505.68	
5	IPC 05	23,380,168.96	



S. No.	Description of Payment	Total Bill Amount with VAT & PS	Remark
6	IPC 06	90,796,339.68	
7	IPC 07	80,854,600.52	
8	IPC-08	122,334,488.86	
9	IPC-09	116,092,187.14	
10	IPC-10	132,327,417.89	
11	IPC-11	169,853,829.07	
12	IPC-12	23,121,515.46	
13	IPC-13	85,563,926.44	
14	IPC-14	163,562,505.71	
15	IPC-15	139,008,112.96	
16	IPC- 16	137,640,413.95	
17	IPC-17	135,118,714.02	
18	IPC-18	39,288,088.98	
19	IPC-19	76,081,596.87	
20	IPC-20	74,522,638.96	
21	IPC-21	152,577,081.94	
22	IPC-22	140,477,295.40	
23	IPC-23	66,139,814.38	
24	IPC-24	110,913,194.49	
25	IPC – 25	169,428,867.45	
26	IPC-26	129,978,851.94	
27	IPC-27	65,357,880.77	
28	IPC-28	84,960,602.31	
29	IPC-29	131,945,614.31	
30	IPC-30	199,717,420.90	
	Grand Total =	<b>2,985,822,930.71</b>	
	Total payment to date including PS, PA & VAT and excluding mobilization =	<b>2,985,822,930.71</b>	
	Total payment to date including PS & VAT and excluding mobilization and PA =	<b>2,779,191,341.00</b>	<b>Total PA amount with VAT = 206,555,373.18</b>



## 4. OBJECTIVES AND SCOPE OF WORKS

### 4.1.OBJECTIVES

n) The following are the expected physical infrastructure improvement outputs of the project in Biratnagar Metropolitan City:

- Drainage and sewerage systems improvement.
- Urban roads and lanes improvement.

o) Reference to the deliverables identified in the Project, indicates that there are a number of deliverables related specifically to the design aspects of the above infrastructure improvements with construction works.

### 4.2.SCOPE OF WORKS

p) The scope of works for consultant's services is fairly detailed in the TOR attached with contract Agreement. The main points are summarized below:

- A. Detailed Design and Procurement Assistance Phase
  1. Surveys verification of Feasibility Studies and GIS Base Maps
  2. Finalization of Design Criteria, Preparation of Manuals, Guidelines and Systems.
  3. Specific design requirements for the sub-projects
    - Improvement and development of drainage and sewerage systems
    - Improvement of urban roads and lanes
  4. Project Planning and Management Support to PIU
  5. Detailed Engineering Design
- B. Construction and Post Construction Management Phase
  1. Construction Management and Contract Administration
  2. Environmental and Social Compliance Monitoring
  3. Implementation of Community Development Program, Community Mobilization and GESI Action Plan
  4. Capacity Building of the Municipality and Service Providers for Operational Sustainability
- C. Communications, Reporting and Deliverables (Inception Report, Monthly Progress Reports, Interim Report for each of the outputs, Annual Progress Report, Draft Final Report for each of the outputs and Final Report).

## 5. PROGRESS OF SUB – PROJECT COMPONENTS

### 5.1.STORM WATER DRAINS

q) The Contractor has resumed the works from mid-December 2015 in difficult situation due to Madhesh Strikes and partial fuel supply. But, again they have started the works of Storm drains at S9, CN3L1A, B2, S11 and A1, which are completed.





The contractor has completed storm water drain about 34.592 km out of 34.592 km, 100% till June, 2018.

## 5.2.SEWER LINES

r) The Contractor has resumed the sewer works from mid-December 2015 in difficult situation due to Madhesh Strikes and partial fuel supply. No work in this month due to rain. Almost, all sewer lines have been disturbed by high flood occurred on 12<sup>th</sup> August, 2017. The settled portion of R3 lane has been rectified and the cleansing work of sewer manholes and placement of Sewer inlets & House connection chamber are going on.

The Contractor has completed sewer lines with HDPE and RCC pipes about 43.638 km out of 43.668 km which is 99.93%, till June, 2018.

The proposal of the precast concrete manholes, sewer inlets and house connection chambers had been submitted for review and approval. Approval in consultation with the Employer has been given to the Contractor to execute at site because the proposal comes out to be economical, time effective and environmental friendly and structurally strong enough to carry out the function of their respective items.

The precast concrete house connection chambers, sewer inlets and manholes were installed at sites and found to be effective and we were able to open traffic at the shortest possible time. Especially where the business center with crowds (in R5 and R65 Roads) were very efficient and effective. This has reduced disturbances to the local people and road users, dumping of construction materials, workers and working for long period. This is found to be environment friendly too. Hence, the adaptation of precast units for sewer lines found to be effective and efficient.

During the site visit of delegate at different time in the construction period from BSMC, PMSC, ADB, PCO, local political representatives, TLO, Executive Director of TDF and the Secretary of Ministry of Urban Development have commended.

The payment for the respective item of works as appropriate is being paid under each IPCs for the cash flow and to account disbursement in ADB's disbursement book.

## 5.3.WASTE WATER TREATMENT PLANT

s) Office cum laboratory building, workshop building and generator / changing house at WWTP, Jatuwa are almost completed. The Contractor has been continued all activities of WWTP.

Now the Contractor is carrying out Sump well, remaining boundary wall at WWTP from mid-December 2016. Structure work in Sump well has been revised as per site condition and work started as per revised drawing. Rip Rap stone masonry for Anaerobic & Facultative Ponds and Bio-engineering works are in progress. Pipe system, sand & gravel packing is in progress for sludge drying bed. And the average progress of WWTP is recorded as 91.15%. High flood occurred on 12<sup>th</sup> August, 2017 by which, there were damage of compound wall, drains, gravel roads, Sump well, stone rip-rap and also sludge drying bed works at WWTP. The civil works of sump well, enclosure chamber, oil & grease chamber and grit chamber work are completed. Lab equipment has been purchased and the dedicated feeder electricity line is in progress (civil works completed and most of the accessories are purchased).



#### **5.4.ROAD AND LANES IMPROVEMENT WORKS**

t) The Contractor has completed the rehabilitation / repair of existing drain of about 6.6 km in R2 road. The Contractor has completed the shifting/ relocating electric poles up to Pani Tanki both sides.

The Contractor has been completed sub-grade preparation, sub-base, base course, prime and Tack coat and asphalt concrete in R2 road up to Pani Tanki Chowk. Road works have been frequently disturbed due to the existing water supply network and house connection pipes. The Contractor has completed road works with Sub Base along the sewer lines about 40.293 km out of 44.643 km, 90.26% till June, 2018.

#### **5.5.CONSTRUCTION MATERIALS**

u) The fabrication of steel moulds for precast units- manholes, sewer inlets and house connection chamber are continuing in this month also. Similarly, other item of works inside the Contractor's yard is also going on smoothly.

The Contractor has resumed to produce the precast items (drain cover slabs) at the Contractor's Camp, Katahari from end of October 2017.

#### **5.6.CONSTRUCTION MATERIAL TESTING LAB**

v) Construction material testing laboratory has been set up at the Contractor's camp at Katahari. Cube Test, Brick Compressive Strength, Cement Test is conducted in the Laboratory. Besides these tests, Aggregate Crushing Value (ACV), Flakiness Index (FI), Los Angeles Abrasion (LAA), CBR tests are also conducted.

As regular, Three Edge Bearing Test for RCC pipes of different diameter has been conducted on 20 January 2016 at Itahari in presence of Consultant (TL, CSE) and PM/PIU. And results were found satisfactory.

Now, construction material testing lab is working in full swing for testing of sub grade material, sub base material, base material, Bituminous items, concrete, brick, sand and aggregates.



**5.7. PHYSICAL PROGRESS TILL JUNE, 2018**

w) Total physical progress till **June, 2018** is about **98.07% w.r.t vo-4**.

*Table 6: PLAN vs ACTUAL PROGRESS till June, 2018*

Secondary Towns Integrated Urban Environmental Improvement Project (STIUEIP), Biratnagar																
Plan Vs. Progress																
Month	Sep-14	Oct-14	Nov-14	Dec-14	Jan-15	Feb-15	Mar-15	Apr-15	May-15	Jun-15	Jul-15	Aug-15	Sep-15	Oct-15	Nov-15	Dec-15
Cumulative Planned work Rev 01 (%)	17.098	18.514	26.588	36.398	46.281	56.947	67.003	76.728	86.593	94.037	95.75	95.99	96.16	96.3	96.45	96.59
Cumulative Planned work Rev 02 (%)				14.04	20.11	28.74	37.22	44.94	51.60	57.295	59.33	60.92	60.99	61.07	64.65	71.29
Cumulative Planned work Rev 03 (%)													41.847	45.447	47.767	58.037
Cumulative Actual Achievements (%)	5.81	5.98	9.29	10.77	12.57	17.57	21.82	25.25	27.85	34.317	34.317	34.317	34.317	34.317	34.317	34.94
Progress lagging to date wrt the revised work plan rev 03 (%)		(12.53)	(17.30)	(3.27)	(7.54)	(11.17)	(15.40)	(19.69)	(23.75)	(22.98)	(22.98)	(22.98)	(7.53)	(11.13)	(13.45)	(23.09)





Secondary Towns Integrated Urban Environmental Improvement Project (STIUEIP), Biratnagar

Plan Vs. Progress

Month	Jan-16	Feb-16	Mar-16	Apr-16	May-16	June-16	July-16	Aug-16	Sep-16	Oct-16	Nov-16	Dec-16	Jan-17	Feb-17	Mar-17
Cumulative Planned work Rev 01 (%)	96.74	97.38	97.18												
Cumulative Planned work Rev 02 (%)	79.29	88.71	96.41												
Cumulative Planned work Rev 03 (%)	69.51	80.67	91.46	97.82	100.00										74.83
Cumulative Actual Achievements (%)	35.64	38.97	42.57	51.07	54.30	59.10	60.10	60.16	60.22	61.22	64.82	69.78/63.12	74.19/67.53	71.44 (wrt Vo-03)	74.19
Progress lagging to date wrt the revised work plan rev 03 (%)	(33.87)	(41.70)	48.89	46.75	45.70										(0.64)

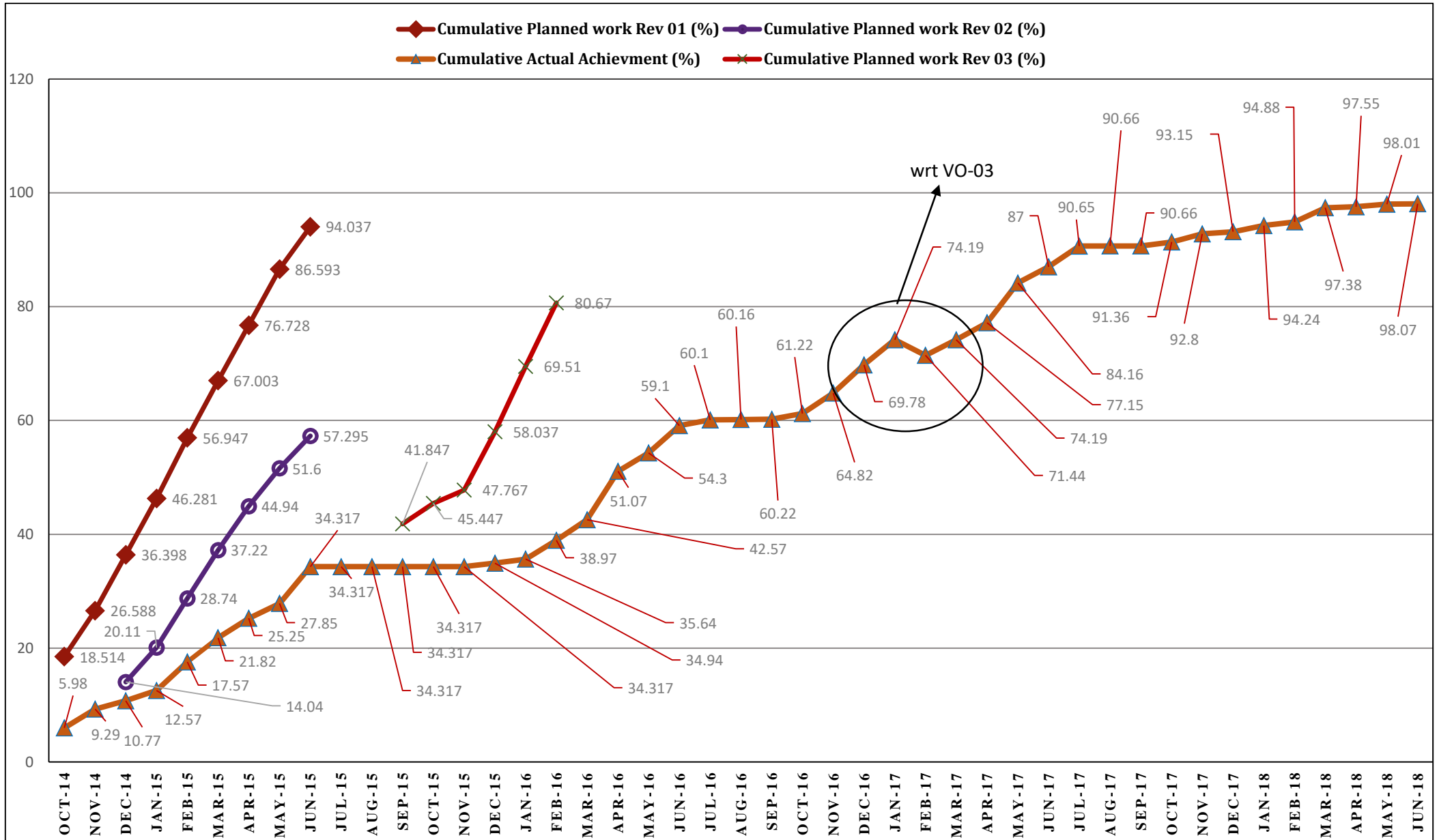


Secondary Towns Integrated Urban Environmental Improvement Project (STIUEIP), Biratnagar Plan Vs. Progress														
Month		Apr-17	May-17	June-17	July-17	Aug-17	Sept-17	Oct-17	Nov-17	Dec-17	Jan-18	Feb-18	Mar-18	Remarks
Cumulative Planned work Rev 01 (%)														
Cumulative Planned work Rev 02 (%)														
Cumulative Planned work Rev 03 (%)		83.39	93.05	99.62	100.00									
Cumulative Actual Achievements (%)		77.15	84.16	87.00	90.65	90.66	90.66	91.36	92.80	93.15	94.24	94.88	97.38	VO-04 has been submitted to the concerned authorities for approval
Progress lagging to date wrt the revised work plan rev 03 (%)		(6.24)	(8.89)	(12.62)	(9.35)	(9.34)	(9.34)	(8.64)	(7.20)	(6.15)	(5.76)	(5.12)	(2.62)	



Secondary Towns Integrated Urban Environmental Improvement Project (STIUEIP), Biratnagar Plan Vs. Progress														
Month		Apr-18	May-18	June-18	July-18	Aug-18	Sept-18	Oct-18	Nov-18	Dec-18	Jan-19	Feb-19	Mar-19	Remarks
Cumulative Planned work Rev 01 (%)														
Cumulative Planned work Rev 02 (%)														
Cumulative Planned work Rev 03 (%)														
Cumulative Actual Achievements (%)		97.55	98.01	98.07										
Progress lagging to date wrt the revised work plan rev 03 (%)		(2.45)	(1.99)	(1.93)										





## 6. SUMMARY OF ACTIVITIES CARRIED OUT UP TO PREVIOUS MONTHS

### 6.1. ORGANIZATION AND STAFFING

The Project has involvement of different organization and the staffing as shown below.

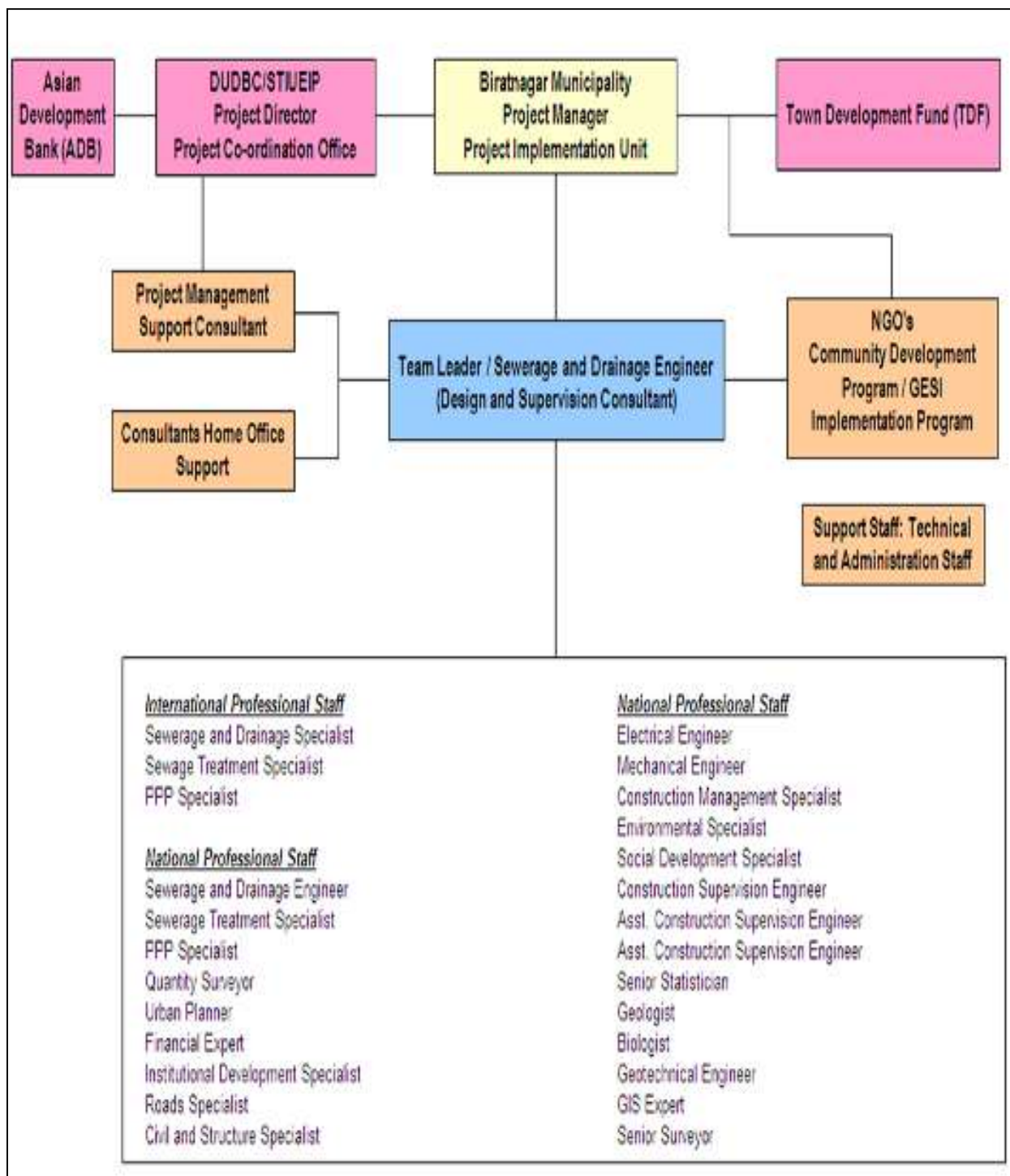


Figure 5: ORGANIZATION and STAFFING of STIUEIP, Biratnagar



## 6.2. INCEPTION REPORT

x) The Inception Report was prepared and submitted on 29 February, 2012.

## 6.3. CONCEPTUAL CATCHMENT PLAN AND DESIGN CRITERIA

y) The Conceptual Catchment Plan and Design Criteria was prepared and presented in PCO on 30 March, 2012.

## 6.4. SURVEY

z) The survey was completed in August, 2012.

## 6.5. DESIGN

aa) The design of sewer lines, storm drains, WWTPs and appurtenances and final detailed design and estimates were submitted in March 2013.

bb) During construction B2, B3 and S5 alternate design was also submitted. Similarly, CN2 and CN3 were submitted as the community request to reduce the size. The size was reviewed with 1 year return period as per the suggestion made by PMSC during field visit. Minor modifications in drawings are being carried out for considering the site condition and progress.

## 6.6. PRE – CONSTRUCTION ACTIVITY

cc) After successful completion of one stage two envelope bidding procedure the construction contract for STIUEIP/W/BRT/ICB-01 was signed on December 2, 2013 with M/S CTCE-Kalika JV, Baluwatar, Kathmandu.

## 6.7. DRAFT REPORT

dd) The construction / contract timing schedule was needed to incorporate some additional time of about 4 - 5 months to account for decision re-making process, tender award procedures.

ee) The total cost as per PPTA and earlier designs increased drastically and came to be **NRs. 7,274,465,206.69** and therefore needs curtailments and revisions had to be made as per suggestions by PIU in final report.

ff) The overall works proposed in the PPTA and the area coverage with connection was thus needed to be phased out.

## 6.8. FINAL REPORT

gg) The DSC submitted the Final Reports adopting cost reduction exercise by phasing out of the works. The estimated cost of the Project was reduced and kept as **NRs. 3,278,140,000.00** with a



lot of exercises in March 2013.

hh) The sharing of cost by concerned institutions is as follows

**Table 7: AGENCY-WISE FINANCIAL CONTRIBUTION to BMC**

Contributors	Amount(US\$)	Amount (NRs.)	%
Government of Nepal (GoN)	5,960,256.00	524,502,513.00	16.00%
Asian Development Bank (ADB)	24,213,539.00	2,130,791,460.00	65.00%
Biratnagar Sub-Metropolitan City (BSMC)	2,980,128.00	262,251,257.00	8.00%
Town Development Fund (TDF)	4,097,676.00	360,595,478.00	11.00%

## 6.9. CONSULTANT'S ACTIVITIES IN CONSTRUCTION PHASE

**Note: March 2018 onwards, DSC's team of RUDP will take care of STIUEIP, Biratnagar.**

ii) The consultant has been constantly supervising the contractor's work in daily basis. The consultant is mainly focusing in construction management, contract administration and the following activities but not limited as listed below:

- i. Daily Construction supervision
- ii. Quality control, cost control and time control
- iii. Measurement and Certification of Interim Payment Certificates (IPC)
- iv. Modification and design of storm drainage and sewer lines, manholes etc. as per site condition and approve working drawings
- v. Supervise construction material testing and sampling
- vi. Monitor Environment Management Plan and its compliance
- vii. Monitor Social safeguard and Resettlement Plan and its compliance
- viii. Meet obligation of reporting requirement – Updated Environmental Progress Report, Updated Resettlement Progress Report, Monthly Progress Report, Semi-Annual Updated Resettlement Progress Report
- ix. Prepare Due Diligence Report of the Project
- x. Maintain correspondences with the Employer and the Contractor
- xi. Assist to PIU



## 6.10. KEY DATES

The consultant has noted the following key dates for the month of **June, 2018**.

**Table 8: KEY DATES of EVENTS / ACTIVITIES**

S. No	Date	Activities/Events	Remarks
1		Frequent visit by client and concerned authorities.	

## 7. DETAILS OF ACTIVITIES CARRIED OUT IN THIS MONTH

### 7.1. PHYSICAL PROGRESS IN THIS MONTH

The Employer has discussed/agreed/decided to curtail (base and Asphalt) from the scope of the work except R2 stretch to meet other items which are essential for the projects. Those are as below:

some works were missed in original contract itself, some works were not foreseen in original contract, some works due to local demand etc.

Therefore, following are the physical progress with respect to variation order No-03 which has been already approved:

**Table 9: PHYSICAL PROGRESS in STORM WATER DRAINS till June, 2018**

S.N.	Location	Proposed Length in (m)	Progress		Total to Date in (m)	Progress (%)
			Up to previous month (m)	This Month in (m)		
1	B1	3848.00	3848.00	0.00	3848.00	In VO-4
2	B2	4374.00	3893.60	480.40	4374.00	In VO-4
3	B3	3463.00	3463.00	0.00	3463.00	In VO-4
4	S5	1201.00	1201.00	0.00	1201.00	In VO-4
5	S9	2930.00	2930.00	0.00	2930.00	In VO-4
6	S11	1552.60	1440.60	112.00	1552.60	In VO-4
7	S13	4864.00	4864.00	0.00	4864.00	In VO-4
8	CN2	2197.30	2197.30	0.00	2197.30	In VO-4
9	CN3	2238.15	2238.15	0.00	2238.15	In VO-4
10. a	A1LINE1	624.80	621.88	2.92	624.80	In VO-4





S.N.	Location	Proposed Length in (m)	Progress		Total to Date in (m)	Progress (%)
			Up to previous month (m)	This Month in (m)		
10. b	A1LINE2	694.90	694.90	0.00	694.90	In VO-4
11	A1 - Lanes	-	8.80	0.00	8.80	Crossing
12	Rani	6596.28	6596.28	0.00	6596.28	In VO-4
	<b>Total</b>	<b>34,592.83</b>	<b>33,997.51</b>	<b>595.32</b>	<b>34,592.83</b>	<b>100.00%</b>



Table 10: PHYSICAL PROGRESS in ROAD SIDE DRAINS (till June, 2018)

S.No	Location	Length (m)	Total Length (m)	Progress ( length in meter )		Total Till Date	%age	Remarks
				Up to previous month	This Month			
1	R2	3,420.00	6,840.00	6,680.70	-	6,680.70		Pushpalal chowk to Bhatta chowk
2	R3	2,233.00	2,993.00	2,925.00	-	2,925.00		Dharma Banda Marga (Devkota chowk to Jatuwa chowk)
3	R4	1,246.00	2,212.00	892.20	-	892.20		Jatuwa Marga (Koshi highway to Jatuwa chowk to Singhiya river)
4	R5	1,068.00	2,136.00	1,993.00	-	1,993.00		Satya Narayan Marga and College Road
5	R6	1,280.00	2,560.00	1390.00	1100.00	2490.00		Shahi Marga
6	R7	485.00	615.00	615.00	-	615.00		Manakamana Marga
	R7			249.00	-	249.00		Chakabhara Marga to Mankamana Marga
7	R8	370.00	740.00	740.00	-	740.00		Madhumara Marga
	R8			602.00	-	602.00		Madhumara Marga
8	R9D	116.00	232.00	235.40	-	235.40		Phanindra Marga
9	R13	220.00	440.00	400.00	-	400.00		Dewalaya Marga
10	R16	580.00	1,160.00	1,150.00	-	1,150.00		Satya Marga
11	R21	2,420.00	2,420.00	1,985.20	-	1,985.20		Prativa Marga



S.No	Location	Length (m)	Total Length (m)	Progress ( length in meter )		Total Till Date	%age	Remarks
				Up to previous month	This Month			
12	R22	359.00	718.00	676.00	-	676.00		Krishna Marga
13	R24	390.00	780.00	768.00	-	768.00		Bina Marga
14	R25	594.00	1,188.00	1,131.10	-	1,131.10		Devi Marga
15	R26	620.00	1,240.00	1,258.00	-	1,258.00		Pasang Marga
16	R27	977.00	1,954.00	2099.00	-	2099.00		Pipal Marga
17	R28	620.00	1,240.00	950.00	-	950.00		Pustakalaya Marga
18	R29	620.00	1,240.00	1265.00	-	1265.00		Shanti Marga
19	R30	328.00	656.00	357.00	-	357.00		Phanindra Marga
20	R31	187.00	374.00	350.00	-	350.00		Bindabasini Marga (West Side)
21	R32	189.00	378.00	370.00	-	370.00		Tintoliya Marga
22	R37	785.00	1,570.00	892.80	-	892.80		Bishav Marga
23	R64	120.00	120.00	121.00	-	121.00		Satya Narayan Marga
24	R78	92.00	184.00	82.00	-	82.00		Binayak Marga
25	T2L19 R	177.00	354.00	329.75	-	329.75		Bindabasini Marg
26	T2L19 P	103.00	206.00	226.20	-	226.20		Bindabasini Marg



S.No	Location	Length (m)	Total Length (m)	Progress ( length in meter )		Total Till Date	%age	Remarks
				Up to previous month	This Month			
27	T2 19 U	81.00	162.00	144.20	-	144.20		Bindabasini Marg
28	R107	157.00	314.00	288.00	-	288.00		Near to Saptakoshi school
29	R108	96.00	192.00	192.00	-	192.00		Near to Saptakoshi school
30	R109	90.00	360.00	355.00	-	355.00		Near to Saptakoshi school
31	T3L26E	93.00	186.00	177.80	-	177.80		Near to Saptakoshi school
32	T2L18O	143.00	286.00	268.00	-	268.00		Bina Marga
33	R42	Additional Road Side Drains		271.60	-	271.60		Jahada Marga
34	R104			290.93	-	502.88		VIP Marga
35	T2L26F			110.60	-	110.60		Budhabihar Marga
36	R73			263.20	-	453.20		Bhanubhakta Marga
37	T3L29			80.70	-	80.70		
38	WWTP				2880.00	1934.62	700.00	2634.62
	<b>Total</b>	<b>20,259.00</b>	<b>36,050.00</b>	<b>33,921.65</b>	<b>1800.00</b>	<b>35,721.65</b>	<b>99.089%</b>	



Table 11: PHYSICAL PROGRESS in SEWER LINES (till June, 2018)

S.N.	Location	As per VO-4		Up to Previous Month		This month		Total to date		Progress % age		Remarks
		Distance	Manhole No	Distance	Manhole No	Distance	Manhole No	Distance	Manhole No	Distance	Manhole No	
1	HDPE (T1)	3,817.10	127	3819.50	125	0.00	2.00	3819.50	127			
2	HDPE (T2)	13,595.40	485	13540.65	459	90.00	26.00	13630.65	485			
3	HDPE (T3)	6,947.10	258	6890.10	247	0.00	9.00	6890.10	256			
4	HDPE (T4)	117.30	3	112.00	3	0.00	0.00	112.00	3			
5	<b>Sub Total (HDPE)</b>	<b>24,476.90</b>	<b>873</b>	<b>24,362.25</b>	<b>834</b>	<b>90.00</b>	<b>37.00</b>	<b>24,452.25</b>	<b>871</b>	<b>99.53</b>	<b>99.77</b>	
6	Hume pipe(T1)	5,026.80	144	4761.20	125	0.00	19.00	4761.20	144			
7	Hume pipe(T2)	9,488.00	276	9344.40	236	159.30	40.00	9503.70	276			
8	Hume pipe(T3)	4,493.30	136	4736.40	106	0.00	30.00	4736.40	136			
9	Hume pipe(T4)	183.50	5	185.00	5	0.00	0.00	185.00	5			
10	<b>Sub Total (Hume pipe) =</b>	<b>19,191.60</b>	<b>561</b>	<b>19,027.00</b>	<b>472</b>	<b>249.30</b>	<b>89.00</b>	<b>19,186.30</b>	<b>561</b>	<b>99.97</b>	<b>100.00</b>	
11	<b>Total (HDPE + Hume pipe) =</b>	<b>43,668.50</b>	<b>1434</b>	<b>43,389.25</b>	<b>1306</b>	<b>249.30</b>	<b>126.00</b>	<b>43,638.55</b>	<b>1432</b>	<b>99.93</b>	<b>99.86</b>	



**Table 12: PHYSICAL PROGRESS in MANHOLES, SEWER INLETS & HOUSE CONNECTION CHAMBER (till June, 2018)**

S.N.	Description	Proposed Quantity (no.)	Up to Previous Month	This Month	Total to Date	Progress (%)
1	Sewer inlet	2924.00	2015.00	(251.00)	1764.00	60.33
2	House connection chamber	4500.00	2104.00	(825.00)	1279.00	28.42

Note: Quantity of SI and HCC corrected as per actual measurement during IPC – 30.

**Table 13: PHYSICAL PROGRESS in ROADS & LANES (till June, 2018)**

SN	Road Name / Location	Proposed length (m)	Progress length in (m)		Total to date	Progress %age
			Previous month	this month		
1	R2	3,050.00	3,044.00	-	3,044.00	
2	R2	130.00	130.00	-	130.00	
2	R2	50.00	50.00	-	50.00	
3	R2	177.00	166.00	-	166.00	
4	R3	2,233.00	2,233.00	-	2,233.00	
5	R4	2,163.00	1,218.00	-	1,218.00	
6	R5	370.00	370.00	-	370.00	
7	R5	600.00	604.00	-	604.00	
8	R6	460.00	460.00	-	460.00	
10	R6	820.00	-	-	-	
11	R6	539.00	-	-	-	
12	R7	624.00	407.00	-	407.00	
13	R7	190.00	187.00	-	187.00	



SN	Road Name / Location	Proposed length (m)	Progress length in (m)		Total to date	Progress %age
			Previous month	this month		
14	R7	95.00	95.00	-	95.00	
15	R7	414.00	414.00	-	414.00	
16	R8	600.00	670.00	-	670.00	
17	R8	355.00	355.00	-	355.00	
18	R8	427.00	427.00	-	427.00	
20	R9	116.00	107.00	-	107.00	
21	R9	210.00	220.00	-	220.00	
22	R9	123.00	117.00	-	117.00	
23	R9	116.00	116.00	-	116.00	
24	R9	84.00	84.00	-	84.00	
25	R10	120.00	120.00	-	120.00	
26	R10	180.00	185.00	-	185.00	
27	R10	320.00	320.00	-	320.00	
28	R10	220.00	220.00	-	220.00	
29	R10	182.00	172.00	-	172.00	
30	R11	160.00	160.00	-	160.00	
31	R11	205.00	205.00	-	205.00	
32	R12	140.00	140.00	-	140.00	
33	R12	280.00	280.00	-	280.00	
34	R12	680.00	480.00	-	480.00	
35	R12	340.00	340.00	-	340.00	
36	R13	220.00	220.00	-	220.00	
37	R13	224.00	224.00	-	224.00	
38	R14	261.00	256.00	-	256.00	
39	R15	210.00	210.00	-	210.00	
40	R16	40.00		-	-	
41	R16	540.00	540.00	-	540.00	



SN	Road Name / Location	Proposed length (m)	Progress length in (m)		Total to date	Progress %age
			Previous month	this month		
42	R16	215.00	221.00	-	221.00	
43	R17	375.00	375.00	-	375.00	
44	R17	222.00	225.00	-	225.00	
45	R18	464.00	464.00	-	464.00	
46	R19	236.00	232.00	-	232.00	
47	R20	108.00	108.00	-	108.00	
48	R21	600.00	600.00	-	600.00	
49	R21	140.00	140.00	-	140.00	
50	R21	580.00	580.00	-	580.00	
51	R22	358.00	358.00	-	358.00	
52	R23	226.00	223.00	-	223.00	
53	R24	384.00	384.00	-	384.00	
54	R25	599.00	594.00	-	594.00	
55	R26	617.00	617.00	-	617.00	
56	R26	244.00	244.00	-	244.00	
57	R27	810.00	810.00	-	810.00	
58	R27	177.00	183.00 -	-	183.00	
59	R28	635.00	635.00	-	635.00	
60	R28	158.00	158.00	-	158.00	
61	R29	620.00	477.00	-	477.00	
62	R29	263.00	257.00	-	257.00	
63	R30	212.00	212.00	-	212.00	
64	R31	187.00	187.00	-	187.00	
65	R32	190.00	190.00	-	190.00	
66	R33	285.00	285.00	-	285.00	





SN	Road Name / Location	Proposed length (m)	Progress length in (m)		Total to date	Progress %age
			Previous month	this month		
67	R34	160.00	161.00	-	161.00	
68	R35	160.00	160.00	-	160.00	
69	R36	218.00	220.00	-	220.00	
70	R37	220.00	226.00	-	226.00	
71	R37	200.00	200.00	-	200.00	
72	R38	120.00	120.00	-	120.00	
74	R40	332.00	200.00	-	200.00	
76	R42	218.00	218.00	-	218.00	
77	R64	121.00	121.00	-	121.00	
78	R65	282.00	282.00	-	282.00	
79	R71	100.00	100.00	-	100.00	
81	R73	220.00		-	-	
83	R75	136.00	136.00	-	136.00	
84	R76	272.00	273.00	-	273.00	
85	R77	97.00		-	-	
86	R78	92.00	93.00	-	93.00	
87	R82	280.00	280.00	-	280.00	
88	R82	114.00	114.00	-	114.00	
89	R83	369.00	369.00	-	369.00	
90	R84	120.00	120.00	-	120.00	
91	R86	60.00	60.00	-	60.00	
92	R86	140.00	140.00	-	140.00	



SN	Road Name / Location	Proposed length (m)	Progress length in (m)		Total to date	Progress %age
			Previous month	this month		
93	R90	320.00	316.00	-	316.00	
94	R91	180.00	180.00	-	180.00	
95	R102	62.00	72.00	-	72.00	
96	R103	173.00	147.00	-	147.00	
97	R104	273.00	276.00	-	276.00	
98	R105	168.00	65.00	-	65.00	
101	R107	167.00	185.00	-	185.00	
102	R108	97.00	36.00	-	36.00	
103	R109	200.00		-	-	
104	R110	252.00	245.00	-	245.00	
105	R111	191.00	191.00	-	191.00	
106	R112	216.00	216.00	-	216.00	
107	R114	320.00	326.00	-	326.00	
108	R121	121.00	121.00	-	121.00	
109	R122	280.00	280.00	-	280.00	
110	T3 Line 23C	145.00	145.00	-	145.00	
111	T3 Line 23	58.00	55.00	-	55.00	
112	T3 Line 24A	63.00	63.00	-	63.00	
113	T3 Line 24B	81.00	77.00	-	77.00	
114	T3 Line 24	33.00	33.00	-	33.00	



SN	Road Name / Location	Proposed length (m)	Progress length in (m)		Total to date	Progress %age
			Previous month	this month		
115	T3 Line 25A	133.00	123.00	-	123.00	
116	T3 Line 25 B	194.00	188.00	-	188.00	
117	T3 Line 25C	148.00	140.00	-	140.00	
118	T3 Line 25	52.00	52.00	-	52.00	
119	T3 line 27	61.00	50.00	-	50.00	
120	T3 Line 26 E	96.00	90.00	-	90.00	
121	T3 Line 26	128.00	126.00	-	126.00	
122	T3 Line 29	87.00	90.00	-	90.00	
123	T3 Line 30	205.00	205.00	-	205.00	
124	T3 line 31A	177.00	170.00	-	170.00	
125	T3 Line 32	235.00	231.00	-	231.00	
126	T3 Line 33B	170.00	164.00	-	164.00	
127	T3 Line 33A	134.00	134.00	-	134.00	
128	T2 Line 20	320.00	320.00	-	320.00	
129	T2 Line 19	225.00	225.00	-	225.00	
130	T2 Line 18Y	119.00	119.00	-	119.00	
131	T2 line 19S	100.00	100.00	-	100.00	
132	T2 Line 19 o	71.00	71.00	-	71.00	
134	T2 line 18X	154.00	154.00	-	154.00	
135	T2 Line 18O	143.00	143.00	-	143.00	
138	T2 Line 19	153.00	153.00	-	153.00	
140	T2 Line 19W	56.00	56.00	-	56.00	
141	T2 Line 19V	93.00	82.00	-	82.00	
142	T2 Line 19V	138.00	138.00	-	138.00	
143	T2 line 19X	56.00	57.00	-	57.00	
144	T2 line 19Z	48.00	61.00	-	61.00	
145	T2 Line 19Y	106.00	109.00	-	109.00	



SN	Road Name / Location	Proposed length (m)	Progress length in (m)		Total to date	Progress %age
			Previous month	this month		
146	T2 line 19P	107.00	109.00	-	109.00	
148	Bindabasini Marga T2Line19 R,P,Q	350.00	350.00	-	350.00	
150	T2 line 19N	160.00	165.00	-	165.00	
151	T2 Line 19K	205.00	96.00	-	96.00	
155	T3 Line 12	54.00		-	-	
158	T3 Line 13C	285.00	285.00	-	285.00	
159	T2 line 19G	63.00		-	-	
160	T2 line 19H	90.00	70.00	-	70.00	
164	T2 Line 19C	50.00	66.00	-	66.00	
165	T2 Line 19B	134.00	138.00	-	138.00	
168	T3 Line 11A	142.00	137.50	-	137.50	
171	T3 Line 11F	67.00	67.00	-	67.00	
176	T2 Line 26 F	68.00	68.00	-	68.00	
177	T1 Line 16A	140.00	140.00	-	140.00	
178	T1 Line 16C	200.00	200.00	-	200.00	
179	T1 line 17	86.00	86.00	-	86.00	
180	T1 Line 17	82.00	82.00	-	82.00	
181	T1 Line 17A	96.00	96.00	-	96.00	
182	T1 Line 16 B	205.00	205.00	-	205.00	
183	T1 Line 15	224.00	224.00	-	224.00	
184	T1 Line 14	60.00	60.00	-	60.00	
187	T1 Line 13	165.00	165.00	-	165.00	
188	T1 Line 17	115.00		-	-	



SN	Road Name / Location	Proposed length (m)	Progress length in (m)		Total to date	Progress %age
			Previous month	this month		
189	T1 Line 17C	97.00		-	-	
192	T2 Line 19H	80.00	80.00	-	80.00	
193	T1 Line 5	290.00	290.00	-	290.00	
194	T1 Line 12	140.00	140.00	-	140.00	
202	S13 (Storm Line)	203.00	203.00	-	203.00	
203		389.00	-	-	-	
204	WWTP	1,440.00	800.00	640.00	1440.00	
205	WWTP	750.00	640.00	110.00	750.00	
<b>Total</b>		<b>44,643.00</b>	<b>39,543.50</b>	<b>750.00</b>	<b>40,293.50</b>	<b>90.26</b>



Table 14: PHYSICAL PROGRESS in WASTE WATER TREATMENT PLANT (WWTP), JATUWA till June, 2018

Physical Progress till June, 2018								
S.N.	Description	Proposed Quantity as per VO-03	unit	Progress		Total to Date	Progress in %age	Remarks
				Up to Previous month	This Month			
1	Anaerobic Pond	3.00	Nos.	3.00	0.00	3.00	100.00	
2	Facultative Pond	3.00	Nos.	2.99	0.01	3.00	100.00	
3	River Training Work	600.00	m	600.00	0.00	600.00	100.00	Additional gabion work to protect the boundary wall at River side face : completed
4	Boundary Wall	1330.00	m	1283.00	0.00	1283.00	96.46	
5	Office cum Lab Building	1.00	Nos.	1.00	0.00	1.00	100.00	
6	Workshop Building	1.00	Nos.	1.00	0.00	1.00	100.00	
7	Generator / Changing House	1.00	Nos.	1.00	0.00	1.00	100.00	
8	Sump Well	1.00	Nos.	0.85	0.03	0.88	88.00	First floor shuttering, formwork and re bar works are in progress
9	Sludge Drying Bed	1.00	Nos.	0.97	0.02	0.97	97.00	Filter materials laying in progress
10	Bio-engineering	1.00	Job	0.50	0.40	0.90	90.00	
10	Road Side Drain	2880.00	m	1731.00	770.00	2501.00	86.84	Progressing



Physical Progress till <b>June, 2018</b>								
S.N.	Description	Proposed Quantity as per VO-03	unit	Progress		Total to Date	Progress in %age	Remarks
				Up to Previous month	This Month			
11	Guard House	1.00	Nos.	0.90	0.00	0.90	90.00	
12	Enclosure chamber including bar screen chamber	1.00	Nos.	0.55	0.25	0.80	80	Retaining wall is completed, roof truss works are in progress
13	Distribution chamber	1.00	Nos.	0.60	0.20	0.80	80	
14	Collection chamber - 2	1.00	Nos.	1.00	0.00	1.00	100	Pipe laying is in the progress
15	Interconnection chamber	4.00	Nos.	3.50	0.30	3.80	95.00	progressing
16	Oil & Grease chamber	1.00	Nos.	0.90	0.03	0.93	93	
17	Grit chamber	1.00	Nos.	0.80	0.10	0.90	90	<b>Average Progress – 91.15%</b>
<b>Note:</b> Dedicated feeder electricity line is in progress (Civil works almost finished and the accessories have been purchased).								



**Table 15: PHYSICAL PROGRESS in PRODUCTION OF PRECAST ITEMS at KATAHARI till June, 2018**

Physical Progress till June , 2018						
S.N.	Description	Unit	Progress		Total to Date (nos.)	Remarks
			Up to Previous month (nos.)	This Month (nos.)		
1	Precast Slab	No	131,713.00	0.00	131,713.00	
2	Precuts	No	11,209.00	0.00	11,209.00	
3	Kerb Stone	No	23,135.00	0.00	23,135.00	
4	Manhole	No	2,200.00	0.00	2,200.00	
5	Sewer Inlet	No	2,524.00	0.00	2,524.00	
6	House Connection Chamber	No	2,287.00	0.00	2,287.00	

**Table 16: PHYSICAL PROGRESS in PRODUCTION OF RCC PIPES at ITAHARI till June, 2018**

Physical Progress till June, 2018						
S.N.	Description	Diameter (mm)	Progress		Total to Date (nos.)	Remarks
			Up to Previous month (nos.)	This Month (nos.)		
1	RCC Pipe	200	2,123	0	2,123	
2	RCC Pipe	300	508	0	508	
3	RCC Pipe	350	216	0	216	
4	RCC Pipe	400	430	0	430	
5	RCC Pipe	450	84	0	84	
6	RCC Pipe	500	551	0	551	
7	RCC Pipe	600	963	0	963	
8	RCC Pipe	700	1,296	0	1,296	
9	RCC Pipe	900	278	0	278	
10	RCC Pipe	1000	1,011	0	1,011	
11	RCC Pipe	1600	373	0	373	
	<b>Total</b>		<b>7,853</b>	<b>0.00</b>	<b>7,853</b>	





## 8. CONTRACTOR'S MANPOWER

*Table 17: CONTRACTOR'S KEY STAFFS in June, 2018*

DESIGNATION	NO	REMARKS
Project / Contract Manager	1	
Planning Engineer/Construction Engineer	1	
Construction Engineer	1	
Site Engineers	2	
Quality Control Manager	1	
Office/Bill Engineer	0	
Junior Engineer	2	
Sub Overseers	2	
Safety Manager / Senior Site Supervisor	1	
Accountant / Office Manager	1	
Lab Assistant	2	
Store Keeper	3	
Light Drivers	4	
Machine Operator	4	
Site Supervisor	2	
Other Supporting Staff	10	
Skilled Labor at Site	>30	
Unskilled Labor at Site	>50	



## 9. CONTRACTOR'S EQUIPMENT

*Table 18: CONTRACTOR'S EQUIPMENT at JUDI CAMP*

EQUIPMENT	NO	REMARKS
Excavator	6	
Back Hoe JCB	9	
Grader	2	
Crane / Teller	1	
Water Tanker	3	
Tractor	6	
Tipper	4	
Light Vehicle	4	
Motorbike	10	
Kerb Stone Machine Set	1	
Generator	4	
Welding Machine	3	
Diesel Tank with Pump	1	
Stand Drill Machine	1	
Gas Cutter Set	1	
Pipe Cutter	1	
Hand Grinder	1	
Plate Compactor	2	
Monkey Jumper	1	
Concrete Batching Plant	1	
Electric Vibrator	3	
Bar Bending Machine	3	
Bar Cutter Machine	3	
Transit Mixer	0	
Concrete Mixer (Hydraulic)	2	
Concrete Mixer (Manual)	2	
Asphalt Concrete Plant	1	
Asphalt Paver Machine	1	

## 10. DETAILS OF SAFEGUARD ACTIVITIES (SOCIAL, ENVIRONMENTAL AND RESETTLEMENT ACTIVITIES AND ISSUES)

### 10.1. SOCIAL ISSUES

OPERATION GUIDELINES FOR COMMUNITY MOBILIZATION AND IMPLEMENTATION OF CDP

- **VISIT, INTERACTION AND CONSULTATION WITH COMMUNITY PEOPLE**

jj) Social Development Specialist (SDS) of the DSC is closely monitoring the social issues resulted due to the project activities. Visiting and interacting with people, Tole Lane Organizations (TLOs) and formal and informal consultation meetings are going on in this regard.

The project is regularly disseminating the information and message to community people about the project features, its purpose, methods of use and functionality of infrastructure under construction by the project through such consultation meetings. These meetings are fruitful to provide prior information regarding the project construction activities before execution at the community level.



It is an appropriate platform to interact and make dialogue among 4 Cs (The Client, Consultant, Contractor and Community) about the project features, prime objectives, purpose, work methodology and potential threats/ cautions to be adopted during the project implementation.

The visits, meetings and consultations with community people at TLOs have provided many opportunities to obtain people's views and perception towards the project. Community people of those particular localities used to discuss extensively in the project features and have been provided some suggestions for efficient carryover of the project components and assured cooperation and coordination in the project execution in their localities.

Social Development Specialist (SDS) / DSC along with PIU, NGO staffs have been actively participated in the meetings. SDS/DSC as usual facilitate the consultation meetings, support to prepare meeting minutes and obtain decisions.

Apart from this, many field visits and observations with community are also important to disseminate project message and monitor project features in the community. Monitoring visits along with Project Manager (PM) and TL/DSC to the core project area, community development program area and construction sites have been beneficial to make insight to the project progress, its effectiveness and challenges.

- **SAFEGUARD DESK**

kk) A Safeguard Desk established in the project has been effective in planning, monitoring and follow up of all social development/ safeguard issues including the resettlement plan. It has been started as a functional mechanism consisting of PIU, NGO and DSC for this purpose. The desk consists of the Social Development Chief of PIU, Team Leader of CDP/ NGO and SDS of DSC with close consultation and guidance of PM/ PIU. It is in compliance with the Aide Memoire of last ADB Mission (21 April - 12 May 2014). It is decided that the desk will review, update and discuss the progress, issues, constraints and challenges of social aspects, Community Development Program and implementation of resettlement plan as well as monitoring of social development activities.

- **TO T ON GENDER AND SOCIAL INCLUSION (GESI) MAINSTREAMING**

ll) The project has been envisaged a 'Training of Trainers (ToT) on GESI Mainstreaming' for Biratnagar Sub Metropolitan City (BSMC) Office and STIUEIP project staff. The Aide Memoir Report of the ADB Review Mission has also noted about the training to be conducted in Biratnagar for the staff of municipality and related agencies. The Mission has recommended for conducting GESI training relating to urban infrastructure development to staff of municipality, municipal steering committee, PIU, local stakeholder agency and make them accountable for the better results. In line with this, the project is going to conduct Gender and Social Inclusion (GESI) Sensitization Training when it is approved. The revised ToT has been submitted to PIU, STIUEIP, Biratnagar incorporating the comments from PMSC and PCO.

Safeguard desk members discussed and reviewed the proposed 'ToT on GESI Mainstreaming' proposal. Social Development Specialist (SDS) of DSC has reviewed the detail proposal and



adjusted budget accordingly for the 'Training of Trainers (ToT)' model. The training arrangement will be decided after the approval of this proposal by the project authority. Primarily it will be a 5 days training focusing mainly on Gender and Social Inclusion Action Plan (GESIAP) comprising other project elements. About 35 participants from Biratnagar Metropolitan City (BMC) office and project staffs will participate in the training.

- **Update of Small Facilities Construction and other Activities in CDP/STIUEIP**

mm) The latest safeguard desk meeting has reviewed all ongoing and completed small facilities infrastructure and other activities implemented under the Community Development Program (CDP), a component of STIUEIP. It provided a common understanding and status information of infrastructures and activities under the CDP program to all safeguard desk members.

A glimpse of community development program has been obtained by the presentation in the appraisal and interaction meeting. Total 7,417.36 m. roads and 13,246.32 m drains are under construction through small facilities infrastructure by CDP/STIUEIP. Regarding on the household toilet, total 458 nos. such toilets has been built by May 2015. Similarly, 10 hand pumps have been installed, 45 hands pump platforms built and 5 public toilets are complete.

- **Employment in Project**

nn) The core activities of the project i.e. sewerage pipe laying, drain construction and road/ lane improvement provided employment to about 270 in a day this month. The employed human resources varied from skilled engineer/ project manager to general labor, supervisor, (sub) overseers and mechanics. However, a very few women (16%) are working in the construction activities as skilled and unskilled labor but they are paid equal to men for similar type of work. Three women Assistant Sub-Engineers are also working at construction sites after completing OJT (on the job training) successfully at the same sites from different CTEVT affiliated institutes of nearby districts. The contractor has been suggested to increase the work opportunity to women in different types of works.

- **General**

oo) Sewer/ Drainage lines are being laid in the public rights of way (RoW). During construction, if any trees or crops or structures demolished, it shall be properly addressed with compensation. Private individuals or shopkeepers will also be looked into if their livelihood is affected by the disturbance during constructions/ pipe laying works. Apart from this, the project did not encounter any resettlement or re-location and any compensation issue.



## 11. KEY ISSUES AND REMARKS / REASON FOR DEVIATION (IF ANY) AFFECTING PROGRESS

pp) Following are the key issues affected in progress:

- Disturbance due to underneath existing water supply pipe lines network, under-ground cables, electric poles shifting etc.
- Settlement at various stretches due to heavy rain falls (monsoon) and high flood.
- Insufficient manpower's at site from the contractor side.
- Unseasonal monsoon.
- House connection and sewer inlet placement works.

## 12. WORK PLAN FOR THE NEXT MONTH

qq) Following are the Contractor's works in the next month (**Please refer to the contractor's progress report for quantitative plan works for next month**) the revised work program for remaining works after Variation order no-03 as discussed/agreed between three parties - 3C.

- Defect remedial works and outstanding works as per schedule.
- Repair as well as maintenance work in different lanes as per instruction /or/ required as per site condition.
- Remaining works at WWTP.
- Dedicated electricity supply to WWTP, Jatuwa.
- Laying of new line and relocation of existing water supply pipe lines.
- Sewer pipe lines laying for remaining portion.
- Inlet and house connection chamber placement.
- RCC drain work and sub base work at R6.
- Relocation of electrical poles in R3, R6 & R29.
- Repairing of sewer line.



## **ANNEX-1: Photographs of June, 2018**







A view of WWTP, Jatuwa from the entrance gate



A view of WWTP, Jatuwa



A view of sump well



Painting work is progressing at Lab building, WWTP, Jatuwa





A view of laboratory room after fixation of rack



A view of an Anaerobic pond



A view of inner road at WWTP, Jatuwa

## **ANNEX-2: Minutes of Meeting & letters **June, 2018****





## **ANNEX-3: Laboratory Test Results of **June, 2018****



SECONDARY TOWNS INTEGRATED URBAN ENVIRONMENTAL IMPROVEMENT PROJECT									
BIRATNAGAR Sub-Metropolitant City									
STIUEIP									
Monthly Laboratory Testing Report									
( For The Month OF JUNE 2018)									
Consultants: SMEC-Brisbane-AQUA-CEMAT-BDA				Contractors: CTCE-KALIKA J/V					
S. No.	Description of Material	Type of test	Total No. of Test upto previous month	Test Performed for this month				Total No. of Test upto This month	Remarks
				No. of Tests	Passed	Failed	Retest Recommended		
1	Granular Material/Gravel material	Sieve analysis	90	0	0	0		90	
2	SUB GRADE Preparation as Per Specification	MDD & OMC	103	1	1	0		104	
		Field density	797	16	15	1		813	
		C.B.R	103	1	1	0		104	
3	BRICK WORK Required Test	Water Absorption	445	0	0	0		445	
		Compressive Strength	3546	0	0	0		3546	
4	Masonry Mortar (CM 7.5)	Compressive strength	4789	0	0	0		4789	
5	CONCRETE AGGREGATE Coarse aggregate (20 mm)	Sieve analysis (20 mm)	473	0	0	0		473	
		LAA	377	0	0	0		377	
		Specific Gravity	17	0	0	0		17	
		FI	376	0	0	0		376	
		ACV	424	0	0	0		424	
		Fine aggregate (Sand)	Sieve analysis	539	0	0	0		539
6	CONCRETE MIX DESIGN Concrete M15/20, M20/20, M25/20, & M30/20	Concrete mix Design	77	0	0	0		77	
		Compressive strength	471	0	0	0		471	
		Slump test	75	0	0	0		75	





SECONDARY TOWNS INTEGRATED URBAN ENVIRONMENTAL IMPROVEMENT PROJECT									
BIRATNAGAR Sub-Metropolitant City									
Monthly Laboratory Testing Report									
( For The Month OF-JUNE 2018)									
Consultants:SMEC-Brisbane-AQUA-CEMAT-BDA				Contractors: CTCE- KALIKA JV					
S. No.	Description of Material	Type of test	Total No. of Test upto previous month	Test Performed for this month				Total No. of Test upto This month	Remarks
				No. of Tests	Passed	Failed	Retest Recommended		
7	CEMENT Required Test								
	OPC Cement	Setting time	458	0	0	0		458	
		Normal Consistency	458	0	0	0		458	
8	CONCRETE								
	Work Mix Test M15,M20,M25,M30	Compressive strength	15237	48	48	0		15285	
9	REINFORCEMENT	Required Test							
	Reinforcement tors steel	As per Specification	81	0	0	0		81	
10	PAVEMENT MATERIALS								
	Sub Base Materials	Sieve analysis	319	10	10	0		329	
		MDD & OMC	65	3	3	0		68	
		CBR	71	3	3	0		74	
		Field density	504	13	13	0		517	
11	CS Base	Sieve analysis	142	7	7	0		149	
	Crushed Stone Base	MDD & OMC	14	1	1	0		15	
	Material Laying	C.B.R	35	1	1	0		36	
		FI & C.Ratio	136	7	7	0		143	
		LAA	122	7	7	0		129	
		SSS	64	7	7	0		71	
		AV	136	7	7	0		143	
		Field Density & OMC	197	0	0	0		197	



SECONDARY TOWNS INTEGRATED URBAN ENVIRONMENTAL IMPROVEMENT PROJECT									
BIRATNAGAR Sub-Metropolitant City									
Monthly Laboratory Testing Report									
( For The Month OF-JUNE 2018)									
Consultants: SMEC-Brisbane-AQUA-CEMAT-BDA				Contractors: CTCE- KALIKA J/V					
S. No.	Description of Material	Type of test	Total No. of Test upto previous month	Test Performed for this month				Total No. of Test upto This month	Remarks
				No. of Tests	Passed	Failed	Retest Recommended		
12	ASHPHALT CONCRETE  Combine Mixed  Individual Co&FA Test Mix Design	Sieve analysis	39	0	0	0		39	
		FI	24	0	0	0		24	
		ACV	24	0	0	0		24	
		LAA	24	0	0	0		24	
		Sp gravity	4	0	0	0		4	
		S.S.S	43	0	0	0		43	
13	BITUMEN TEST  60/100 Bitumen  As per DORbook section  803 Table 6.14/6.73	Penetration at 25.0	4	0	0	0		4	
		Softing point(ing ball)	4	0	0	0		4	
		Flash point/Fire Point	4	0	0	0		4	
		Ductility at 25.0	4	0	0	0		4	
		Specific at 25.0	4	0	0	0		4	
		Water Content	4	0	0	0		4	
		Loss on Heating for 5 hrs	4	0	0	0		4	
		Pen-of residue after loss on Heating	4	0	0	0		4	
		Solubility in trichloroethylene	4	0	0	0		4	
		14	Humpipe Test	Three Edge Bearing Load Test	7	0	0	0	
15  16	MARSHALL MIX DESIGN  Marshall Stability Test	WEARING COURSE	2	0	0	0		2	
		Bulk density	108	0	0	0		108	
		Stability	108	0	0	0		108	
		Flow	108	0	0	0		108	
		Air voids	108	0	0	0		108	

*[Handwritten signature]*

*[Handwritten signature]*  






SECONDARY TOWNS INTEGRATED URBAN ENVIRONMENTAL IMPROVEMENT PROJECT									
BIRATNAGAR Sub-Metropolitant City						STIUEIP			
Monthly Laboratory Testing Report									
( For The Month OF-JUNE 2018)									
Consultants: SMEC-Brisbane-AQUA-CEMAT-BDA				Contractors: CTCE- KALIKA J/V					
S. No.	Description of Material	Type of test	Total No. of Test upto previous month	Test Performed for this month				Total No. of Test upto This month	Remarks
				No. of Tests	Passed	Failed	Retest Recommended		
		Bitumen extraction	38	0	0	0		38	
		Voids in Mineral Agg	108	0	0	0		108	
		Job mix in AC Plant	70	0	0	0		70	
17	<b>BITUMEN SPREAD TEST</b>								
	Prime coat	Application rate	57	0	0	0		57	
	Tack coat	Application rate	44	0	0	0		44	
18	<b>Machines/Equipment</b>								
	Caliberation of compressive	100KN Manual	3	0	0	0		3	
	Testing machine	500 KN Manual	3	0	0	0		3	
	C.B.R Machine	50KN/30KN	2	0	0	0		2	
	Marshall Stability Machine	50KN/25KN	2	0	0	0		2	
19	<b>MISCELLANEOUS</b>								
	GI Wire(Dabion Boxes)		5	0	0	0		5	
	Factory Test Report of Cement		9	0	0	0		9	
	Factory Test Report of Iron Steel		35	0	0	0		35	
	Factory Test Report of 80/100 Bitumen		2	0	0	0		2	
	Factory Test Report of UPVC/RDP Pipe		2	0	0	0		2	
	UPVC/RDP Pipe Test Result		2	0	0	0		2	
	Admixture & Carbon steel Fiber		3	0	0	0		3	

MDD/OMC = Max Dry Density  
 Optimum Moisture Content  
 SSS = Sodium Sulphate Soundness  
 ACV = Aggregate Crushing Value  
 CBR=California Bearing Ratio  
 LAA = Los Angeles Abrasion  
 SE=Sand Equivalent  
 SMEC-Brisbane-AQUA-BDA-CEMAT  
 Approved by C.S.E  
 Checked by A.C.S.E  
 Consultant Reps

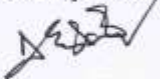
AI=Aggregate Impact Value  
 JMC=Job Mix Formula  
 C.R.=Crushing Ratio  
 CTCE-KALIKA J/V  
 Submitted by Project Manager  
 Prepaid by Q.C Manager  
 Contractors Reps



**Secondary Town Integrated Urban Environmental Improvement Project**  
**Biratnagar Sub-Metropolitan city**  
**Contract Package: STIUEIP/W/BRT/ICB-01**  
**DAILY WEATHER RECORD**  
**FOR THE MONTH of JUNE 2018**

Date	WEATHER Record						Temp.c		
	Sunny	Foggy	Cloudy	Morning Rain HRS	Night Rain Hrs.	Day Rain Hrs.	9:00 AM	5:00 PM	Rain Fall MM
1			Cloudy				23	20.8	
2			Cloudy	Morning Rain HRS			24	21.5	82
3	Sunny						25	21	
4	Sunny						24.5	20.5	
5	Sunny						23.5	21	
6	Sunny						23	21.5	
7			Cloudy	Morning Rain HRS			23	21	50
8			Cloudy				24.5	20.5	
9			Cloudy				25	22.5	
10			Cloudy	Morning Rain HRS			25.5	21.5	
11			Cloudy	Morning Rain HRS			24.5	20.5	52
12			Cloudy	Morning Rain HRS			23.5	21.5	50
13			Cloudy	Morning Rain HRS	Night Rain Hrs.		23	20.5	355
14							24.5	21.5	
15							24.5	20.5	
16			Cloudy	Morning Rain HRS	Morning Rain HRS		23	21.5	960
17							24.5	20.5	200
18							25.25.5	21.5	
19	Sunny				Night Rain Hrs.		25.5	22.5	150
20	Sunny				Night Rain Hrs.		25	20.5	60
21							25	21	
22							24.5	20.5	
23							24.5	20.5	
24	Sunny					Day Rain Hrs.	24.5	21.5	10
25	Sunny					Day Rain Hrs.	25.5	22	10
26							24.5	21.5	
27							25	21.5	64
28			Cloudy	Morning Rain HRS		Day Rain Hrs.	25.5	22	220
29			Cloudy	Morning Rain HRS			25.5	20.5	86
30	Sunny						25	22	


SMEC-Brisbane-AQUA-CEMAT-BDA

Approved By C.S.E 

Record Checked By A.C.S.E


Consultant Reps

CTCE-KALIKA


Submitted By Project Manager 

Record Reported By Q.C Manager

Contractor Reps






SECONDARY TOWNS INTEGRATED URABAN ENVIRONMENTAL IMPROVEMENT PROJECT							
Biratnagar Sub-Metropolitant City							
SUMMARY OF FIELD DENSITY TES (IS:2720:-PART-28)							
FOR THE MONTH OF JUNE 2018							
CH: 0+320 to 0+670,0+400 to0+500,0+000 to 0+080,0+000 to 0+180 & 0+000 to 0+130							
WWTP INNER ROAD							
SUB GRADE							
S.N.	L/Ref. No.	Date	Location/ Area	MDD Gm/CC	Degree of Compaction, %		Remarks
1	FDT-139	5/6/2018	0+350 LHS	1.90	96.07	4.00	
2			0+410 CL	1.92	96.85	6.00	
3			0+500 RHS	1.91	96.49	6.00	
4			0+580 LHS	1.90	96.07	5.00	
5			0+660 RHS	1.65	83.49	5.00	Fail Retest
6			0+660 RHS	1.92	96.85	5.00	After compaction
1	FDT 140	5/6/2018	0+410 LHS	1.92	97.00	5.00	
2			0+450 CL	1.91	96.65	5.00	
3			0+490 RHS	1.93	97.61	5.00	
1	FDT 141	5/6/2018	0+020 LHS	1.90	95.73	5.00	
2			0+075 RHS	1.90	95.73	5.00	
1	FDT 142	5/6/2018	0+020 LHS	1.89	95.35	5.00	
2			0+080 CL	1.91	96.68	5.00	
3			0+160 RHS	1.90	96.05	5.00	
1	FDT 143	5/6/2018	0+030 LHS	1.91	96.68	4.00	
2			0+110 RHS	1.90	96.05	5.00	
Specification Requirement				1.980	>95	OMC <9.0	
SMEC-Brisbane-AQUA-CEMAT-BDA Approved By C.S.E  Test Checked by A.C.S.E Consultant Reps				CTCE-KALIKA J/V Submitted by Project Manager  Test Conducted by Q.C Manager Contractors Reps			



SECONDARY TOWNS INTEGRATED URABAN ENVIRONMENTAL IMPROVEMENT PROJECT							
Biratnagar Sub-Metropolitant City							
SUMMARY OF FIELD DENSITY TES (IS:2720:-PART-28)							
FOR THE MONTH OF JUNE 2018							
CH: 0+320 to 0+670,0+400 to0+500,0+000 to 0+080,0+000 to 0+180 & 0+000 to 0+130							
WWTP INNER ROAD							
SUB BASE							
S.N.	L/Ref. No.	Date	Location/ Area	MDD Gm/CC	Degree of Compaction, %		Remarks
1	FDT 95	10/6/2018	0+340 LHS	2.16	97.52	5.00	
2			0+420 CL	2.16	97.52	6.00	
3			0+510 RHS	2.14	96.37	6.00	
4			0+570 LHS	2.15	96.87	5.00	
5			0+660 RHS	2.17	97.52	5.00	
1	FDT 96	12/6/2018	0+420 LHS	2.12	95.65	5.00	
2			0+460 CL	2.15	96.81	6.00	
3			0+495 RHS	2.15	96.81	6.00	
1	FDT-97	12/6/2018	0+020 LHS	2.12	95.65	5.00	
2			0+070 RHS	2.15	96.81	6.00	
1	FDT98	22/6/2018	0+020 LHS	2.14	96.37	5.00	
2			0+080 CL	2.13	96.14	6.00	
3			0+165 RHS	2.15	96.75	6.00	
Specification Requirement				2.220	>95	OMC <6.60	
SMEC-Brisbane-AQUA-CEMAT-BDA Approved By C.S.E  Test Checked by A.C.S.E Consultant Reps				CTCE-KALIKA J/V Submitted by Project Manager Test Conducted by Q.C Manager Contractors Reps 			





SECONDARY TOWNS INTEGRATED URABAN ENVIRONMENTAL IMPROVEMENT PROJECT													STIUEIP			
Biratnagar Sub-Metropolitant City																
MONTHLY Test Result Summary Sheet For The Month of JUNE 2018																
SUB BASE (Process Control)																
According to Part 2.Section 6A-Technical Specifacations&DOR Specifacation Section 1201(3)C Physical Requirement													P.G-1			
SN No	LAB Ref NO	Date Tested	Location/ Chainage/Station	Grading sieve size (mm)								Lab.	Soaked	Lab.	Remarks	
				(% passing by weight)								MDD	CBR	OMC		
				63	37.5	20	10	5	2.360	1.18	0.075	(g/cc)	(%)	(%)		
1	321	7/6/2018	WWTP JATUWA INNER ROAD	100	84.34	70.65	56.28	45.85	32.56	23.76	6.73	2.220	48.00	7.60		
2	322	7/6/2018	WWTP JATUWA INNER ROAD	100	86.48	73.07	55.79	46.41	30.02	21.11	5.77					
3	323	7/6/2018	WWTP JATUWA INNER ROAD	100	86.78	73.11	56.55	46.71	30.63	21.50	5.40					
4	324	7/6/2018	WWTP JATUWA INNER ROAD	100	87.01	72.19	55.99	46.82	31.09	22.03	6.44					
5	325	17/6/2018	WWTP JATUWA INNER ROAD	100	88.22	73.39	58.00	48.02	31.93	22.86	6.68					
6	326	17/6/2018	WWTP JATUWA INNER ROAD	100	87.94	73.55	58.30	48.75	32.82	22.63	6.36	2.220	48.00	7.60		
7	327	17/6/2018	WWTP JATUWA INNER ROAD	100	88.66	74.81	60.48	50.40	33.65	24.19	6.03					
8	328	26/6/2018	WWTP JATUWA INNER ROAD	100	87.52	73.86	57.58	47.18	31.78	22.40	5.90	2.220	48.00	7.60		
9	329	26/6/2018	WWTP JATUWA INNER ROAD	100	87.99	73.39	56.57	45.82	30.95	22.20	5.23					
10	330	26/6/2018	WWTP JATUWA INNER ROAD	100	90.11	75.64	58.15	47.20	32.16	23.41	5.99					
				100	65-95	50-85	40-75	30-60	20-45	15-37	4 to 15		≥ 30			
SMEC-Brisbane-AQUA-CEMAT-BDA											CTCE-KALIKA J/V					
Approved by C.S.E 											Submit by Project Manager					
Test Checked by A.C.S.E											Test Conducted by Q.C Manager					
Consultant Reps											Consultant Reps 					
																



SECONDARY TOWNS INTEGRATED URABAN ENVIRONMENTAL IMPROVEMENT PROJECT																				
Biratnagar Sub-Metropolitant City																				
MONTHLY Test Result Summary Sheet For The Month of JUNE 2018																				
Graded Crushed Stone Base Course (Process Control)																	P.G-1			
STANDARD SPECIFICATION FOR ROAD AND BRIDGE WORKS SECTION 1200 Table 12.3 Physical Requirement of Graded Crushed Stone Base																				
SN NO	LAB REF No	Date Tested	Location/ Chainage	Grading sieve size (mm)								FI	CR Ratio	LAA	AIV	SSS 5 cycle	Soaked CBR	Lab. MDD (g/cc)	Lab. OMC (%)	Remarks
				(% passing by weight)																
				40	31.5	20	10	4.75	2.36	0.60	0.075									
1	129	11/6/2018	WWTP Inner Road	100	94.4	82.8	62.3	42.8	30.3	15.6	5.9	17.33	85.8	34.20	19.14	1.64	95	2.320	6.00	
2	130	11/6/2018	WWTP Inner Road	100	94.0	82.3	62.2	44.2	31.8	16.8	6.3	17.95	84.7							
3	131	11/6/2018	WWTP Inner Road	100	93.5	81.2	61.4	46.8	33.3	16.8	6.6	18.23	86.2							
4	132	21/6/2018	WWTP Inner Road	100	94.0	81.1	61.1	46.6	33.6	18.6	6.8	17.61	85.7	34.32	21.43	1.84				
5	133	21/6/2018	WWTP Inner Road	100	94.6	81.5	61.6	46.8	33.6	17.1	5.4	17.49	85.5							
6	134	28/6/2018	WWTP Inner Road	100	93.5	79.3	59.3	44.1	30.4	16.1	5.9	19.16	85.3	34.40	20.57	2.12				
7	135	28/6/2018	WWTP Inner Road	100	93.4	79.4	60.2	45.4	31.9	15.8	5.9	19.67	85.2	34.44	20.50	1.80				
<b>Specifacation Limits</b>				100	85-100	62-92	40-70	26-55	21-53	12 to 28	2 to 10	≤ 25	≥ 80	≤ 35	≤ 25	Max 12%	≥ 80			
SMEC-Brisbane-AQUA-CEMAT-BDA Approved by C.S.E Test Checked by A.C.S.E Consultant Reps											CTCE-KALIKA J/V Submit by Project Manager Test Conducted by Q.C Manager Consultant Reps									



## **ANNEX-4:**

### **Contractor's Progress Report for **June, 2018****



**Government of Nepal**  
**Biratnagar Metropolitan City, Biratnagar, Nepal**  
**Secondary Towns Integrated Urban Environment Improvement Project**  
**(STIUEIP)**  
**Project Implementation Unit (PIU)**  
**Biratnagar, Nepal**

**Project Directorate (ADB)**

**Sewerage and Drainage Network, Wastewater Treatment Plant, and Road and Lanes Improvement Subproject**  
**STIUEIP/W/BRT/ICB-01**

**Monthly Progress Report –55**

**June 2018**



**Consultants:**



in association with  
 Brisbane City Enterprise Pty Ltd – Australia  
 AQUA Consultant and Associates Ltd – Bangladesh  
 Building Design Authority – Nepal  
 CENIAT Consultants – Nepal

**Submitted by:**

**CTCE/KALIKA JOINT VENTURE**

Address: Kalika tower-6<sup>th</sup> floor, Baluwatar, Kathmandu, Nepal, Tel: 01-4439152, 4439153, 4439154, Fax: 01-4439155.  
 E-mail: [info@kalikagroup.com](mailto:info@kalikagroup.com), Site Office: Katakari Tel. 9852024596 E-mail: [kalikabrt@gmail.com](mailto:kalikabrt@gmail.com)





---

**Progress Report No. 55****June 2018**

---

**TABLE OF CONTENTS**

1. Introduction
2. Project Component
3. Salient Feature
4. Scope of Work
5. Physical Progress (Achievement in up to this Month)
  - a. Storm Drainage and Road Side Drain
  - b. Sewerage
  - c. Road and lane
  - d. Waste Water Treatment Plant
  - e. Production of Precast Slab at yard
  - f. Production of precast chamber element at yard
  - g. Hume pipe Production
6. Financial Progress and Cash Flow
7. Details of Safeguard Activities
8. Key Issues and Remarks
9. Resource Plan
  - a. Details of Contractor's Personnel's at site
  - b. Equipment's at Site
  - c. Material at Site
10. Conclusion

**ANNEX**

- i. Organization Chart
- ii. Site Photographs

Contractor: CTCE-KALIKA J.V.  
Site Office: Katahari, Judi



## 1. INTRODUCTION

Secondary Towns Integrated Urban Environmental Improvement Project (STIUEIP), Department of Urban Development and Building Construction (DUDBC), under the Ministry of Urban Development (MUD) through the Government of Nepal (GoN) has received the loan from Asian Development Bank (ADB) Loan 2650-NEP. STIUEIP includes construction of Sewerage and Drainage Network, Wastewater Treatment Plant, Road and Lanes Improvement and additional of road side drain & water supply work. The main purpose of this project is to fascinate with better improvement of greenery urban city.

## 2. PROJECT COMPONENTS

The Town Integrated Urban Environmental Improvement Project (STIUEIP) consists of following Sub-Project Components:

- **Drainage Network**  
The main aim of drainage network is to drain out storm water to the river side during the monsoon season and minimized the water pounding in the city
- **Sewerage Network**  
Management of household sewerage project to the treatment plant in connection with chambers, manhole and pipes
- **Wastewater Treatment Plant Subproject**  
Treatment of sewer product in plant located at Jatuwa. The treated water is drain out to Singhiya river and solid waste project used as fertilizer in farming.
- **Road and Lanes Improvement Subproject**  
Existing road sections at different part of Biratnagar will be upgraded by extending road width and providing footpath.
- **Road Side Drain and Water Supply Network (Additional)**  
Road side drain and water supply network is addition of scope of work in this project. Road side drain is proposed to discharge the rain water. Whereas water supply work is for relocation of existing water pipe lines to appropriate location as well as repair of damaged pipe lines during construction

Contractor: CTCE-KALIKA J.V.  
Site Office: Katakari, Judi



### 3. SALIENT FEATURE

A. General Features	
Employer	Government of Nepal(GoN), Ministry of Urban Development Department of Urban Development and Building Construction
Funded By	Asian Development Bank & Government of Nepal
Project	Biratnagar Metropolitan City Secondary Towns Integrated Urban Environmental Improvement Project(STIUEIP)
Contract No.	STIUEIP/W/BRT/ICB-01
Location	Biratnagar Metropolitan City
Consultant	SMEC-Brisbane-AQUA-BDA-CEMAT
Contractor	CTCE-KALIKA JV.
Commencement Date	December 8th, 2013
Original Completion Date	25 May 2016
Revised Completion Date after EOT-02	2 July 2017
Revised Completion Date after EOT-04	30 June 2017
Original Contract Period	900 Days
Original Contract amount with PS & VAT	NRs 2,391,332,117.06
Revised Contract amount after VO # 04. with PS & VAT	NRs 2,956,290,542.71

Contractor: CTCE-KALIKA J.V.  
Site Office: Katakari, Judi



## 4. SCOPE OF WORKS

The activities to be undertaken according to the Contract Agreement are as follows:

- a. To carry out all necessary topographic surveys, soils investigations, laboratory analysis or related investigations where necessary to supplement the data provided by the Employer.
- b. To prepare working drawings for all elements of the Works.
- c. To undertake all steps necessary for upgrading of roads and bridges, all related to access to the Site, or other related matters, where his opinion differ significantly from
- d. Preparation of stockyards for pipes, fittings and other materials and equipment.
- e. To take all steps necessary for the temporary or permanent diversion of services and the maintenance of services during the execution of the Works, including diversion of overhead with underground power lines, telephone ducts, water supply mains and distribution lines (pipes), sewers and other underground services as required along the route of the pipelines.
- f. To supply all pipes, valves, fittings and other materials and equipment required for construction of the Works. The Contractor's supply items may include manufacture, collection, transportation and delivery to Site. The Contractor will be responsible for ensuring that all procedures are adequately covered and that the materials fully confirm to the Contract requirements. These responsibilities will include all necessary charges or dues related to insurance, freight, taxes (including customs and excise duties, surcharges etc.) and all testing and inspections for quality control.
- g. To provide all necessary staff (including civil engineers, specialists, administrators, site supervision personnel) and workmen (including all necessary specialists, operators, tradesmen, artisans etc. in addition to semi-skilled and unskilled workers) necessary for execution of the Works through to completion.
- h. To provide all equipment, machinery, tools etc. and related spares maintenance and consumables necessary for implementation of the Works.
- i. To provide all site offices, stores, workshops and facilities necessary for use by the Employer, Engineer and support staff and for the Contractor himself and his supporting staff.
- j. To undertake all operations necessary to complete the Works. These operations shall include: excavation, provision, haulage and installation of suitable bedding and backfill material and disposal of surplus excavated material; distribution, laying adjoining of pipes; installation of all special pipework, valves etc. and construction of all related concrete or other activities together with all testing and disinfection of completed Works. The Contractor's attention is drawn to the restricted working space between Rajbangsi Chowk to Rani, Biratnagar where the sewer pipes, drains and road/lane is to be laid in a narrow road. In this section work in addition to that associated with the trunk main, will include but not be limited to, removal and replacement of a sewer laid in the road and reinstatement of road surface.
- k. To liaise with other contractors on the site and to ensure harmonious co-operation with them so that conflicts are avoided and areas of common interest, constructional interface or potential overlaps are addressed without cost to the Employer or delays in completion.
- l. To prepare documentary records of the Works in the form of "as-built" drawings and GIS data, schedules etc., and to train staff of the Employer in the procedures for laying pipes, valves and fittings.
- m. All the above activities shall be performed in a professional way and with good engineering and/or constructional practice. Upon completion of the Works the scheme shall be fully operational with minimum disruption or inconvenience to interested parties, including land owners, and there shall be no outstanding matters requiring attention.

Contractor: CTCE-KALIKA J.V.  
Site Office: Katakahi, Judi



Progress Report No. 55

June 2018

## 5. PHYSICAL PROGRESS (ACHIEVEMENT TILL THE MONTH)

### A. STORM WATER DRAIN AND ROAD SIDE DRAIN SUB-PROJECT (WORK PROGRESS TILL THE DATE)

SN	Location	Final Proposed Length	Up to previous (m)	This Month	Total To Date	Progress %
1	B1	3848	3848		3848	100%
2	B2	4374	4374		4374	100%
3	B3	3463	3463		3463	100%
4	S5	1201	1201		1201	100%
5	S9	2930	2930		2930	100%
6	S11	1552.6	1552.6		1552.6	100%
7	S13	4864	4864		4864	100%
8	CN2	2197.3	2197.3		2197.3	100%
9	CN3	2238.15	2238.15		2238.15	100%
10	Rani	6596.28	6596.28		6596.28	100%
11	A1	1328.5	1328.5		1328.5	100%
	<b>Total</b>	<b>34592.83</b>	<b>34592.83</b>		<b>34592.83</b>	<b>100%</b>

Contractor: CTCE-KALIKA J.V.  
Site Office: Katakari, Judi





Progress Report No. 55

June 2018

**6.Physical Progress in Road Side Drains:**

SN	Location	Total Length(m)	Progress		Total to Date(m)	Progress(%)
			Up to Previous(m)	This Month(m)		
1	R2	6840	6840		6840	100.00%
2	R3	3044	3044		3044	100.00%
3	R4	933.3	933.3		933.3	100.00%
4	R5	2136	2136		2136	100.00%
5	R6	1600	1448	147	1595	99.69%
6	R7	825	825		825	100.00%
7	R8	1267.1	1267.1		1267.1	100.00%
8	R9D	232	232		232	100.00%
9	R13	433.85	433.85		433.85	100.00%
10	R16	1160	1160		1160	100.00%
11	R21	2420	2420		2420	100.00%
12	R22	718	718		718	100.00%
13	R24	784	780	4	784	100.00%
14	R25	1216	1180	36	1216	100.00%
15	R26	1240	1240		1240	100.00%
16	R27	1971	1954	17	1971	100.00%
17	R28	908.35	908.35		908.35	100.00%
18	R29	1885.1	1855.1	15	1870.1	99.20%
19	R30	600	600		600	100.00%
20	R31	374	374		374	100.00%
21	R32	450	450		450	100.00%
22	R37	1570	1570		1570	100.00%
23	R64	120	120		120	100.00%
24	R78	82	82		82	100.00%
25	R107	315	315		315	100.00%
26	R108	190	190		190	100.00%
27	R109	355	355		355	100.00%
28	T2L18O	268	268		268	100.00%
29	T3L26E	48	48		48	100.00%
30	T3L19R	350	350		350	100.00%
31	T2L19P	468.05	468.05		468.05	100.00%
32	T2L19U	162	162		162	100.00%
33	T3L28	145	145		145	100.00%
34	R42	281.6	281.6		281.6	100.00%
35	R104	590.7	590.7		590.7	100.00%
36	R73	468.9	468.9		468.9	100.00%
37	T2-L26F	110	110		110	100.00%
	<b>Total</b>	<b>36561.95</b>	<b>36322.95</b>	<b>219</b>	<b>36541.95</b>	<b>99.95%</b>

Contractor: CTCE-KALIKA J.V.  
Site Office: Katakahi, Judi



Progress Report No. 55

June 2018

**B. SEWERAGE SUB-PROJECT (WORK PROGRESS TILL THE DATE)**

Table 12: Physical progress in sewer line: June 2018

S.N.	Location	As per VO-3		Upto Previous Month		This month		Update work		% work		Remarks
		Distance	Manhole No	Distance	Manhole No	Distance	Manhole No	Distance	Manhole No	Distance	Manhole No	
1	HDPE (T1)	3817.100	127	3817.00	127.00			3817.000	127			
2	HDPE (T2)	13595.400	485	13595.40	485.00			13595.400	485			
3	HDPE (T3)	6947.100	258	6857.10	256.00			6857.100	256			
4	HDPE (T4)	117.300	3	117.00	3.00			117.000	3			
5	<b>Sub Total (HDPE)</b>	<b>24476.900</b>	<b>873</b>	<b>24386.500</b>	<b>871</b>	<b>0.000</b>	<b>0</b>	<b>24386.500</b>	<b>871</b>	<b>99.63%</b>	<b>99.77%</b>	
6	Hume pipe(T1)	5026.800	144	5026.80	144.00			5026.800	144			
7	Hume pipe(T2)	9488.000	276	9483.00	276.00			9483.000	276			
8	Hume pipe(T3)	4493.300	136	4478.00	136.00	15.000		4493.000	136			
9	Hume pipe(T4)	183.500	5	183.50	5.00			183.500	5			
10	<b>Sub Total (Hume pipe)</b>	<b>19191.600</b>	<b>561</b>	<b>19171.300</b>	<b>561</b>	<b>15.000</b>	<b>0</b>	<b>19186.300</b>	<b>561</b>	<b>99.97%</b>	<b>100.00%</b>	
11	<b>Total (HDPE + Hume pipe)</b>	<b>43668.500</b>	<b>1434</b>	<b>43557.800</b>	<b>1432</b>	<b>15.000</b>	<b>0</b>	<b>43572.800</b>	<b>1432</b>	<b>99.78%</b>	<b>99.86%</b>	
		90.400		HDPE Pipe (Remaining Quantity)								
		5.300		Hume Pipe (Remaining Quantity)								
		95.700		HDPE Pipe +Hume pipe (Remaining Quantity)								

**B. SEWER INLET & HOUSE CONNECTION (WORK PROGRESS TILL THE DATE)**

SN	Description	Unit	Proposed	Total Upto Previous Month	This Month	Total Up to this Month	Percentage	Remarks
1	Sewer Inlet	Nos.	1855	1764	30	1794	96.7%	
2	House Connection	Nos.	1434	1279	50	1329	92.7%	

**C. ROAD IMPROVEMENT WORKS (WORK PROGRESS TILL THE DATE)**

SN	Description	Unit	Proposed	Total Up to Previous Month	This Month	Total Up to this Month	Remarks
1	Asphalt pavement in R2 Road with access road	Rm		3601	0	3601	
2	Gravel road	Rm		38940	2102	41042	
	<b>Total</b>	<b>RM</b>	<b>44643</b>	<b>42541</b>	<b>2102</b>	<b>44643</b>	<b>100.00%</b>

Contractor: CTCE-KALIKA J.V.  
Site Office: Katahari, Judi



Progress Report No. 55

June 2018

## D.Waste Water Treatment Plant Sub-Project (Work Progress till the date)

Table15: Physical progress in waste water tretment plant(WWTP), Jatuwa, June 2018

Physical progress till June 2018							
S.N.	Description	As per VO-4 Quantity (Nos,m.)	Progress		Update work	%w work	Remarks
			Upto Previous Month	This month			
1	Anaerobic Pond	3	3	0	3	100	
2	Facultative Pond	3	2.62	0.38	3	100.00	
3	River Training Work	600	600	0	600	100	
4	Boundary Wall	1330	1283	0	1283	96.47	
5	Office cum Lab Building	1	1	0	1	100	Painting WIP
6	Workshop Building	1	1	0	1	100	Painting WIP
7	Generator/Changing House	1	1	0	1	100	Painting WIP
8	Sump well & Structure (1-7)	1	0.65	0	0.65	65	Door Window Work WIP & Pump work in Procuement process
9	Sludge Drying Bed	1	0.92	0.08	1	100	Fine Sand & Course Sand filling WIP
10	Road Side Drain	2880	1441.1	1438.9	2880	100.00	
11	Road Works						
	Sub Grade	1500	500	1000	1500	100.00	
	Sub Base	1500	500	1000	1500	100.00	
	Base	1500	500	1000	1500	100.00	
	Asphalt	1500	500		500	33.33	
12	Land Scaping	1	0.5	0.45	0.95	95.00	WIP
13	Gurd House	1	0.9	0.1	1	100.00	Painting WIP

Contractor: CTCE-KALIKA J.V.  
Site Office: Katakari, Judi





Progress Report No. 55

June 2018

E. PRODUCTION OF PRECAST ITEMS FROM SLAB CASTING CONTRACTOR'S YARD, KATAHARI

SN	Description	Unit	Total Up to Previous Month	This Month	Total Up to this Month	Remarks
1	Slab	Rm	129213	4500	133713	
2	Precuts	Rm	11209	0	11209	
3	Kerb stone	Rm	23135		23135	
4	Manhole	Nos	2200	0	2200	
5	Sewer inlet	Nos	2524	0	2524	
6	House chamber	Nos	2287	0	2287	

F. HUME PIPE PRODUCTION FROM HUME PIPE PRODUCTION FACTORY, ITAHARI

SN	1	2	3	4	5	6	7	8	9	10	11
Diameter	200mm	300mm	350mm	400mm	450mm	500mm	600mm	700mm	900mm	1000mm	1600mm
	nos	nos	nos	nos	nos	nos	nos	nos	nos	nos	nos
No of Moulds	38	3	2	2	2	3	8	8	2	4	2
Production Till Previous Month	2123	508	216	370	84	551	963	1296	278	1011	373
This Month Production	0	0	0	0	0	0	0	0	0	0	0
Total Production	2123	528	216	430	84	551	963	1296	278	1011	373

G. Next month program

1. Completion of Outstanding work & Defect Work.
2. Minor reaming work including Dedicated line in WWTP, Jatuwa.
3. Inlet and House Connection laying

Contractor: CTCE-KALIKA J.V.  
Site Office: Katahari, Judi



## FINANCIAL PROGRESS AND CASH FLOW

## Financial Progress

SN	Installment Number	Total Bill Amount With Vat and PS(NRs)	Net Payable Amount (NRs.)	%	Remarks
1	IPC 01		200,940,000.00		Advance Payment 01
2	IPC 02	29,553,479.92	27,853,500.98		IPC 2
3	IPC 03	50,406,775.75	47,507,270.95		IPC 3
4	IPC 04	44,819,505.68	42,241,392.52		IPC 04
5	IPC 05	23,380,168.96	22,035,291.99		IPC 05
6	IPC 06	90,796,339.68	85,573,541.38		IPC 06
7	IPC 07	80,854,600.52	76,203,672.17		IPC 07
8	IPC 08	122,334,488.86	115,297,549.23		IPC 08
9	IPC 09	116,092,187.14	109,414,317.97		IPC 09
10	IPC 10	132,327,417.89	124,715,663.77		IPC 10
11	IPC 11	169,853,829.07	160,083,476.07		IPC 11
12	IPC 12	23,121,515.46	16,931,906.24		IPC 12
13	IPC 13	85,563,926.44	62,658,539.06		IPC 13
14	IPC 14	163,562,505.71	119,776,967.67		IPC 14
15	IPC 15	139,008,112.96	101,795,764.14		IPC 15
16	IPC 16	137,640,413.95	100,794,196.94		IPC 16
17	IPC 17	135,118,714.02	98,947,553.85		IPC 17
18	IPC 18	39,288,088.98	28,770,702.32		IPC 18
19	IPC 19	76081596.87	55,714,620.72		IPC 19
20	IPC 20	74,522,638.96	54,572,994.46		IPC 20
21	IPC 21	152,577,081.94	118,075,775.83		IPC 21
22	IPC 22	140,477,295.40	132,396,742.98		IPC 22
23	IPC 23	66,139,814.38	62,335,311.79		IPC 23
24	IPC 24	110,913,194.49	104,533,231.98		IPC 24
25	IPC 25	169,428,867.45	159,682,959.15		IPC-25
26	IPC-26	129,978,851.94	122,502,192.32		IPC-26
27	IPC-27	65,357,880.77	61,598,356.67		IPC-27

Contractor: CTCE-KALIKA J.V.  
Site Office: Katakari, Judi



## Progress Report No. 55

June 2018

28	IPC-28	84960602.31	80,073,488.03		IPC-28
28	IPC-29	131869397.3	124,355,822.35		IPC-29
29	IPC-30	199717420.9	188,229,250.68		IPC-30
Total amount of Ipc=		2,985,746,714	2,805,612,054		
Deduct PA upto IPC-30		206,555,373.18			
Total amount of IPC without PA		2,779,191,341		94.01%	

## Physical Progress

SN	Installment Number	Total Bill Amount With Vat and PS(NRs)	Net Payable Amount (NRs.)	%	Remarks
1	IPC 01		200,940,000.00		Advance Payment 01
2	IPC 02	29,553,479.92	27,853,500.98		IPC 2
3	IPC 03	50,406,775.75	47,507,270.95		IPC 3
4	IPC 04	44,819,505.68	42,241,392.52		IPC 04
5	IPC 05	23,380,168.96	22,035,291.99		IPC 05
6	IPC 06	90,796,339.68	85,573,541.38		IPC 06
7	IPC 07	80,854,600.52	76,203,672.17		IPC 07
8	IPC 08	122,334,488.86	115,297,549.23		IPC 08
9	IPC 09	116,092,187.14	109,414,317.97		IPC 09
10	IPC 10	132,327,417.89	124,715,663.77		IPC 10
11	IPC 11	169,853,829.07	160,083,476.07		IPC 11
12	IPC 12	23,121,515.46	16,931,906.24		IPC 12
13	IPC 13	85,563,926.44	62,658,539.06		IPC 13
14	IPC 14	163,562,505.71	119,776,967.67		IPC 14
15	IPC 15	139,008,112.96	101,795,764.14		IPC 15
16	IPC 16	137,640,413.95	100,794,196.94		IPC 16
17	IPC 17	135,118,714.02	98,947,553.85		IPC 17
18	IPC 18	39,288,088.98	28,770,702.32		IPC 18
19	IPC 19	76081596.87	55,714,620.72		IPC 19
20	IPC 20	74,522,638.96	54,572,994.46		IPC 20
21	IPC 21	152,577,081.94	118,075,775.83		IPC 21
22	IPC 22	140,477,295.40	132,396,742.98		IPC 22
23	IPC 23	66,139,814.38	62,335,311.79		IPC 23
24	IPC 24	110,913,194.49	104,533,231.98		IPC 24

Contractor: CTCE-KALIKA J.V.  
Site Office: Katahari, Judi



Progress Report No. 55

June 2018

25	IPC-25	169,428,867.45	159,682,959.15		IPC-25
26	IPC-26	129,978,851.94	122,502,192.32		IPC-26
27	IPC-27	65,357,880.77	61,598,356.67		IPC-27
28	IPC-28	84960602.31	80,073,488.03		IPC-28
28	IPC-29	131869397.3	124,355,822.35		IPC-29
29	IPC-30	199717420.9	188,229,250.68		IPC-30
30	WIP	120000000			
<b>Total amount of ipc=</b>		<b>3,105,746,714</b>	<b>2,805,612,054</b>		
<b>Deduct PA upto IPC-30</b>		<b>206,555,373.18</b>			
<b>Total amount of IPC without PA</b>		<b>2,899,191,341</b>		<b>98.07%</b>	

## 7. DETAILS OF SAFEGUARD ACTIVITIES

Contractor's is fascinating to apply safety measure at site during construction phase. Safety board, Diversion board, safety barriers, personnel's protection equipment to worker, spraying of water to minimize dust pollution.

## 8. KEY ISSUES AND REMARKS

Following issues were raised in this month

- Submitted Claim No.01 to 07 has not addressed up to this month.

## 9. Mobilized Resource

### A. Details of Contractor's Personnel at Site

SN	Contractor's Personnel's	Position
1	Ujjwal Prasai	Project Manager
2	Mahesh Subedi	Sr. Engineer
3	Bishesh Prasai	Sr. Engineer
4	Gaurav Bikram Shah	Engineer
5	Sagar Chand	Engineer
6	Narayan Rijal	Sr. Supervisor
7	Uttar Karki	Supervisor
8	Ajay Rai	Supervisor
9	Yog Raj Kafle	Supervisor
10	Saroj Adhikari	Overseer
11	Sushmita Lepcha	Overseer

Contractor: CTCE-KALIKA J.V.  
Site Office: Katakari, Judi



## Progress Report No. 55

June 2018

12	Sanjay Shrestha	Overseer
13	Prakash Bhattarai	Sub Overseer
14	Sandesh Sunam	Sub Overseer
15	Pritam Sunrait	Sub Overseer
16	Vishwa Bandhu Mainali	Finance Officer
17	Anil Pokharel	Safety In Charge / PRO
18	Sunil Chaudhary	Quality Control Manager
19	Shanker Chaudhary	Lab Technician
20	Dipesh Dahal	Lab Assistant
21	Rabin Pandit	Lab Assistant
22	Mahesh Pandit	Store Keeper
23	Saroj Bhattarai	Store Keeper
24	Sailesh Paudel	Store Keeper
25	Dipendra Karki	Store Assistant
26	Rabin BdrGurung	Store Keeper
27	Dhurba Raj Bhattarai	Store Keeper
28	Nil Prasad Neupane	Store Keeper
29	Ananda Rajbansi	Electrician
30	Ajay Chaudhary	Welder
31	Mechanics	4
32	Plumber	6
33	Light Vehicle Driver	4
34	Tipper Driver	16
35	Water Tanker Driver	5
36	Tractor Driver	15
37	Heavy Equipment operator	32
38	Helper	54
39	Cook (Casting yard and Jatuwa)	8
40	Security Guard (casting yard and Jatuwa)	4
41	Skilled Labor	30
42	Unskilled Labor	60

Contractor: CTCE-KALIKA J.V.  
Site Office: Katakari, Judi





Progress Report No. 55

June 2018

**G. Details of Equipment at Site / Contractor's yard**

	Equipment	Capacity	Nos
<b>A.1</b>	<b><u>Excavators</u></b>		
	Komatsu PC 200 "B" (long boom)	148HP /0.97m <sup>3</sup>	1
	Cat Excavator 320DL "A"	148HP /0.97m <sup>3</sup>	1
<b>A.3</b>	<b><u>Back Hoe Loader</u></b>	92HP/0.30m <sup>3</sup>	9
<b>A.4</b>	<b><u>Grader</u></b>		
	Komatsu GD405A-2	115HP	1
	CAT 140G	115HP	1
<b>A.5</b>	<b><u>Jeep/Pickup</u></b>		
	Pajero-Na2Cha 1086	5 door	1
	Tata Sumo Gold	5 door	2
	Pickup - Ko1Cha 2544	4 door	1
<b>A.6</b>	<b><u>Water Browser</u></b>		
	Water Tanker Na1Kha 2595	Up to 12KL	1
	Water Tanker Na1Kha 101	Up to 12KL	1
	Tractor Water Tanker	Up to 4KL	3
<b>A.7</b>	<b><u>Motorbikes</u></b>		
	Shine Bike Ko 17 Pa-3394	125cc	1
	Shine Bike Ko 17 Pa-3395	125cc	1
	Shine Bike Ko 20 Pa-215	125cc	1
	Shine Bike Ko 20 Pa-230	125cc	1
	Shine Bike Ko 20 Pa-1155	125cc	1
	Shine Bike Ko 20 Pa-1167	125cc	1
	Shine Bike Ko 11 Pa-8157	125cc	1

Contractor: CTCE-KALIKA J.V.  
Site Office: Katahari, Judi



Progress Report No. 55			June 2018
	Honda Shine Ve 1 Pa 8845	125cc	1
	Glamor (Ko 24 3802	100 cc	1
	Glamor (Ko 24 3804)	100 cc	1
<b>A.8</b>	<b><u>Tractors</u></b>		
	Tractor Ko 1Ta 5868	85HP/ Hydraulic	1
	Tractor Na 3 7936	85HP/ Hydraulic	1
	Tractor Ko1Ta 4145	85HP/ Hydraulic	1
	Tractor Ko 2 Ta 4065	85HP/ Hydraulic	1
	Tractor Ko1Ta 7655	85HP/ Hydraulic	1
	Tractor Ko1Ta 8882	85HP/ Hydraulic	1
	Tractor Na1Ta 6204	85HP/ Hydraulic	1
	Tractor Ko1Ta 1755	85HP/ Hydraulic	1
	Tractor Ko1Ta 3440	85HP/ Hydraulic	1
<b>A.9</b>	<b><u>Roller &amp; Compactor</u></b>		
	JCB Roller		1
	Case Compactor 450 DX	Upto 5Ton	1
	Single Drum Hand Roller [Honda GX160]	4Kw	2
	Monkey Jumper[Honda GX 160]	6.5Ps/10000N	2
	Plate Compactor		3
	Heavy Duty Tapping Rammer	4.4km	1
<b>A.10</b>	<b><u>Tipper Truck</u></b>		
	AMW Tipper-Na1Ka 3489	150HP/10m3	1
	AMW Tipper-Na1Ka 3494	150HP/10m3	1
	AMW Tipper-Na1Ka 3491	150HP/10m3	1
	AMW Tipper-Na1Ka 3493	150HP/10m3	1
<b>B</b>	<b><u>Bituminous Plant/Crane &amp; Others</u></b>		
	Asphalt Hot Mix Plant Set -Keshar DM45	40 to 60 Ton/Hr	1
	Asphalt Paver Machine-Na1Ka 3135	105HP	1
	Mobile Unique Crane with Teller Ba1Ka 4423	10Ton	1
	JCB Hydra Lift all	15Ton	1

Contractor: CTCE-KALIKA J.V.  
Site Office: Katakari, Judi



## Progress Report No. 55

June 2018

C	<u>Concreting Unit</u>		
	Manual Mixture Machine[Everest]		10
	Manual Mixture Machine [Ashoka]		2
	Hydraulic Mixture Machine[Universal]		3
	Hydraulic Mixture Machine[Kirloskar]		2
	Bar Bending Machine Set	4Ton/Hrs	3
	Bar Cutter Machine Set	4Ton/Hrs	3
	Concrete Vibrator with Needle	Diesel/3PHs/Pneumatic	10
D	<u>Work Shop Equipment and Tools</u>		
	Generator-Kirloskar/Jackson	20Kva	2
	Generator [Kirloskar]	125Kva	1
	Generator	62.5Kva	1
	Generator[Honda]	2.5Kva	1
	Generator[Super]	5KVA	1
	Generator[Lutian] [LT3600]	2.5KVA	1
	Welding Machine Set	4Ton/Hrs	1
	Concrete Cutter		1
	Kerb Stone Machine Set	41+00	
	Concrete Cutter		1
	Water Tank (Joined with Tractor)	10Kl	1
E	<u>Survey Equipment</u>		
	Total Station		2
	Level Machine		15
F	<u>Lab Equipment</u>		
			1 Set

## 10. Conclusion

The total progress up to this month was 98.07%. But we would complete 99.5% of total BOQ quantity works. The remaining works are minor finishing civil work and Provisional sum of Sewer cleaning equipment supply & Dedicated line. Even these item we also inform you that we have completed procurement work.

Contractor: CTCE-KALIKA I.V.  
Site Office: Katahari, Judi





---

Progress Report No. 55

June 2018

---

# ANNEX

Page | xviii

Contractor: CTCE-KALIKA J.V.  
Site Office: Katahari, Judi





Road Maintenance at R-4



House connection at Dharambad Road



Placing of Sewer Inlet



Excavation for house connection





Placing of panels above the Bar Screen Chamber



Distribution of gravel in Sludge Drying Bed



Catchpit Construction in WWTP



Pipe Valve Fitting in Pipe Inspection Chamber

Progress Report No. 55

June 2018

Sewer cleaning work using jetting machine

Laying of Hume pipe

Humepipe installation using shoring

Disposal of silt by suction machine

SN	Location	Length	Total Length(m)	Progress		Total to Date(m)	Prog
				Up to Previous(m)	This Month(m)		
1	R2	3240	6840	6840		6840.00	
2	R3	2233	2993	2964		2964.00	
3	R4	1246	2212	933.3		933.30	
4	R5	1068	2136	2136		2136.00	
5	R6	1280	2560	0		0.00	
6	R7	485	615	825		825.00	
7	R8	370	740	1267.1		1267.10	
8	R9D	116	232	232		232.00	
9	R13	220	440	433.85		433.85	
10	R16	580	1160	1160		1160.00	
11	R21	2420	2420	2420		2420.00	
12	R22	359	718	718		718.00	

Page | xxi

Contractor: CTCE-KALIKA J.V.  
Site Office: Katahari, Judi

