



In association with

Brisbane City Enterprise Pty Ltd, Australia
AQUA Consultant and Associates Ltd, Bangladesh
Building Design Authority, Nepal
CEMAT Consultants, Nepal

Monthly Progress Report (April, 2015)

Secondary Towns Integrated Urban Environmental Improvement Project (STIUEIP), Biratnagar, Nepal

15 May 2015



Biratnagar Sub-Metropolitan City, Nepal

Project Name:	Secondary Towns Integrated Urban Environmental Improvement Project (STIUEIP)
Project Number:	56064023
Report for:	Biratnagar Sub Metropolitan City, Nepal

PREPARATION, REVIEW and AUTHORISATION

Revision	Date	Prepared by	Reviewed by	Approved for Issue by
	15 May 2015	DSC		

ISSUE REGISTER

Distribution List	Date Issued	Number of Copies
Biratnagar Sub Metropolitan City, Nepal:	15 May 2015	3
SMEC staff:		1
Associates:		1
Nepal Office Library (SMEC office location):		1
SMEC Project File:		1

SMEC COMPANY DETAILS

SMEC International Pty Ltd
South Asia Regional Office, H-372, R-6, DOHS Baridhara, Dhaka, Bangladesh

Tel: +8802 841 3571

Fax: +8802 882 7545

Email: smec@smec.comwww.smec.com

The information within this document is and shall remain the property of SMEC International Pty Ltd.



1. Salient Feature of Contract Package: STIUEIP/W/BRT/ICB-01	4
2 INTRODUCTION / BACKGROUND	5
3. SUB-PROJECTCOMPONENTS	5
3.1 Sewer Lines	5
3.2 Storm Water Drains	6
3.3 Waste water Treatment Plants	7
3.4 Roads and Lanes	8
3.5 Environmental Aspect	8
3.6 Social Aspect	9
3.7 Financial Plan	10
3.8 Disbursement Records in Construction	10
4. OBJECTIVES AND SCOPE OF WORKS	10
4.1 Objectives	10
4.2 Scope of Works	11
5 PROGRESS OF SUB-PROJECT COMPONENT	11
5.1 Storm Water Drains	11
5.2 Sewer Lines	12
5.3 Waste Water Treatment Plant	12
5.4 Road and Lanes Improvement Works	12
5.5 Construction Materials	12
5.6 Construction Material Testing Lab	12
5.7 Physical Progress till end of March 2015	12
6 SUMMARY OF ACTIVITIES CARRIED OUT UP TO PREVIOUS MONTHS	14
6.1 Organization and Staffing	14
6.2 Inception Report	15
6.3 Conceptual Catchment Plan and Design Criteria	15
6.4 Survey	15
6.5 Design	15
6.6 Preconstruction Activity	15
6.7 Draft Report	15
6.8 Final Report	15
6.9 Consultant's Activities in Construction Phase	16
6.10 Key Dates	17
7 DETAILS OF ACTIVITIES CARRIED OUT IN THIS MONTH	18
7.1 Physical Progress in This Month	18
7.2 Cumulative Progress (S Curve)	22
8 DETAILS OF SAFEGUARD ACTIVITIES (SOCIAL, ENVIRONMENTAL AND RESETTLEMENT ACTIVITIES AND ISSUES)	23
8.1 Social Issues	23
8.1.1 Operational Guidelines for Community Mobilization and Implementation of CDP	23

9 KEY ISSUES AND REMARKS / REASONS FOR DEVIATION (IF ANY) AFFECTING PROGRESS.....	25
10 WORK PLAN FOR THE NEXT MONTH	25
Annex-1: Work Schedule and Progress.....	26
Annex-2: Photographs.....	29
Annex-3: Financial Status (Details of submitted invoices and receipt of payments with key dates).....	36
Annex-4: Status of actions agreed with previous ADB loan review mission	40
Annex-5: Professional input as per contract vs input used till this reporting period	40
Annex-6: Minutes of Meeting.....	44
Annex-7: A Laboratory Test Results of February 2015.....	45
Annex-8: Contractor's Progress Report.....	46

List of Tables:

Table 1: Proposed Sewer Lines in BMSC	6
Table 2: Proposed Storm Water Drains in BMSC.....	6
Table 3: Proposed Waste Water Components	7
Table 4: Proposed Roads	8
Table 5: Disbursement Records in Construction to date	10
Table 6: Plan Vs Actual Progress.....	13
Table 7: Agency-wise Financial Contribution	16
Table 8: Consultant's Staff at Project Site	16
Table 9: Key Dates	17
Table 10: Physical Progress in Storm Water Drains.....	18
Table 11: Physical Progress in Sewer Lines	18
Table 12: Physical Progress in Manholes	19
Table 13: Physical Progress in Roads and Lanes.....	19
Table 14: Physical Progress in Waste Water Component	19
Table 15: Physical Progress in Precast Concrete Works	20
Table 16: Physical Progress of Hume Pipe	20
Table 17: Contractor's Key Staff	20
Table 18: Contractor's Equipment	21

List of Figures:

Figure 1: Plan Vs Actual Progress till end of March 2015.....	13
Figure 2: Organization and Staffing	14

1. SALIENT FEATURE of Contract Package: STIUEIP/W/BRT/ICB-01

General Features	
Name of Project	Secondary Towns Integrated Urban Environmental Improvement Project (STIUEIP)
Executing Agency	Government of Nepal, Ministry of Urban Development Department of Urban Development and Building Construction (DUDBC)
Implementing Agency	Biratnagar Sub-Metropolitan City
Funded By	Asian Development Bank & Government of Nepal
Package	Sewerage and Drainage Network, Wastewater Treatment Plant and Road and Lanes Improvement Sub Project
Contract No.	STIUEIP/W/BRT/ICB-01
Location	Biratnagar Sub-Metropolitan City
Consultant	SMEC in association with Brisbane/AQUA/BDA/CEMAT
Contractor	CTCE-KALIKA Joint Venture
Date of Commencement	8 th December, 2013
Date of Completion	25 th May, 2016
Contract Period	900 days from date of commencement
Time elapsed till April 2015	509 days from date of commencement (56.6%)
Contract amount with Provisional Sum	NRs. 2,119,054,525.90
Add 13%VAT	NRs. 272,278,000.00
Variation Order No 1 with 13% VAT	NRs 99,753,075.60
Total Contract Amount with VAT & PS	NRs. 2,491,085,601.50
Paid Amount of IPC 01	NRs. 209,400,000.00 (Mobilization Advance Payment)
Paid Amount of IPC 09	NRs. 109,414,317.97
Total Paid Amount from IPC 01 to IPC 09	NRs. 735,526,537.19

2 INTRODUCTION / BACKGROUND

1. SMEC International Pty (Australia) in association with Brisbane City Enterprise Pty Ltd (Australia), AQUA Consultant and Associates Ltd (Bangladesh), Building Design Authority (Nepal) and CEMAT Consultants (Nepal) have entered for a Contract of Consulting Services with Secondary Towns Integrated Urban Environmental Improvement Project (STIUEIP), Project Implementation Unit(PIU), Biratnagar Sub metropolitan City on 7th December 2011. This monthly Progress Report of April, 2015 has been submitted to the PIU as per the Work Program proposed in the consultant's technical proposal as well as TOR of the consultant.
2. Secondary Towns Integrated Urban Environmental Improvement Project (STIUEIP), the Department of Urban Development and Building Construction (DUDBC), under the Ministry of Urban Development (MUD) through the Government of Nepal (GoN) has received the loan from Asian Development Bank (ADB) Loan 2650-NEP. As per PAM contribution from GoN is 3.99 million USD, Asian Development Bank (ADB) 18.86 million USD and Biratnagar Sub-metropolitan City (BSMC) 1.99 million USD while contingency is 2.88 million USD for Secondary Town Integrated Urban Environmental Improvement Project (STIUEIP), Biratnagar. The cost sharing has been revised in April, 2013 as: Government of Nepal (GoN) is 5.960 Million USD, Asian Development Bank (ADB) 24.214 Million USD, TDF loan 4.098 Million USD and Biratnagar Sub-metropolitan City (BSMC) 2.980 Million USD and in total **37.252** Million USD.
3. In line with ADB's Strategy 2020 and based on Nepal's fundamental long term needs and on the GoN's priority, the ADB is continuing to support the Government in (i) improving urban infrastructure; improving access to water supply and sanitation (ii) supporting urban environmental improvement (iii) strengthening the operation and management skills of local governments. The proposed project Secondary Towns Integrated Urban Environmental Improvement Project (STIUEIP) is another step forward to promote healthy cities by creating healthier urban environments and was formulated under the PPTA 2010.
 - Contract of consulting services signed on 07 December 2011.
 - Design works commenced on 01 January 2012.
 - Final design works submitted to the Client on March 2013
 - Contract of construction works signed on 02 December 2013
 - Construction works commenced on 08 December 2013
 - Contractor's Work Program (Revision 02) under review 05 December 2014

3. SUB-PROJECT COMPONENTS

3.1 Sewer Lines

4. The prioritized sewer lines for Final Detailed Engineering Report of BSMC are as follows:

Table 1: Proposed Sewer Lines in BSMC

S N.	Description	Unit	Quantity
1	Sewerage Pipe Supply and Installation		62,835.0
	Reinforced Concrete Pipe laying and jointing		15,748.0
	Line T1 (Secondary	m	3,788.0
	Line T2 (Trunk)	m	7,506.0
	Line T3 (Trunk)	m	4,136.0
	Line T4 (Secondary)	m	318.0
	HDPE laying and jointing		47,087.0
	Line T1 (Secondary	m	7,124.0
	Line T2 (Trunk)	m	19,410.0
	Line T3 (Trunk)	m	18,341.0
	Line T4 (Secondary)	m	22,12.0
2	Manhole (Brick / RCC)	no.	2,019
3	Sewer Inlet	no.	3,766.00
4	House connection	no.	5,930.00
5	Reinstatement of Roads	km	64.50

3.2 Storm Water Drains

5. Most of the storm drains (S13, S11, S9, S5, B1, B2, B3, CN2, CN3 and southern parts) have been provisioned as Phase I priority works. The major storm drain outlets as planned are 14 numbers and catchment areas and discharges are respectively 1,324.2 Ha and 73.21 cum/sec.

Table 2: Proposed Storm Water Drains in BSMC

S. No.	Description	Unit	Quantity
A	Storm Drain for Northern Parts		39,379.00
I	Storm Drain Lines	m	25,388
II	Culvert	no	41
III	Outfall	no	15
IV	House Connection Chamber	no	5,930
V	Rain Inlet	no	30
VI	Manhole	no	30

VII	Canal Crossing	no	11
B	Storm Drain for Southern Part		
I	Brick Masonry Drain	m	13,991
II	Cleaning and Maintenance of Existing Drain	m	7,273
III	Culverts	no	38
C	Rehabilitation of Existing Drain		
I	Drain Cover	m	30,467
II	Cleaning and Maintenance of Existing Drain	m	33,601

3.3 Waste Water Treatment Plants

6. The quantity of domestic waste water is calculated using water supply rate at 90 liters per person per day in the design year 2035, out of which 80% is converted into waste water. Maximum quantity of waste water is calculated taking peak factor of 1.99 to 2.5. Minimum quantity of sewage is taken as 30% of the average quantity. Commercial / Institutional / Industrial waste water quantity is calculated as 0.10 LPS/ha. While in filtration quantity is calculated as 0.14 LPS/ha in the design year 2035. The total quantity of commercial / institutional / industrial and infiltration waste water estimated as 237.79 LPS in the design year 2035 which is very large in comparison with domestic waste water quantity of 207.18 LPS. The maximum quantity (peak flow) of waste water in the design year 2035 for both Phase I and Phase II areas is estimated at 650.08LPS. The maximum quantity of the waste water for Phase I areas only is estimated at 213.97 LPS. The capacity of the Phase I WWTP has been adopted as 214LPS. The capacity of the Phase II WWTP will be thus 436LPS. Features of WWTP at Jatuwa are as follows:

Table 3: Proposed Waste Water Components in BSMC

S.N.	Description	Unit	No
	Waste Water Treatment Plant Component		
1	By Pass Chamber	no	1
2	Distribution Chamber	no	1
3	Bar Screen Chamber	no	2
4	Sump well with Pumping Station	no	2
5	Collection Chamber1	no	1
6	Oil & Grease Chamber	no	2
7	CollectionChamber2	no	1
8	Grit Chamber	no	2
9	CollectionChamber3	no	1
10	Anaerobic Pond	no	3
11	Facultative Pond	no	3
12	Collection Chamber4	no	1

13	Outfall Structure	no	1
14	Sludge Drying Bed	no	10
15	Enclosure Chamber Shed	no	1
16	Guard House	no	1
17	Office Cum Lab Building	no	1
18	Workshop Building	no	1
19	Generator / Changing House	no	1
20	Entrance Gate	no	1
21	Boundary wall	m	1,340
22	Shallow Tube Well with water Tank	set	1
23	Landscaping and Plantation works	sqm	99,915
24	Site clearance, grubbing, surface dressing	sqm	99,915
25	Road and Drain Improvement	m	1,440
26	River training works	m	600
27	Electro mechanical works	Set	1
28	Lab Equipment and installation	Set	1

3.4 Roads and Lanes

7. Most of the roads / lanes in Biratnagar are in a poor state due to lack of periodic maintenance, and need improvement, whereas some of the roads are graveled and would benefit from upgrading. In the areas where drainage and sewerage works are proposed there will be significant impact on the existing roads. Almost necessary streets are already constructed and hence the Project has considered on design based on reinstatement, rehabilitation and upgrading of existing roads and lanes.

Table 4: Proposed Roads in BSMC

Description of Item	Quantity
Main Road Improvements (Road from Puspupal Chowk to Bhatta Chowk)	2.5 Km
Reinstatement and Road Improvements (under sewer line installation)	62.0 Km

3.5 Environmental Aspect

8. The project is environmental improvement project and mainly constitutes works on sewerage and drainage improvement works in BSMC besides others. As per ADB guidelines on Environmental Assessment requirements, this project is classified as Environment Category B. According to Environmental Protection Guidelines, 2054BS, First Revised (2055BS) schedule-3, IEE is required for Operations of Sewerage Schemes under Schedule 1.h.2.e (pertaining to Rule 3). The final report on IEE was submitted and MUD had approved the IEE on May14, 2013.

9. Installation of functioning sewers and functioning drainage system including roads / lanes improvement in BSMC does not possess any adverse environmental impacts to its surrounding. In fact, these will greatly enhance the living conditions / hygiene of the inhabitants and facilitate transportation. Nevertheless, it is imperative to look into positive as well as negative impacts of such infrastructure development works in the urban area.
10. DSC has prepared and submitted Environmental Progress Reports (Quarterly) July-September 2014 and October – December 2014 on 15 February 2015. The outstanding quarterly report of Jan-Mar 2015 will be submitted by the end of May 2015.

3.6 Social Aspect

11. Social development component is one of the major components of STIUEIP Biratnagar that comprises with various social development programs and activities executing through community development program (CDP), awareness raising, skill development, health and sanitation etc.

Social Development Specialist (SDS) in Design and Supervision Consultant (DSC) STIUEIP has been deputing to assist Project Implementation Unit (PIU) in effective implementation of social activities to achieve project goal as envisaged by the project.

Monitoring of ongoing social development activities and consultation meetings with community people are the general tasks that has being accomplished as regular basis. SDS in DSC involved in such activities with reporting and reviews of community development programs, alertness in social safeguard issues of project as usual in April 2015.

In this month (24-25 April), a team from ADB Nepal Resident Mission (NRM), Project Coordination Office (PCO) and Project Management Support Consultant (PMSC) visited the project. The team comprised with Ms. Laxmi Sharma (Senior Project Officer / ADB), Mr. Laxmi P. Subedi (Social Safeguard Specialist/ ADB), Mr. Parag Kayastha (Dy. Project Director/ PCO) and Mr. Rajendra Pandit (Social Development Specialist/ PMSC) met all project stakeholders and visited core project activities and community development programs to observe the construction progress and interact with local people and stakeholders.

The visiting team also met to Design and Supervision Consultant (DSC) team members and briefed their objectives to visit. DSC briefed and presented the status of project's social development initiatives in the meeting between ADB visiting team, PIU and Biratnagar Sub Metropolitan City (BSMC) authorities. The objective of the visit as described by the team was to observe the real situation of social safeguard initiatives in the project. The visit also to address some public complains of Biratnagar regarding on the road, drainage construction and sewerage pipe laying works in the project area. It was a social assessment in terms of resettlement compliance, community development programs and social safeguard effectiveness.

As presented by the team the other objective of the visit was to see the scope of future investment, potential programs and preparedness for such perspective/ scopes. The Social Safeguard Specialist of visiting team briefed about their concerns in safeguard policy, communication policy and Grievance Redress & Handling Policy of Asian Development Bank (ADB) in terms of STIUEIP Biratnagar project activities. Mr Subedi (Safeguard

Development Specialist/ ADB NRM) also made aware to project stakeholders on the Accountability Mechanism of ADB in the meeting. In response to the visiting team, the project has to incorporate some issues/ concerns in the next Semi Annual Update of Resettlement Plan and Due Diligence report if needed.

Establishment and functioning of Social Safeguard Desk in PIU is a major milestone of social development aspect which has been effective to address all social/ community development issues and concerns with active initiation of DSC. The sixth meeting of safeguard desk held in this month. The meeting reviewed all ongoing and completed small facilities infrastructure and other activities implemented under Community Development Program (CDP) component of STIUEIP. It provided a common understanding and status information of such infrastructures and activities under CDP program to all safeguard desk members.

The meeting shared the status of skill development trainings regarding to address the demands of people in ward no. 18, Jatuwa. Demand collections are in progress and social mobilisers/ CDP, FriPAD are mobilized for it. Social Development Specialist (SDS) of DSC had visited communities together with PIU and NGO to observe people's demand, consult with people and assess its feasibility. Apart from it, many formal and informal meetings had taken place during this month.

The regular monitoring visits have provided insights of the social development aspects of the project to the DSC. The community development programs are continuing through the Tole Lane Organizations (TLOs) that are almost 130 numbers in 17 wards of BSMC. Prior to the start of such community development activities, DSC has analyzed the data of poor and disadvantaged groups (DAGs) living in the various tole/ clusters identified by the poverty mapping applying participatory tools. Based on the poverty indicators, all details has been documented and shown in the social map. The program area for community development programs has been extended to most poverty stricken area scattered across several wards of the BSMC. The Community Development Program is consisted with meetings, orientation, awareness activities, skill development trainings and health, hygiene and sanitation activities which are conducted and organized by the NGO (FriPAD).

12. DSC has prepared minutes of meeting No 6, please refer to **Annex-6**.

3.7 Financial Plan

13. The Sub project cost will be disbursed in three years starting from FY2013/14 to 2015/16.

It has estimated that 20 percent of the Sub project cost will be disbursed in first year.

Similarly, in second year, 50 percent will be disbursed. Finally, remaining 30 percent of Sub project cost will be disbursed in third year.

3.8 Disbursement Records in Construction

Table 5: Disbursement Record in Construction to Date

S.N.	Description of Payment	Payment Items	Amount in NRs.
1	M/S Prabidhi International	Ditch Cleaning Equipment	3,300,000.00
2	M/S CTCE-Kalika JV	IPC 01	209,400,000.00
3	M/S CTCE-Kalika JV	IPC 02	27,853,500.98
4	M/S CTCE-Kalika JV	IPC 03	47,507,270.95
5	M/S CTCE-Kalika JV	IPC 04	42,241,392.52
6	M/S CTCE-Kalika JV	IPC 05	22,035,291.99
7	M/S CTCE-Kalika JV	IPC 06	85,573,541.38
8	M/S CTCE-Kalika JV	IPC 07	76,203,672.17
9	M/S CTCE-Kalika JV	IPC-08	115,297,549.23
10	M/S CTCE-Kalika JV	IPC-09	109,414,317.97
		Total in NRs.	738,826,537.19

4. OBJECTIVES AND SCOPE OF WORKS

4.1 Objectives

14. The following are the expected physical infrastructure improvement outputs of the project in Biratnagar:
 - Drainage and sewerage systems improved.
 - Urban roads and lanes improved.
15. Reference to the deliverables identified in the Project, indicates that there are a number of deliverables related specifically to the design aspects of the above infrastructure improvements with construction works.

4.2 Scope of Works

16. The scope of works for consultant's services is fairly detailed in the TOR attached with contract Agreement. The main points are summarized below:
 - A. Detailed Design and Procurement Assistance Phase
 1. Surveys verification of Feasibility Studies and GIS Base Maps
 2. Finalization of Design Criteria, Preparation of Manuals, Guidelines and Systems.
 3. Specific design requirements for the sub projects
 - Improvement and development of drainage and sewerage systems
 - Improvement of urban roads and lanes
 4. Project Planning and Management Support to PIU
 5. Detailed Engineering Design
 - B. Construction and Post Construction Management Phase
 1. Construction Management and Contract Administration
 2. Environmental and Social Compliance Monitoring

3. Implementation of Community Development Program, Community Mobilization and GESI Action Plan
4. Capacity Building of the Municipality and Service Providers for Operational Sustainability
- C. Communications, Reporting and Deliverables (Inception Report, Monthly Progress Reports, Interim Report for each of the outputs, Annual Progress Report, Draft Final Report for each of the outputs and Final Report).

5 PROGRESS OF SUB-PROJECT COMPONENTS

5.1 Storm Water Drains

17. The Contractor has not met the target set for storm water drain construction in this month. The works had been affected by less effort observed during this month. The contractor has completed about 27km out of 40km, 67%,

5.2 Sewer Lines

18. The Contractor has submitted to the Consultant monthly programs of March and April 2015 for the sewer line works. The Contractor has completed about 7.6 km out of 63 km (13%) sewer line with HDPE pipes and RCC pipes. The construction of manhole, sewer inlets and house connection chambers are in progress.

The proposal of the precast concrete manholes, sewer inlets and house connection chambers has been submitted for review and approval. A conditional approval in consultation with the Employer has been given to the Contractor to prepare few numbers and to demonstrate at site. If the proposal comes out to be economical, time effective and environmental friendly and structurally strong enough to carry out the function of their respective items, then the Consultant will release for unconditional approval.

Recently, the precast concrete house connection chambers, sewer inlets and manholes are being installed at sites and found to be effective and we are able to open traffic at the shortest possible time and especially where the business center with crowds (in R5 and R65 Roads) are very efficient and effective. This has reduced disturbances to the local people and road users, dumping of construction materials, workers and working for long period. This is found to be environment friendly too. Hence, the adaptation of precast units for sewer lines found to be effective and efficient.

During the site visit of delegate at different time in the construction period from BSMC, PMSC, ADB, PCO, local political representatives, TLO, Executive Director of TDF and the Secretary of Ministry of Urban Development have commended.

The unconditional approval to proceed with production of precast units will be granted within couple of weeks.

5.3 Wastewater Treatment Plant

19. Office cum laboratory building, workshop building and generator / changing house at WWTP, Jatuwa are ongoing at final and finishing stage. The doors and windows are complete. Excavation of anaerobic ponds (3 nos) and facultative ponds (2 nos) had

been already done. One of the facultative ponds has to be excavated. The Contractor had started excavation for sump well but disturbed due to unexpected frequent rain fall in this month.

5.4 Road and Lanes Improvement Works

20. The Contractor has completed the rehabilitation / repair of existing drain of about 6 km in R2 road. The Contractor has shifted more than 142 numbers of electrical poles and 30 numbers of telephone poles. The shifting of the pole was scheduled to complete by 28th Chaitra 2071 (11 April 2015). But still there are number of poles to be shifted. The installation of Kerbs for footpath in is progress.

The sub-grade preparation for widening portion had started in R2 road but now it is stopped due to relocation of water supply pipes from canal crossing to Panitanki.

5.5 Construction Materials

21. The contractor has stocked sufficient construction materials like coarse aggregates, fine aggregates, cement, reinforcement etc at his yard, Katahari. The fabrication of steel moulds for precast units- manholes, sewer inlets and house connection chamber are in progress.

5.6 Construction Material Testing Lab

22. Construction material testing laboratory has been set up at the Contractor's camp at Katahari. The validity of calibration of Lab equipment was until February 2015. Now the Contractor has requested the Nepal Bureau of Standards and Metrology for calibration of the proving rings of different compressive machines and CBR machine. The calibration was done on 2 March 2015 and certified by Nepal Bureau of Standard and Metrology, Kathmandu, Nepal.

Necessary suitability and routine tests for construction materials are being carried out in regular basis. The details of the test results of the month are in summary of Lab test results in Annex-7.

5.7 Physical Progress till end of April 2015

23. The total physical progress achieved till 30 April 2015 is about 26 % whereas the cumulative planned progress till April 2015 is 45%. The progress of the work is lagging behind by 19% compared to the planned works till end of April 2015(based on work scheduled Rev 02).

Table 6: Plan Vs Actual Progress till April 2015

Plan Vs Progress									
Month	Sep-14	Oct-14	Nov-14	Dec-14	Jan-15	Feb-15	Mar-15	Apr-15	May-15
Planned Work (%) Rev 01	0.576	1.416	8.074	9.81	9.883	10.666	10.056	9.725	9.865
Cumulative Planned work (%)	17.098	18.514	26.588	36.398	46.281	56.947	67.003	76.728	86.593
Planned Work (%) Rev 02				4.76	6.07	8.63	8.478	7.724	6.654
Cumulative Planned work (%)				14.04	20.11	28.74	37.22	44.94	51.60
Actual achievement (%)	0.421	0.169	3.305	1.48	1.80	5.00	4.25	3.43	
Cumulative Actual Achievement (%)	5.81	5.98	9.29	10.77	12.57	17.57	21.82	25.25	
Progress to date wrt the revised work plan (%)		(12.53)	(17.30)	(3.27)	(7.54)	(11.17)	(15.40)	(19.70)	

The contractor is lagging behind by 19 % in his own program whereas 56.6 % of the contract period has already been elapsed.



Figure 1: Plan Vs Actual Progress till end of April 2015.

6 SUMMARY OF ACTIVITIES CARRIED OUT UP TO PREVIOUS MONTHS

6.1 Organization and Staffing

The Project has involvement of different organization and the staffing as shown below.

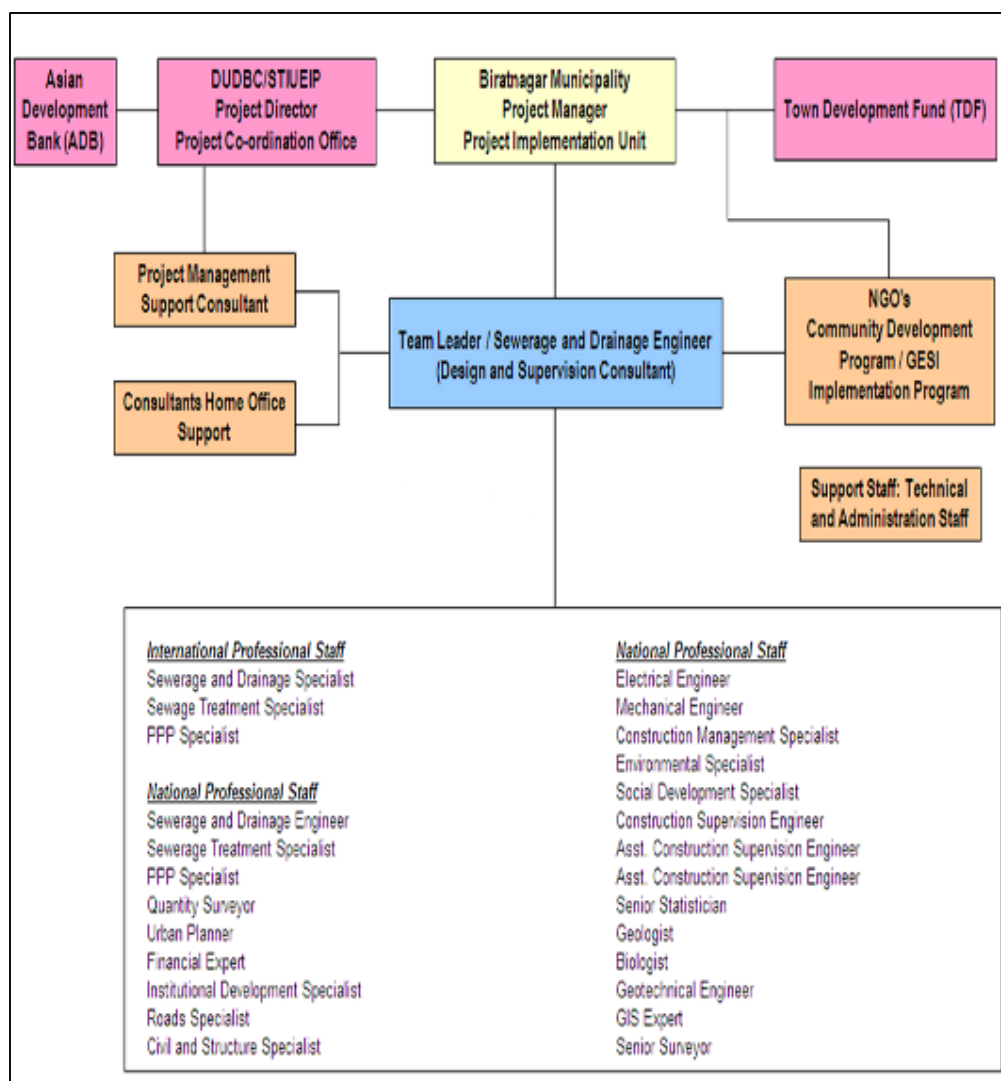


Figure 2: Organization and Staffing of STIUEIP, Biratnagar

6.2 Inception Report

24. The Inception Report was prepared and submitted on 29 February, 2012.

6.3 Conceptual Catchment Plan and Design Criteria

25. The Conceptual Catchment Plan and Design Criteria was prepared and presented in PCO on 30 March, 2012.

6.4 Survey

26. The survey was completed in August, 2012

6.5 Design

27. The design of sewer lines, storm drains, WWTPs and appurtenances and final detailed design and estimates were submitted in March 2013.

28. During construction B2, B3 and S5 alternate design was also submitted. Similarly, CN2 and CN3 were submitted as the community request to reduce the size. The size was reviewed with 1 year return period as per the suggestion made by PMSC during field visit. Minor modifications in drawings are being carried out for considering the site condition and progress.

6.6 Pre-construction Activity

29. After successful completion of one stage two envelope bidding procedure the construction contract for STIUEIP/W/BRT/ICB-01 was signed on December 2, 2013 with M/S CTCE- Kalika JV, Baluwatar, Kathmandu.

6.7 Draft Report

30. The construction/contract timing schedule was needed to incorporate some additional time of about 4-5 months to account for decision re-making process, tender award procedures.

31. The total cost as per PPTA and earlier designs increased drastically and came to be NRs. 7,274,465,206.69 and therefore needs curtailments and revisions had to be made as per suggestions by PIU in final report.

32. The overall works proposed in the PPTA and the area coverage with connection was thus needed to be phased out.

6.8 Final Report

33. The DSC submitted the Final Reports adopting cost reduction exercise by phasing out of the works. The estimated cost of the Project was reduced and kept as NRs. 3, 278, 140, 000, 00 with a lot of exercises in March 2013.

34. The sharing of cost by concerned institutions is as follows

Table 7: Agency-wise Financial Contribution to BSMC

Contributors	Amount (US\$)	Amount (NRs.)	%
Government of Nepal (GoN)	5,960,256	524,502,513	16.00%
Asian Development Bank (ADB)	24,213,539	2,130,791,460	65.00%
Biratnagar Sub-Metropolitan City (BSMC)	2,980,128	262,251,257	8.00%
Town Development Fund (TDF)	4,097,676	360,595,478	11.00%

6.9 Consultant's Activities in Construction Phase

35. The current staffing of the consultant at project site is as follows

Table 8: Consultant's Staff at Project Site, Biratnagar

S. No	Name	Position
1	Mohan Kumar Tuladhar	Team Leader
2	Dil Bahadur Rana	Construction Supervision Engineer
3	Jay Prakash Yadav	Asst. Construction Supervision Engineer-1
4	Bhakta Raj Shakya	Asst. Construction Supervision Engineer-2
5	Bala Ram Mayalu	Social Development Specialist
6	Rajesh Yadav	Junior Engineer-1
7	Sujan Shrestha	Junior Engineer-2
8	Gaurab Muni Bajracharya	Junior Engineer-3
9	Santosh Dahal	Junior Engineer-4
10	Saroj Bhattra	Junior Engineer-5
11	Umesh Bartaula	Office Manager (till 15 April 2015)
12	Santosh Yadav	Office Manager (from 18 April 2015)
13	Ramji Gimire	Driver-1
14	Suman Ghimire	Driver-2
15	Ramila Ghimire	Office Assistant

36. The consultant has been constantly supervising the contractor's work in daily basis. The consultant is mainly focusing in construction management, contract administration and the following activities as listed below:

- i. Daily Construction supervision
- ii. Quality control, cost control and time control
- iii. Measurement and Certification of Interim Payment Certificates (IPC)
- iv. Modification and design of storm drainage and sewer lines, manholes etc.as per site condition and approve working drawings
- v. Supervise construction material testing and sampling
- vi. Monitor Environment Management Plan and its compliance
- vii. Monitor Social safeguard and Resettlement Plan and its compliance
- viii. Meet obligation of reporting requirement – Updated Environmental Progress Report, Updated Resettlement Progress Report, Monthly Progress Report, Semi-Annual Updated Resettlement Progress Report
- ix. Prepare Due Diligence Report of the Project
- x. Prepare Variations Order
- xi. Maintain correspondences with the Employer and the Contractor
- xii. Assist to PIU

6.10 Key Dates

The consultant has noted the following key dates for the month of February 2015

Table 9: Key dates of events /Activities:

S. No	Date	Activities/Events	Remarks
1	24-25 April 2015	Site visit by Mr. Kenichi Yokoyama , Country Director ADB and his team (Ms. Laxmi Sharma and Mr. Laxmi P. Subedi) and a team from PCO, Mr. M R Gelal, Project Director and Mr. P. Kayastha, PDD and Mr. R Pandit from PMSC	Discussion on social aspect and review of construction activities with progress on 24 th April and on 25 th April site visit was continued and just reached at contractor's yard at mid-day, 11:56 am , an earthquake of magnitude 7.6 Richter Scale Gorkha Earthquake occurred and the rest of the program was disturbed. The impact remained few days and again hi by another earthquake on 12 th May 2015

7 DETAILS OF ACTIVITIES CARRIED OUT IN THIS MONTH

7.1 Physical Progress in this month

Table 10: Physical Progress in Storm Water Drains:

Physical Progress till 30th April 2015						
S.N.	Location	Proposed Length (m)	Progress		Total to date (m)	Progress (%)
			Up to Feb 2015 (m)	This Month (m)		
1	B1	3,950.00	3,454.00	46.00	3,500.00	89%
2	B2	3,742.00	2,842.00	166.00	3,008.00	80%
3	B3	3,514.00	3,214.00	100.00	3,314.00	94%
4	S5	740.00	-	-	-	0%
5	S9	3,178.00	660.00	150.00	810.00	25%
6	S11	2,092.00	1,419.00	5.00	1,424.00	68%
7	S13	3,910.00	3,827.00	36.00	3,863.00	99%
8	CN2	2,273.00	1,773.00	358.00	2,131.00	94%
9	CN3	2,170.00	1,370.00	-	1,370.00	63%
10	Rani Area	8,483.00	812.00	839.00	1,651.00	19%
11	R2 (Rehab)	6,000.00	5,930.00	20.00	5,950.00	99%
	Total	40,052.00	25,301.00		27,021.00	67%

Note: There is increment in length of drain in R2 road from Bhatta Chowk to Panitanki, hence total length has been revised from previous monthly progress report.

Table 11: Physical Progress in Sewer Lines: Till 30th April 2015

Physical Progress till 30th April 2015						
S.N.	Location	Proposed Length (m)	Progress		Total to date (m)	Progress (%)
			Up to March 2015 (m)	This Month (m)		
1	T1	10,912		-		0%
2	T2	27,128	3,860.00	463.00	4,323.00	16%
3	T3	23,070	3,543.00	125.00	3,668.00	16%
4	T4	2,530		-		0%
	Total	63,640	7,403.00		7,991.00	13%

Table 12: Physical Progress in Manholes: Till 30th April 2015

S.N.	Description	Progress		Total to date (m)
		Up to March 2015 (m)	This Month (m)	
1	House Connection Chambers	35.00	61.00	96.00
2	Sewer Inlet	113.00	85.00	198.00
3	Manholes	190.00	20.00	210.00

Table 13: Physical Progress in Roads and Lanes: Till 30th April 2015

S.N.	Location	Proposed Length (km)	Progress		Total to date (m)	Progress (%)
			Up to March Month (m)	This Month (m)		
1	T1, T2,T3,T4 and R2	65.0	-	0		Installation of Kerbs /drain covers in progress. Sub-grade was disturbed due to relocation of water supply pipes.
	Total	65.0				

Table 14: Physical Progress in Waste Water Component at WWTP, Jatuwa:

S.N.	Location	Description	Completed Items to Date	Progress in %
1	Jatuwa	Excavation of Anaerobic Pond	3 nos	
2	Jatuwa	Excavation of Facultative Pond	2 nos	
3	Jatuwa	River Training Work	480 m	
4	Jatuwa	Boundary Wall	580 m	
5	Jatuwa	Office Cum Lab Building		Electric works completed.
6	Jatuwa	Workshop Building		Electric works completed.
7	Jatuwa	Generator / Changing House		Electric works completed.

Table 15: Physical Progress of Precast Concrete Works: Till 30th April 2015

S.N.	Location	Description	Up to March 2015	This Month	Total to date	Remarks
1	Katahari	Precast Slab	22,003	1,800	23,803	Corrected to previous month
2	Katahari	Precuts	3,673	180	3,853	Corrected to previous month
3	Katahari	Kerb Stone	5,812	0	5,812	Corrected to previous month

Table 16: Physical Progress of Hume Pipe (NP3): Production Detail

S.N.	Diameter (mm)	Pipes Required	Up to previous month	This Month	Total to date	Pipes to produce (Balance)	Remarks
1	200		1,562	0	1,562		
2	300		140	12	152		
3	350		136	30	166		
4	400		167	32	199		
5	450		89	22	111		
6	500		203	45	248		
7	600		665	49	714		
8	700		827	120	947		
9	900		218	45	267		
10	1000		497	70	567		
11	1600		205	32	237		
	Total		4,709	457	5,166		

Contractor's Manpower:**Table 17: Contractor's key staffs:**

Designation	No	Remarks
Project / Contract Manager	1	
Planning Engineer/Construction Engineer	1	
Construction Engineer	1	
Site Engineers	5	
Quality Control Manager	1	
Office/Bill Engineer	1	
Junior Engineer	10	
Sub Overseers	6	
Safety Manager / Senior Supervisor	1	
Accountant / Office Manager	1	
Lab Assistant	3	
Store Keeper	1	
Light Drivers	5	
Machine Operator	14	
Site Supervisor	1	
Other Supporting Staff	18	
Skilled Labour at Site	55	M:48; F:7
Unskilled Labour at Site	147	M:122; F:25

Contractor's Equipment:**Table 18: Contractor's Equipment:**

Equipment	No	Remarks
Back Hoe JCB	3	
Loader	3	
Excavator	3	
Excavator with Long Boom	1	
Plate Compactor	2	
Concrete Mixer	5	
Concrete Batching Plant	1	
Kerb Stone Machine	1	
Trailer	1	
Transit Mixer	2	
Water Bowser	3	
Steel Cutter	4	
Dumping Tractor	8	
Monkey Jumper	1	
Needle Vibrator	8	
Tipper	2	
Total Station	1	
Level Machine	6	
Jeep	5	
Motor Bike	10	

Contractor's Revised Cumulative Progress S-Curve

[illegible]

8 DETAILS OF SAFEGUARD ACTIVITIES (SOCIAL, ENVIRONMENTAL AND RESETTLEMENT ACTIVITIES AND ISSUES)

8.1 Social Issues

8.1.1 Operational Guidelines for Community Mobilization and Implementation of CDP

- **Visit, Interaction and Consultation with Community People**

37. Social Development Specialist (SDS) of DSC is closely monitoring the social issues that are consequent with the project activities. Visiting and interacting with people, Tole Lane Organisations (TLOs) and formal and informal consultation meetings are ongoing in this regard. In April, a consultation meeting with ward no. 18, Jatuwa people (30 April) is significant for mass consensus on the drain construction along the village up to WWTP. The meeting of PM/PIU, SDC/PIU, TL, CSE and SDS/DSC with community people has assured covered drain construction in the village. Field visit, observation and consultation meetings with community in R19 Janani Marga (11 April), meetings and consultation meeting at ward 11, 13 and 18 (13 April) are important to disseminate project message and monitor project features in the community. Monitoring visits with Project Manager (PM), TL/DSC and TL/CDP to the core project area, community development program area and construction sites have been beneficial to make insight the project progress, its effectiveness and challenges.

- **Functional Safeguard Desk**

38. A Safeguard Desk established in the project has been effective in planning, monitoring and follow up of all social development/ safeguard issues including of resettlement plan. It has been started a functional mechanism consisted with PIU, NGO and DSC for this purpose. The desk consist with Social Development Chief of PIU, Team Leader of CDP/ NGO and SDS of DSC with close consultation and guidance of PM/ PIU. It is in compliance with the Aide Memoire of last ADB Mission (21 April-12 May 2014). It is decided that the desk will review, update and discuss of progress, issues, constraints and challenges of social aspects, Community Development Program and implementation of resettlement plan as well as monitoring of social development activities.

In 3rd April 2015, a regular meeting of social safeguard desk has been organized. The meeting shared the training output of 'Gender Equality and Social Inclusion Action Plan (GESI AP) Training Workshop' which has been conducted by ADB in Kathmandu. The desk appraised the training outputs and consulted on 'Gender Sensitization Training' to municipal staffs, projects staffs and other stakeholders of STIUEIP Biratnagar. (Meeting Minute in Annex 6)

- **Road/Lane Improvement in Affected Community**

39. According to the decision made at the 5th meeting of Safeguard Desk on 9 March and observation visit and meeting with community people, four nos. road/lane improvement schemes has been approved through small facilities of community development program (CDP) in ward no. 18. The schemes are prioritized for the project affected community as indicated in resettlement plan (RP).

The facilities addressed the people's demand of that area which matches the community development criteria being facilitated and implemented by NGO. The facilities are being started after detail technical study, users committee (UC) formation and agreement between UC and CDP/ STIUEIP.

- **Gender and Social Inclusion (GESI) Sensitization Training**

40. The project has been envisaged a 'GESI Sensitization Training' for Biratnagar Sub Metropolitan City (BSMC) office and STIUEIP project staffs. The Aide Memoir Report of ADB Review Mission also has noted about the training to be conducted in Biratnagar for the staffs of municipality and related agencies. The Mission has recommended to conduct GESI training related to urban infrastructure development to staff of municipality, municipal steering committee, PIUs, local stakeholder agency and make them accountable for the results. In line with this, the project is going to conduct Gender and Social Inclusion (GESI) Sensitization Training within next month.

Safeguard desk members has been discussed on this agenda of such training and decided to conduct for the project and BSMC staffs. Social Development Specialist (SDS) of DSC has prepared a detail proposal for the training. The training arrangement will be decided just after the approval of this proposal by the project authority. Primarily it will be the 3 days training mainly focus on GESI sensitization comprised with other project elements. The participants will be from Biratnagar Sub Metropolitan City (BSMC) office and project staffs and will be about 30 nos.

- **Due Diligence Report**

41. Social Development Specialist (SDS)/ DSC finalized Due Diligence Report after incorporating input and feedback received from PCO/PMSC. The report formally submitted by DSC to the Project Implementation Office (PIU) in this month.

- **GESI AP Quarterly Update Report**

42. The regular quarterly update of project GESI AP is being continued. The latest update (Januray-March 2015) has been submitted within stipulated time to PIU by CDP/NGO with copy to SDS/DSC.

- **Skill Development Trainings**

43. Regarding on the skill development trainings for affected family members within project community; demand collections are in progress. Social mobilisers from CDP/NGO are mobilized for it. The training will be planned after analyzing the needs, demands and priority setting. It is already decided by safeguard desk to focus on the ward no. 18, Jatuwa community as most affected community of the project by WWTP.

- **Update of Small Facilities Construction and other Activities in CDP/STIUEIP**

44. The latest safeguard desk meeting has reviewed all ongoing and completed small facilities infrastructure and other activities implemented under Community Development Program (CDP) component of STIUEIP. It provided a common understanding and status information of such infrastructures and activities under CDP program to all safeguard desk members. Team leader of CDP/STIUEIP tabled the status information as;

- **Public Toilet: 8 nos.**
Completed: 2 nos
Construction in progress: 2 nos.
Proposal Approved: 2 nos.
In Pipeline: 2 nos.
- **Lane Improvement: 37 nos.**
Total Lane Improvement: 37 nos.
Near to complete: 2 nos.
Ongoing: 10 nos.
Agreement signed: 3 nos.

Proposal approved: 5 nos.
 Proposal submitted: 4 nos.
 Proposal prepared: 13 nos.

- **Household Toilets**

323 nos. completed
 47 nos. ongoing
 61 nos. agreements signed

- **CDP activities covered: 130 nos. Tole Lane Organizations (TLOs) in 17 wards**

- **Women Awareness Trainings**

Target: 20 nos (total target participants 20 nos. @35= 700 women)
 Completed: 19 nos. (Training obtained by 19 nos. @35= 665 women)
 Remain: 1 no.

- **Employment in Project**

45. The core activities of the project i.e. sewerage pipe laying, drain construction and road/ lane improvement has provided employment to more than 300 persons in a day. The employed human resources are varied from skilled engineer/ project manager to general labourer, supervisor, (sub) overseers and mechanics. However, very few women (16%) are working in the construction activities as skilled and unskilled labourer but they are paid equal to men for similar type of work. 3-4 women supervisors are also working at sites as an OJT (on the job trainee) from different CTEVT affiliated institutes of nearby districts. The contractor has been suggested to increase the work opportunity to women in different types of works.

SDS/DSC has been monitoring the labours working in the construction sites of the project

- **General**

46. Sewer/ Drainage lines are being carried primarily on public rights of way. During construction however, if there is any area affected namely trees or crops or structures demolished, it shall be properly addressed with compensation. Private individuals or shopkeepers will also be looked into if their livelihood is affected by the disturbance during constructions/ pipe laying works.

Apart from this, the project does not encounter any resettlement or re-location and any compensation issue in the month April 2015.

47. Latest Updated Semi-Annual Report of Resettlement and Social Aspect was submitted on 14 January 2015.

9 KEY ISSUES AND REMARKS / REASON FOR DEVIATION (IF ANY) AFFECTING PROGRESS

48. Following are the key issues affected in progress:

- Limited site possession and access to site within Right of Way (RoW)
- Unexpected rainfall at frequent interval has interrupted works, especially sewer works for deep trench excavation, laying of pipes and construction of manholes, sewer inlets and house connection chambers..
- Gorkha Earthquake of 7.6 Richter Magnitude Scale occurred at mid-day, 11:58 am on 25th April 2015. This devastating earthquake has hampered/disturbed human resources in the project. Many staffs are concerned with their home and properties and demobilized. But the critical activities are in progress despite the reduced/diminished workforce.
- A brick manhole as an alternative to RCC manholes is conditionally allowed to construct for depth more than 3.0m. The site situation compelled us to adopt this

practice to open traffic quickly, minimize the disturbances at junction points and to consider safety of road users and workers at vulnerable places etc.

- Shifting of electrical poles, transformers and telephone lines are in progress with very slow pace. This is one of the main causes which has directly impacted road works progress.
- The Employer/BSMC has decided to relocate the pipes for R2 road with Mangadh Water Supply Project only (about 1 km on both sides) and this is complete now. But, the other section from canal crossing to Panitanki, Nepal Water Supply Corporation and the Contractor has started to relocate and this may complete by 3rd week of May 2015.
- Localized disturbances at construction sites by local people for designed alignment and RoW Standards from BSMC.

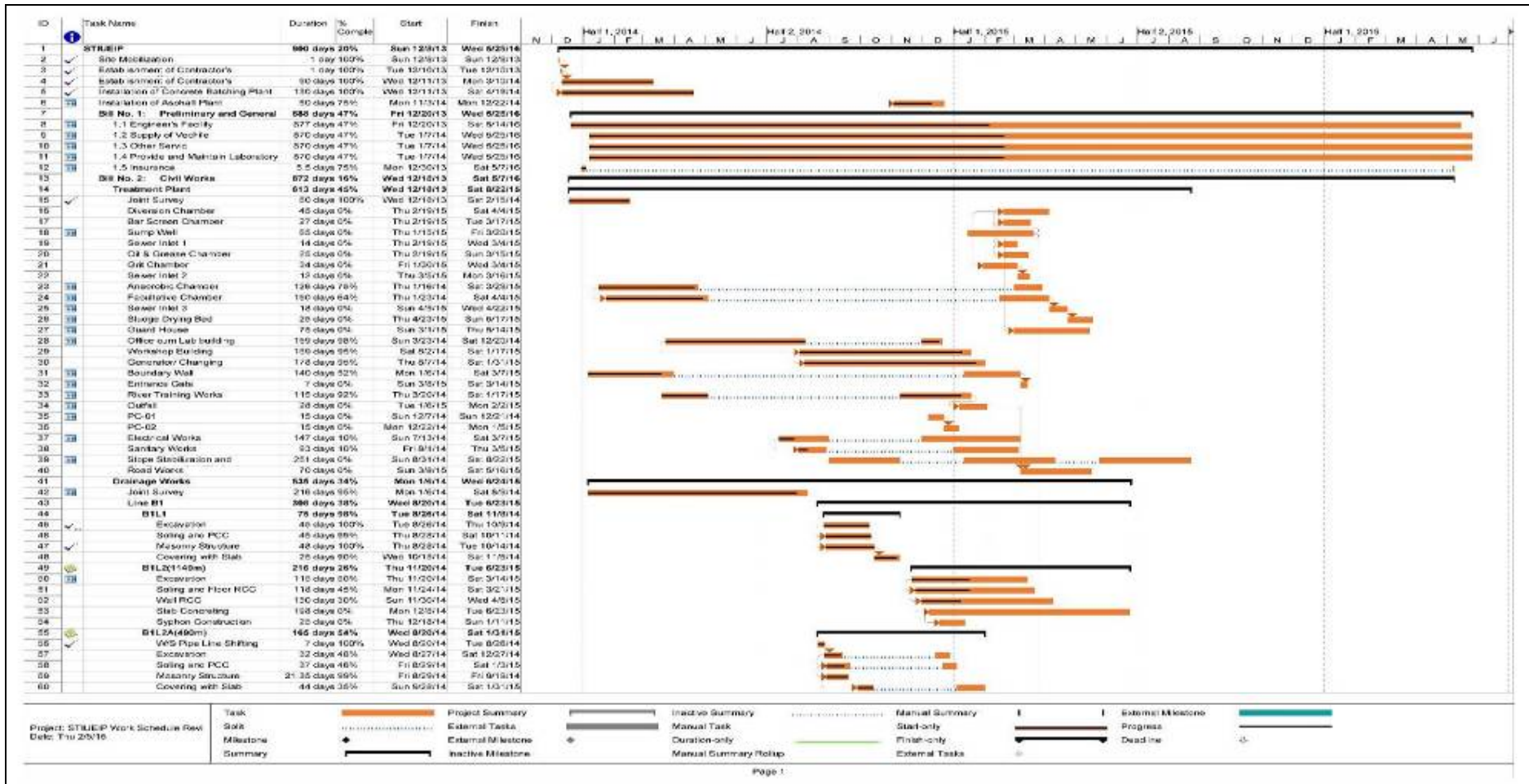
10 WORK PLAN FOR THE NEXT MONTH

49. Following are the Contractor's works in the next month **(Please refer to the contractor's progress report for quantitative plan works for next month):**

- Continuation of storm water drains- B1, B2, B3, CN2, CN3, S11, S13 at critical locations and sections.
- Continuation of sewer pipe lines T2 and T3 Trunk Line and Secondary Lines including manholes, sewer inlet chambers and house connecting chambers at critical sections.
- Production of precast RCC items (hume pipe, kerb stone, chamber, manhole, drain cover slab etc)
- Suitability tests and routine tests of construction materials at Lab and at site

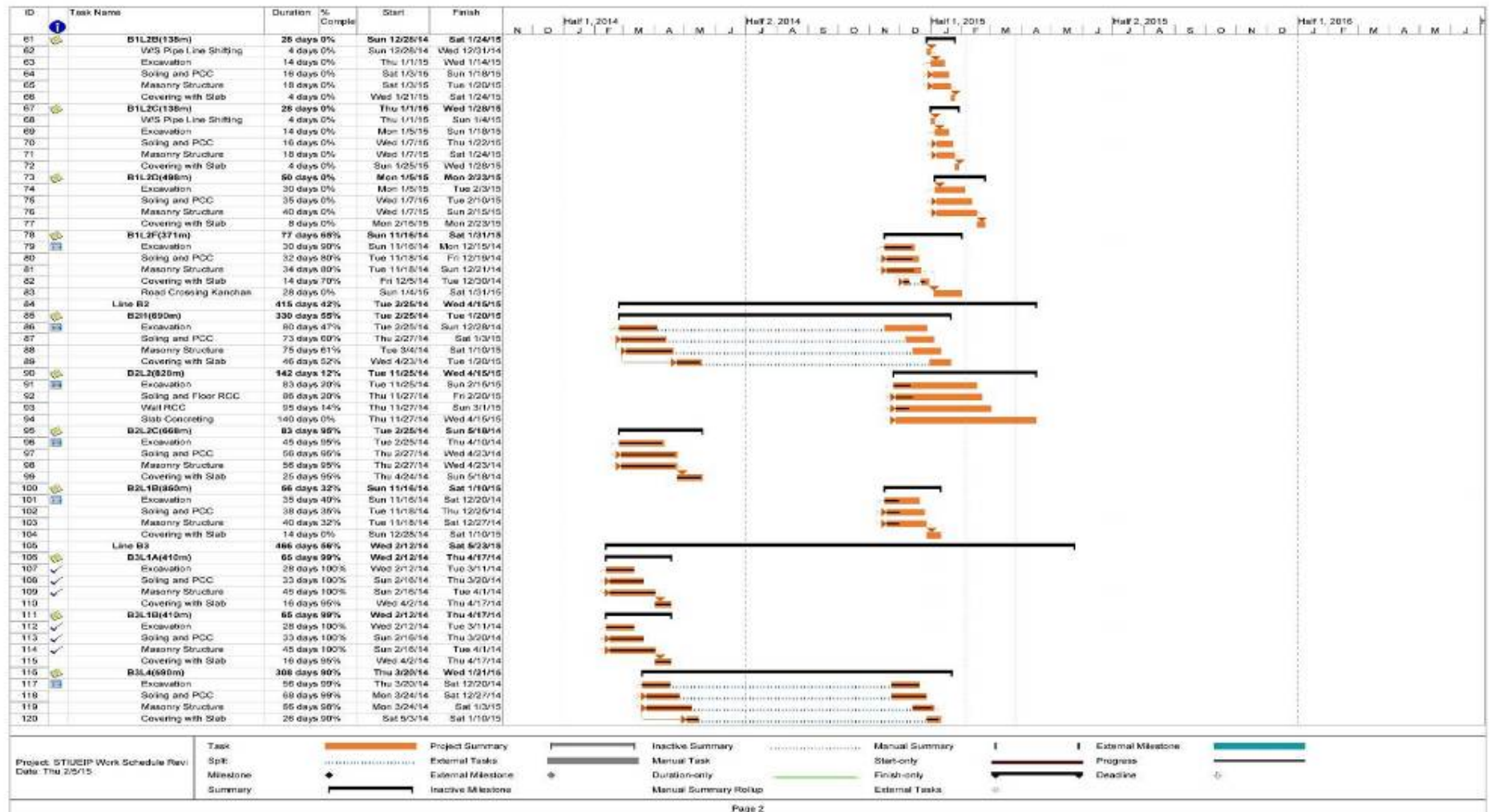
ANNEX-1: Work Schedule (Rev.02) (Under Review) and Progress

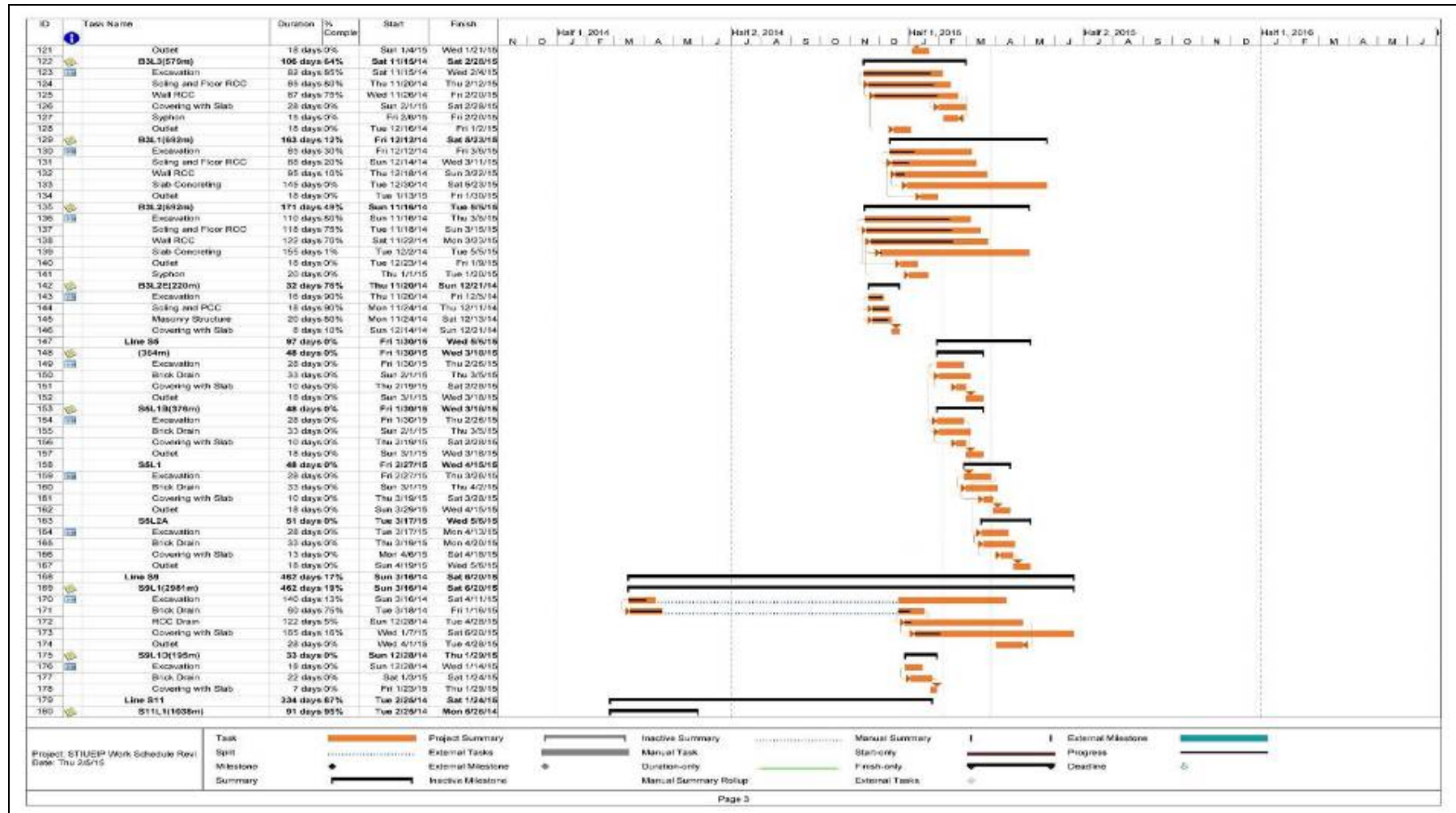
Note: Please refer to the contractor's progress report for details program.



Monthly Progress Report

April 2015





ANNEX2: PHOTOGRAPHS - MARCH 2015



Gravel bedding in preparation near outlet of B2, DPS School



Unloading Dia.1,600mm RCC pipes near road crossing of Storm drain S13 at R2 Road



Pre-cast units in progress at Contractor's yard, Judi Katahari



Storm Drain at Pawan Marg, Rani Area , A part of Southern Storm Water Drainage System



Storm Drain East side of Koshi Highway, Near Ram Mandir, Rani Area , A part of Southern Storm Water Drainage System



Dewatering and making ready for laying dia.1,600 mm RCC Pipe at S13 near R2 road crossing



Pre-cast manhole installed at site



HDPE pipe of dia 200mm laying for sewer line



Site visit by ADB Team with Country Director, Mr. Kenichi Yokoyama, 25 April 2015

ANNEX-3: FINANCIAL STATUS (DETAILS OF SUBMITTED INVOICES AND RECEIPT OF PAYMENTS WITH KEY DATES)

Invoice #	For Month	Invoice Amount including VAT		Received Amount		Remarks
Invoice 01	Advance	NRs. 9,866,160.40	USD 104,621.20	NRs. 9,866,160.40	USD 104,621.20	Received
Invoice 02	Inception Report	NRs. 1,947, 420.08	USD 52,721.00	Rs. 1,947, 420.08	USD 52,721.00	Received
Invoice 03	Jan +Feb, 2012-months Invoice	NRs. 2,387,262.11	USD 4, 243.15	NRs.2,329,310.81	USD 4, 243.15	Received
Invoice 04	March, 2012	NRs. 537,546.65	USD 2,276.95	NRs. 351,430.00	USD 2,276.95	Received
Invoice 05	April, 2012	NRs. 396,065.00		NPR 267,810.00		Received
Invoice 06	Vehicle Invoice	NRs. 8,000,000.00		NRs. 8,000,000.00		Received
Invoice 07	May- month Invoice	NRs. 502,324.55		NRs 250,860.00		Received
Invoice 08	June-month Invoice	NRs. 464,430.00		NRs 262,160.00		Received
Invoice09	Interim Report		USD 70,295.04		USD 70,295.04	Received

Invoice 10	Interim Report	NRs. 2,596,560.10		NRs 2,596,560.10		Received
Invoice 11	April-June,2012		USD 1,270.00		USD 1,270.00	Received
Invoice 12	July-month Invoice		USD 2,015.00		USD 2,015.00	Received
Invoice 13	Survey Invoice I	NRs. 2,166,775.00		NRs. 2,166,775.00		Received
Invoice 14	July-month Invoice	NRs. 669,751.00		NRs. 321,146.00		Received
Invoice 15	August month Invoice	NRs. 337,870.00	USD 0.00	NPR 314,140.00		Received
Invoice 16	September month Invoice	NRs. 328, 830.00	USD 3, 361.75	NRs. 314,140.00	USD 1,854.75	Received
Invoice 17	Survey Works Invoice II	NRs. 1,166,775.00		NRs. 1,166,775.00		Received
Invoice 18	Monthly Invoice Oct.12	NRs. 357,080.00	USD 2,895.00	NRs. 324,310.00	USD 2,895.00	Received
Invoice 19	Environmental Base line survey	NRs.144,634.35		NRs. 125,769.00		Received
Invoice 20	Monthly Invoice Nov.12	NRs. 331,090.00	US\$. 4,407.00	NRs. 324,310.00	USD. 4,407.00	Received
Invoice 21	Monthly Invoice-Dec.2012	NRs. 449,175.00	US\$ 1,909.70	Nrs. 350,865.00	USD 1,909.70	Received
Invoice 22	Draft Report Invoice	NRs. 5,193,120.21	US\$140,590.08	NRs. 5,193,120.21	USD 91,587.31	Received

Invoice 23	Geotechnical Investigation Invoice	NRs. 191,741.23		NRs.166,731.00		Received
Invoice 24	Vehicle hard top Invoice	NRs. 707,125.70		NRs. 707,125.70		Received
Invoice 25	Monthly Invoice Jan13	NRs. 410,868.00	USD 4,327.90	NRs. 380,923.00	USD 3103.40	Received
Invoice 26	Monthly Invoice Feb13	NRs.324,310.00	USD 3,051.00	NRs.324,310.00	USD 2,203.50	Received
Invoice 27	Monthly Invoice Mar 13	NRs. 404,467.68	USD 4553.90	NRs. 361,600.00	USD 4553.90	Received
Invoice 28	Final Report Invoice	NRs. 3,245,700.13	USD 87,868.80	NRs. 3,245,700.13	USD 85,350.48	Received
Invoice 29	Monthly Invoice April 13	NRs. 340,695.00	USD 1,322.10	NRs. 324,310.00	USD 881.40	Received
Invoice 30	Monthly Invoice May 13	NRs. 671,951.00	USD 4,4435.25	NRs. 576,700.02	USD 4,4435.25	Received
Invoice 31	Monthly Invoice June 13	NRs. 1,107,583.06	USD 2,203.50	NRs.448,376.81	USD 2,203.50	Received
Invoice 32	Additional Survey	NRs. 1,050,052.00				Not received
Invoice 33	Monthly Invoice July 13	NRs. 589,490.49	USD 1,542.45	NRs 481,693.01	USD 1,101.75	Received
Invoice 34	Monthly Invoice August 13	NRs. 701,094.94	USD 00.00	NRs 629,499.89	USD 0.00	Received

Invoice 35	Monthly Invoice Sept. 13	NRs. 424,773.78	USD 00.00	NRs 424,772.45	USD 0.00	Received
Invoice 36	Monthly Invoice Oct. 13	NRs. 458,661.35	USD 00.00	NRs 408,710.78	USD 0.00	Received
Invoice 37	Monthly Invoice Nov. 13	NRs. 450,085.78	USD 0.00	NRs 431,600.15	USD 0.00	Received
Invoice 38	Monthly Invoice Dec. 13	NRs. 501,084.94	USD 00.00	NRs 481,693.01	USD 0.00	Received
Invoice 39	Monthly Invoice Jan. 2014	NRs. 695,501.44	USD 00.00	NRs. 609,960.44	USD 0.00	Received
Invoice 40	Monthly Invoice Feb. 2014	NRs. 613,180.94	USD 00.00	NRs. 613,180.94	USD 0.00	Received
Invoice 41	Monthly Invoice Mar. 2014	NRs.1,308,022.46	USD 00.00	NRs. 599,281.94	USD 0.00	Received
Invoice 42	Monthly Invoice Apr. 2014	NRs. 861,039.32	USD 00.00	NRs. 716,817.76	USD 0.00	Received
Invoice 42	Geotechnical Inv. II	NRs. 549,989.85	USD 00.00	NRs. 546,232.96	USD 0.00	Received
Invoice 43	Monthly Invoice May 2014	NRs. 1,170,291.64	USD 00.00	NRs. 965,435.84	USD 0.00	Received
Invoice 44	Monthly Invoice June 2014	NRs.1,163,214.09	USD19,313.42	NRs. 950,892.74	USD 0.00	Received
Invoice 45	Monthly Invoice July 2014	NRs. 854,199.00	USD18,465.92	NRs. 719,321.84	USD 0.00	Received

Invoice 46	Monthly Invoice August 2014	NRs 865,951.00	USD 0.00	NRs.726,553.84	USD 0.00	Received
Invoice 47	Monthly Invoice September 2014	NRs 777,343.07	USD 0.00	NRs 584,568.89	USD 0.00	Received
Invoice 48	Monthly Invoice October 2014	NRs 841,778.13	USD 0.00	NRs 657,106.30	USD 0.00	Received
Invoice 49	Monthly Invoice November 2014	NRs 1,306,536.89	USD 0.00	NRs 768,654.25	USD 0.00	Received
Invoice 50	Monthly Invoice December 2014	NRs 1,348,791.74	USD 0.00	NRs 987,178.63	USD 0.00	Received
Invoice 51	Monthly Invoice Jan 2015	NRs 1,255,351.08	USD 0.00	NRs 988,789.39	USD 0.00	Received

ANNEX-4: STATUS OF ACTIONS AGREED WITH PREVIOUS ADB LOAN REVIEW MISSION

S. No.	Agreed Items in ADB Review Mission with DSC on 2-4 December 2014	Status	Responsibility
1	Updated Semi-Annual Resettlement and Social Aspect Report	Report Submitted on 14 January 2015	DSC/PMSC
2	DSC will review its construction supervision plan (including international experts inputs) against the contractors approved scheduled and submit it to PIU.	Draft Plan submitted	DSC
3	Submission of implementation status of EMP to ADB in quarterly basis	Report Submitted till December, 2014	DSC/PMSC

ANNEX-5: PROFESSIONAL INPUT AS PER CONTRACT VS INPUT USED TILL THIS REPORTING PERIOD

S.No.	Expert / Position	Total man months Input (as per agreement)			Man months Used in 2012/013/014/2015			Balance
A	Professional Staff	Design	Construction	Total	Up to Mar. 2015	April. 2015	Total	

S.No.	Expert / Position	Total man months Input (as per agreement)			Man months Used in 2012/013/014/2015			Balance
					Up to Mar. 2015	April. 2015	Total	
A1	International Professional Staff							
1	Sewerage and Drainage Engineer	8	4	12	7.37	0.00	7.37	4.63
2	Sewage Treatment Specialist (1 day at May, 2014)	5	4	9	6.01	0.00	6.01	2.99
3	PPP Specialist	2		2	2.00	0.00	2.0	0.00
A2	Domestic Professional Staff				Up to Mar.2015	April 2015	Total	Balance
4	Team Leader/ S-D Engineer	12	24	36	28.23	1.00	29.23	7.77
5	Sewage Treatment Specialist	8	18	26	10.50	0.50	11.0	15.00
6	Procurement Specialist	5	2	7	8.75	0.00	8.75	(1.75)
7	DTL/ Quantity Surveyor	9		9	10.00	0.00	10.0	(1.00)
8	Urban Planner	4	2	6	5.00	0.00	5.0	1.00

S.No.	Expert / Position	Total man months Input (as per agreement)			Man months Used in 2012/013/014/2015			Balance
9	Financial Expert	5		5	6.00	0.00	6.0	(1.00)
10	Institutional Development Specialist	2	3	5	2.00	0.00	2.0	3.00
11	PPP Specialist	3		3	3.00	0.00	3.0	0.00
12	Roads Specialist	4	8	12	6.45	0.55	7.00	4.00
13	Civil and Structural Specialist	6	2	8	7.95	0.00	7.95	0.05
14	Electrical Engineer	3	1	4	3.50	0.00	3.50	0.50
15	Mechanical Engineer	3	1	4	3.90	0.00	3.90	0.10
16	Construction Management Specialist		10	10	0.83	0.00	0.83	9.17
17	Environmental Specialist	8	12	20	11.20	2.89	14.09	5.91
18	Social Development Specialist	8	15	23	17.00	1.00	18.00	5.00
19	Construction Supervision Engineer		30	30	15.00	1.00	16.00	14.00
20	Asst. Construction S Engineer- 1		30	30	9.50	1.00	10.50	19.50
	Asst. Construction S Engineer- 2		30	30	11.70	1.00	12.70	17.30

S.No.	Expert / Position	Total man months Input (as per agreement)			Man months Used in 2012/013/014/2015			Balance
21	Senior Statistician	4		4	4.00	0.00	4.00	0.00
22	Geologist	1		1	1.00	0.00	1.00	0.00
23	Biologist	1		1	1.00	0.00	1.00	0.00
24	Geo-technical Engineer	1		1	2.40	0.00	2.40	(1.40)
25	GIS Expert	2		2	4.00	0.00	4.00	(2.00)
26	Senior Surveyor	2		2	2.00	0.00	2.00	0.00
	Network Modular				8.00	0.00	8.00	(8.00)
	Hydrologist				4.00	0.00	4.00	(4.00)
A-3	Support Staff							
27	Junior Engineer-1			49	39.00	1.00	40.00	9.00
	Junior Engineer-2			49	39.00	1.00	40.00	9.00
	Junior Engineer-3			24	6.00	1.00	7.00	17.00
	Junior Engineer-4			49	2.33	1.00	3.33	47.67

S.No.	Expert / Position	Total man months Input (as per agreement)			Man months Used in 2012/013/014/2015			Balance
	Junior Engineer-5			49		0.70	0.70	49.30
	CAD Operators			20	0.00	0.00	0.00	20.00
28	Accountant / Office Manager			49	39.00	1.00	40.00	9.00
29	Secretary / Computer Operator			49	37.75	1.00	38.25	10.25
30	Driver-1			49	32.27	1.00	33.27	15.73
	Driver-2			49	31.10	1.00	32.10	16.90
30	Office Assistant			49	38.50	1.00	39.50	9.50

ANNEX-6: MINUTES OF MEETING – APRIL 2015

List of Minutes of Meeting

1. Minutes of Meeting No 6- Safeguard Desk, 3 April 2015
2. Minutes of Meeting No 07- Progress Meeting , 7 April 2015

Secondary Towns Integrated Urban Environmental Improvement Project (STIUEIP), Biratnagar

MEETING NOTES

Sewerage and Drainage Network, Wastewater Treatment Plant, and Roads and Lanes Improvement Subproject

(Contract # STIUEIP/W/BRT/ICB-01)

Meeting held: Date : 07 April 2015
Time : 12:10 PM
Venue : BSMC, CEO's Office ,Biratnagar

Subject : Progress Meeting No 06

Client BSMC , STIUEIP , Government of Nepal

Present

1. Mr. Gopal Prasad Regmi, Chief & Executive Officer (CEO), BSMC
2. Mr. Upendra Prasad Baral, Project Manager (PM), STIUEIP, PIU
3. Mr. Bharat Neupane, Deputy Project Manager(DPM), STIUEIP, PIU
4. Mr. Anil Singh, Project Engineer(PE), STIUEIP, PIU
5. Mr. Prakash Chaudhari, Project Engineer(PE), STIUEIP, PIU
6. Mr. Mohan Kumar Tuladhar, Team Leader, Consultant
7. Mr. Dil Bahadur Rana, Construction Supervision Engineer (CSE), Consultant
8. Mr. Ujjwal Prasai, Project Manager, CTCE- Kalika JV, Contractor

	ACTION by
<p>The meeting was chaired by Mr. Gopal Prasad Regmi, CEO.</p> <p>The meeting was open by Mr. Upendra Prasad Baral, PM.</p> <p>Mr. Baral expressed his concern regarding the followings</p> <ol style="list-style-type: none"> 1. Slow work progress of overall work activities- sewer line, storm drainage works and boundary wall of WWTP 2. Complete and tidy up site before monsoon- provide access to the road users/ bring the road surface to the serviceable condition before monsoon 3. Quality works of current activities of storm drainage 4. Complete syphons and link the both ends so that the whole drain will be functional up to the complete outfalls 5. Site clearance within RoW not completed at certain part to provide continuity of storm drains and major area of sewer lines are still need to be addressed by BSMC for access to site within RoW 6. Pick up jeep – Single cab Vs Double cab, BSMC prefers to have double cab pick up 7. Completion of boundary walls and Bio-engineering works along bank of Singhiya River at WWTP and plantation within the compound wall of WWTP in this season. 8. Relocation of water supply pipes at R2 road(Pushpalal Chowk to Panitanki) 9. Completion of S13 including problematic area at downstream(d/s) side of R2 road- even with RCC or any other appropriate solution <p>Mr. Regmi,CEO also expressed his serious concern to the Contractor to complete the sewer lines currently in progress with roads serviceable to the local people and other road users.</p> <p>The BSMC asked the contractor to provide double cab pickup for the single cab provisioned in the contract.</p> <p>Mr. Regmi also asked his team to continue clearing within RoW at various locations including Rani Area within a week from 27 Chaitra 2071 (10 April 2015).</p>	<p>Contractor/ Consultant</p> <p>Contractor/ Consultant Employer/</p> <p>Contractor/ Consultant</p> <p>Consultant/ Contractor</p> <p>Employer</p>

Mr. Ujjwal addressed all the above serious concern that will be completed within 10days from today. Mr. Ujjwal also expressed his willingness to provide the double cab pick-up.	Contractor
The Consultant will confirm the production of dia 1,600mm pipes from Hume Pipe Factory at Itahari. The consultant will closely monitor the tidy up activities of the contractor for the agreed time period of 10days, 7-16 April, 2015.	Consultant
Distribution: To the Client, Contractor and Consultant	

The meeting was closed at 2:15 PM.

M. K. Tadi *MB* *CS* *QMP*
B. K. Singh

Meeting of Safeguard Desk**Venue:** Project Implementation Unit (PIU)/ STIUEIP, Biratnagar**Date:** 3 April 2015**Time:** 11:00-12:30**Attended:**

Upendra Prasad Baral- Project Manager/ STIUEIP, Biratnagar

Punam Kumar Dahal- Chief, Social Development/ PIU, STIUEIP Biratnagar

Noor Jang Thapa- Team Leader/ CDP, STIUEIP (NGO)

Bala Ram Mayalu- Social Development Specialist/ DSC, STIUEIP

Meeting Agenda:

1. Sharing of Gender Equality and Social Inclusion Action Plan (GESI AP) Training Workshop
2. GESIAP quarterly update report
3. GESI training proposal for BSMC and project staffs
4. Skill development trainings
5. Cemetery construction as an action of Resettlement Plan
6. Update of small facilities construction and other activities in CDP/STIUEIP
7. Drain cover
8. Due Diligence Report

Discussion and Decisions

S. No.	Agenda	Discussions and Decisions	Action/ Responsible Persons, Organizations
1.	Sharing of Gender Equality and Social Inclusion Action Plan (GESI AP) Training Workshop	<p>The 6th regular meeting of Safeguard Desk/ STIUEIP Biratnagar started with general sharing of GESI AP training workshop held at Kathmandu on 25-26 March 2015. Mr. Bala Ram Mayalu, Social Development Specialist of DSC and Mr. Punam Dahal, Social Development Chief of PIU have participated in the training workshop. It was a two-day residential training workshop on GESI AP implementation, monitoring and reporting for the ADB assisted projects in Nepal. The training venue was Park Village Resort, Budhanilkantha, Kathmandu.</p> <p>The objectives of the workshop are to:</p> <ol style="list-style-type: none"> a) enhance technical capacity to effectively implement and monitor GESI Action Plans (GESI APs) and report on GESI results; b) enhance capacity for GESI institutionalization within respective sectors/projects; c) increase capacity on designing and delivering GESI training at different levels; and d) enhance capacity on producing good practice case studies <p>SDS/ DSC and SDC/PIU actively participated in the training/ workshop. They presented the status of project GESI AP at the workshop and shared the learning and working approach as well.</p> <p>The meeting thanked to the ADB for providing such opportunity and expects its fruitfulness in efficient and effective implementation of the program in STIUEIP Biratnagar.</p>	
2.	GESI AP quarterly	The regular quarterly update of project GESI AP is being continued. The meeting expressed its consciousness that the periodic update report is	TL/CDP SDS/DSC

	update report	submitting to PIU up to 10 th of each quarterly month. Team Leader of CDP is preparing GESI AP update and submitting report within stipulated time to PIU with copy to SDS/DSC.	
3.	GESI training proposal for BSMC and project staffs	<p>As all the members of Safeguard Desk/STIUEIP is aware on the training of 'Gender Equality and Social Inclusion (GESI) Sensitization' to BSMC and project staffs. This type of training has been envisaged by the project too.</p> <p>This meeting agreed to conduct such training in near future. It will be 3 days training mainly focus on GESI sensitization and comprised with other project elements as well. The participants will be from Biratnagar Sub Metropolitan City (BSMC) office and project staffs and will be about 30 nos. Mr. BR Mayalu; SDS/DSC will prepare a brief proposal and forward to PIU. After review and input in the proposal, the training will be decided and arranged accordingly.</p>	<p>SDS/DSC: Proposal with rationale, objectives, contents, HR and budget breakdown PIU/TL, CDP: Review and input PIU: Approval, budget release PIU/DSC: Arrangement and Carry out</p>
4.	Skill development trainings	TL/ CDP and SDC/PIU shared the status of skill development trainings. Demand collections are in progress and social mobilisers are mobilized for it. After collecting demands, a meeting will be called. The meeting will review and plan the trainings as needed.	SDC PIU/ TL CDP: Call meeting after the demand collection process complete
5.	Cemetery construction as an action of Resettlement Plan	<p>The safeguard desk is aware on the implementation action of resettlement plan. Construction of a cemetery place has been included in the project resettlement plan of STIUEIP Biratnagar.</p> <p>Taking consideration of location of site initially said by local people; it was decided in first Safeguard Desk meeting that it is appropriate to recommend for include in contract work within the project contract. But now, the people of Jatuwa, the affected community due to Waste Water Treatment Plant (WWTP) were searching the next appropriate land nearby WWTP to construct such place as informed by them in previous meetings. It is reported by SDC/ PIU in the meeting that the people have informally identified a land of 10 kattha about 1 km far from WWTP. So, this meeting decided to observe the land which people have searched prior to decide further action.</p>	<p>PIU: Arrange an observation visit with PM and all concerned officials</p> <p>SDS/ DSC, TL/CDP: Join the visit and provide suggestions/ input</p>
6.	Update of small facilities construction and other activities in CDP/STIUEIP	<p>The meeting reviewed all ongoing and completed small facilities infrastructure and other activities implemented under Community Development Program (CDP) component of STIUEIP. It provided a common understanding and status information of such infrastructures and activities under CDP program to all safeguard desk members. Team leader of CDP/STIUEIP tabled the status information as;</p> <p>Public Toilet</p> <ul style="list-style-type: none"> Completed <ol style="list-style-type: none"> 1. Rehabilitation of Public Toilet, Compound Wall and Shed construction at Hartali Hat, Rani 2. Public Toilet near CDO office Construction in progress <ol style="list-style-type: none"> 3. Public Toilet at Hatkhola: Construction in progress 4. Public Toilet at Bishnumaya Pustakalaya, Ward no. 1: 	

		<p>Construction in progress</p> <ul style="list-style-type: none"> • Proposal Approved <ol style="list-style-type: none"> 5. Public Toilet At Puspala Chowk 6. Public Toilet at Koshi Zonal Hospital • In Pipeline <ol style="list-style-type: none"> 7. Public Toilet at C Block Gudri 8. Public Toilet at Rani Thana <p><u>Lane Improvement</u></p> <ul style="list-style-type: none"> • Near to Completion (Final stage) <ol style="list-style-type: none"> 1. Kolhar Tole, Ward 20 2. Balgopal Tole, Ward 11 • Ongoing <ol style="list-style-type: none"> 3. Biswakarma 'kha' Tole, Ward 11 4. Chauthi Tole, Ward 20 5. Hansamukhi Tole, Ward 18 6. Biswakarma 'kha', Mahesh Yadav north Tole, Ward 11 7. Biswakarma 'kha', Manoj Thakur Tole, Ward 11 8. Prati Tole, Ward 11 9. Swagatam Tole, Ward 11 10. Shiva Baba Tole, Ward 18 11. ShivaMarga Tole, Ward 17 12. Shiva Sarswoti Marga Tole, Ward 17 • Agreement Signed <ol style="list-style-type: none"> 13. Malhanuwa Rajbanshi Tole, Ward 16 14. Milan Tole, Ward 20 • Proposal Approved <ol style="list-style-type: none"> 15. Bijayapur North Tole, Ward 1 16. Bijayapur South Tole, Ward 1 17. Chaudhary Tole, Ward 20 18. Indranagar Tole, Ward 20 19. Shivalaya Marga Tole, Ward 5 20. Surya Marga Tole, Ward 6 • Proposal Submitted <ol style="list-style-type: none"> 21. Ayurvedik Marga Tole, Ward 5 22. Kirateswor Marga Tole, Ward 23. Kunti Marga, Ward 5 24. Shruti Marga, Ward 6 • Proposal Prepared <ol style="list-style-type: none"> 25. Bank Road Tole, Ward 19 26. Dariya Marga Tole, Ward 16 27. Kolharuwa Tole, Ward 6 28. Adarsha Tole, Ward 11 29. Sarswoti Tole 'ka', Ward 18 30. Sarswoti Tole 'kha', Ward 18 31. Sarswoti Tole 'ga', Ward 18 32. DharmaBandh Tole, Ward 18 33. Gudri Tole, Ward 22 34. Gaffur Tole, Ward 22 35. Raja Birat Road Tole, Ward 22 36. Baluwai Rajbanshi Tole, Ward 11 37. Biswakarma 'ka' Tole, Ward 11 	
--	--	---	--






		<ul style="list-style-type: none"> ○ Total Lane Improvement: 37 nos. ○ Near to complete: 2 nos. ○ Ongoing: 10 nos. ○ Agreement signed: 3 nos. ○ Proposal approved: 5 nos. ○ Proposal submitted: 4 nos. ○ Proposal prepared: 13 nos. <p><u>Household Toilets</u> 323 nos. completed 47 nos. ongoing 61 nos. agreement signed</p> <p><u>CDP activities covered:</u> 130 nos. Tole Lane Organizations (TLOs) Ward no. 1 : 7 TLOs Ward no. 2: 3 TLOs Ward no. 5: 12 TLOs Ward no. 6: 14 TLOs Ward no. 10: 1 TLO Ward no. 11: 10 TLOs Ward no. 13: 3 TLOs Ward no. 15: 3 TLOs Ward no. 16: 10 TLOs Ward no. 17: 3 TLOs Ward no. 18: 12 TLOs Ward no. 19: 15 TLOs Ward no. 20: 13 TLOs Ward no. 21: 10 TLOs Ward no. 22: 14 TLOs</p> <p><u>Women Awareness Trainings</u> Target: 20 nos (total target participants 20 nos. @35= 700 women) Completed: 18 nos. (Training obtained by 18 nos. @35= 630 women) Remain: 2 nos. (one in Ward 18 and other in Ward 20 Mushahari)</p>	
7.	Drain cover	Project Manager (PM)/ PIU informed the meeting that some communities have demanded covered drain in the CDP assisted lane/road improvement schemes. The meeting discussed on the issue and appraised the consequences of such demands. Due to high technical matter the issue is kept for further discussion and analysis it's pro and con.	
8.	Due Diligence Report	SDS/DSC informed about the Due Diligence Report of the project. The Report has been prepared on February and circulated to concerned stakeholders for discussions and consultations through PIU. Few input and feedback from PCO/PMSC has been received and now final report is prepared after incorporating such input and feedback. Social Development Specialist/ DSC informed the meeting that he is submitting the final version of Due Diligence Report to PIU/STIUEIP Biratnagar by today or tomorrow.	

ANNEX-7: LABORATORY TEST RESULTS OF APRIL 2015

ANNEX-8: CONTRACTOR'S PROGRESS REPORT- APRIL 2015